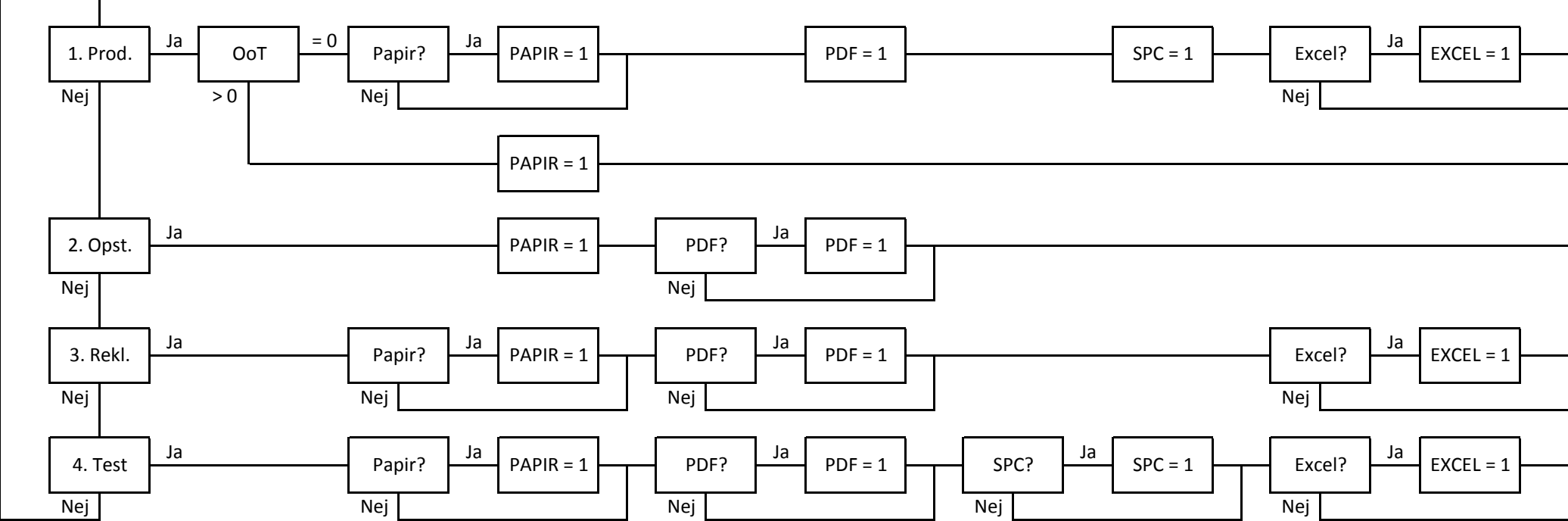


PAPIR = 0
 PDF = 0
 SPC = 0
 EXCEL = 0

Flow for PRINT, PDF & SPC.



```

  ASSIGN/PRINTING = Papir + (PDF*10)
  IF PRINTING == 1
    Print to paper
  END_IF
  IF PRINTING == 10
    Print to PDF
  END_IF
  IF PRINTING == 11
    Print to paper and to PDF
  END_IF
  
```

UDFØR
EXECUTE