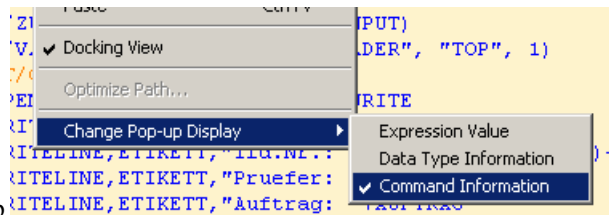


Values of Part-Header in Variables

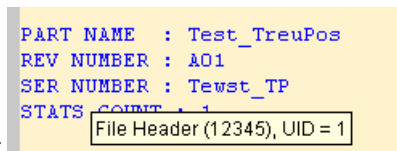
A short option to get the 4 values of the Part-Header into VAR's is the following code:

```
ASSIGN/PART = STR(GETTEXT(191, 1, {FILEHEDR}))
ASSIGN/REVI = STR(GETTEXT(192, 1, {FILEHEDR}))
ASSIGN/SERI = STR(GETTEXT(193, 1, {FILEHEDR}))
ASSIGN/STAT = STR(GETTEXT(194, 1, {FILEHEDR}))
```

How i found the FILEHEDR

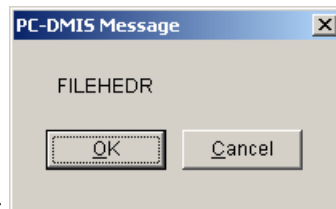


Switch to command information popup



Place mouse over the header

```
ASSIGN/VAR1 = GETCOMMAND("FILE HEADER", "TOP", 1)
COMMENT/OPER,NO,VAR1
```



will lead you to the following dialog: