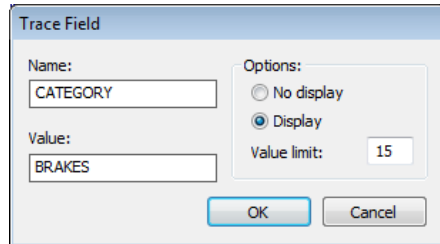


Import Directly to WebReporter Part Category from PC-DMIS



Trace Field

Name: CATEGORY

Options:

No display

Display

Value limit: 15

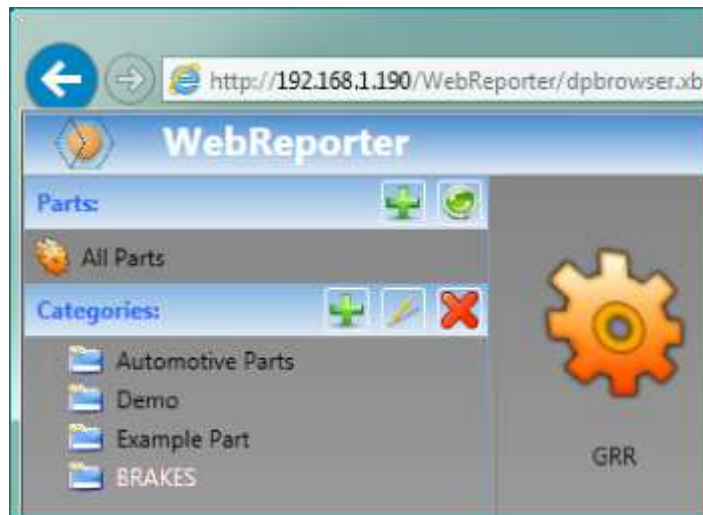
Value: BRAKES

OK Cancel

Allow your operators to view their parts automatically without having the WebReporter Administrator move them to the operator category.

```
EXTERNALCOMMAND/NO_DISPLAY, WAIT ;  
ASSIGN/PART_NUMBER=GETTEXT(191,0,"FILEHDR")  
TRACEFIELD/DISPLAY,LIMIT=15 ; CATEGORY : BRAKES  
ASSIGN/PART_REVISION=GETTEXT(192,0,"FILEHDR")  
ASSIGN/PART_OPERATION=GETTEXT(193,0,"FILEHDR")  
ASSIGN/PART_TIMESTAMP=CONCAT(SYSTEMDATE("yyMMdd"), "_", SYSTEMDATE("yyMMdd"))
```

In your PC-DMIS part program, add the tracefield, "CATEGORY", then enter the category name as the value.



When the part program completes, the part data will be added to that part category in WebReporter automatically.