

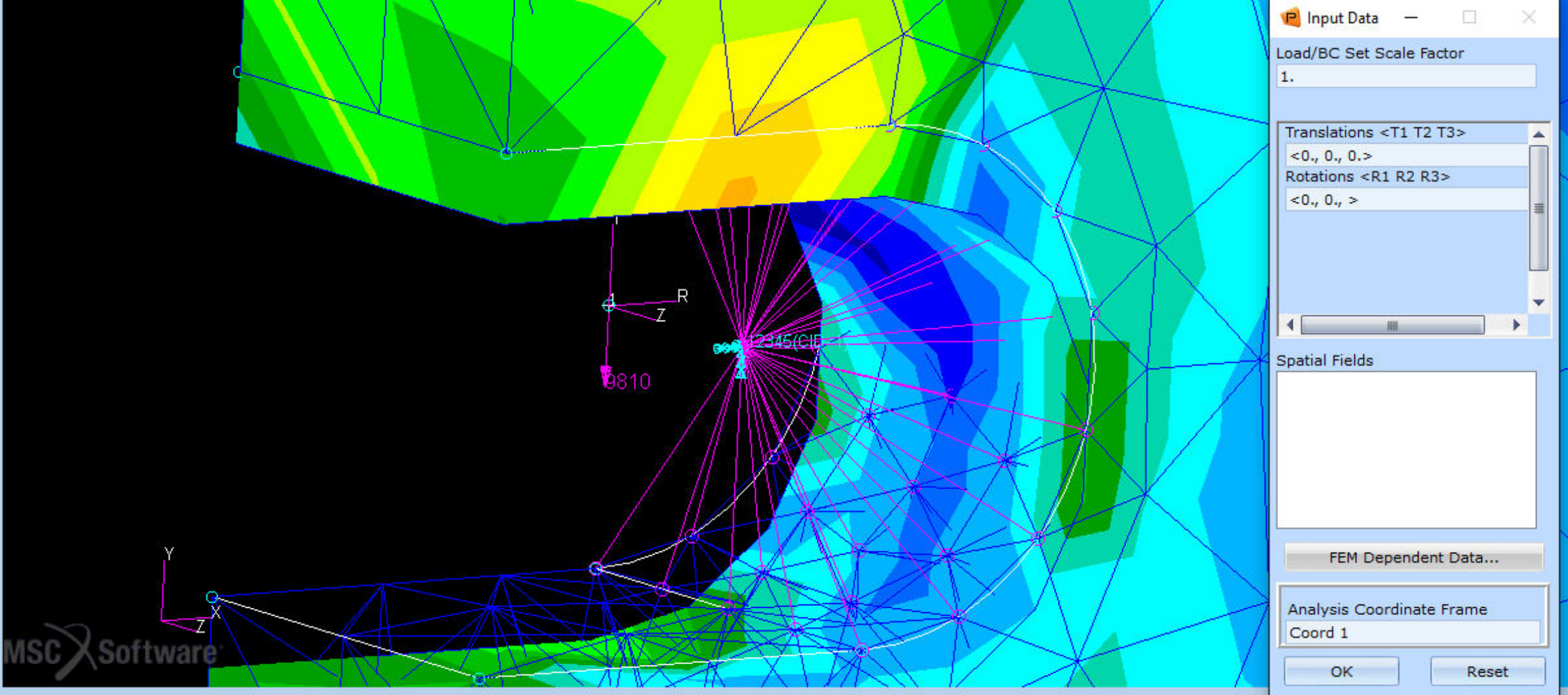
Test 1a:

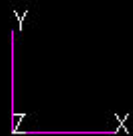
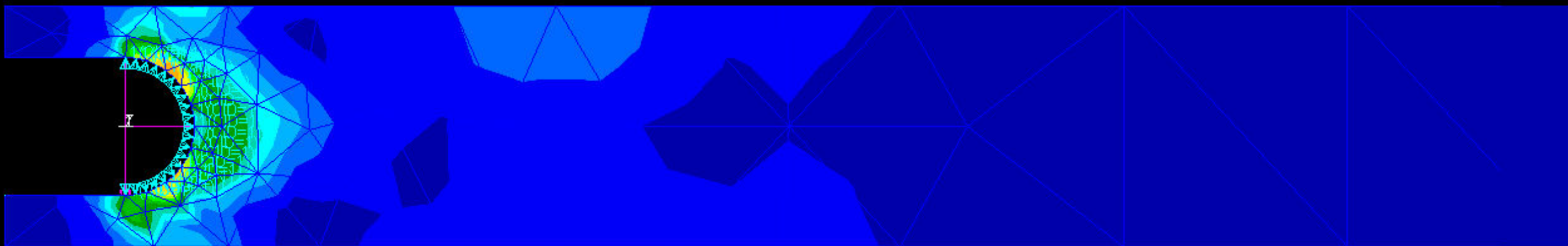
- MPC "RBE2": all DOFs of all dependent nodes constrained
- independent node constrained by displacement in 12345 in Euler cylindrical Coord
- Result: Free Fall

Test 1b:

- MPC "RBE2": all DOFs of all dependent nodes constrained
- independent node constrained by displacement in 12345 in global Coord
- Result: Free Fall

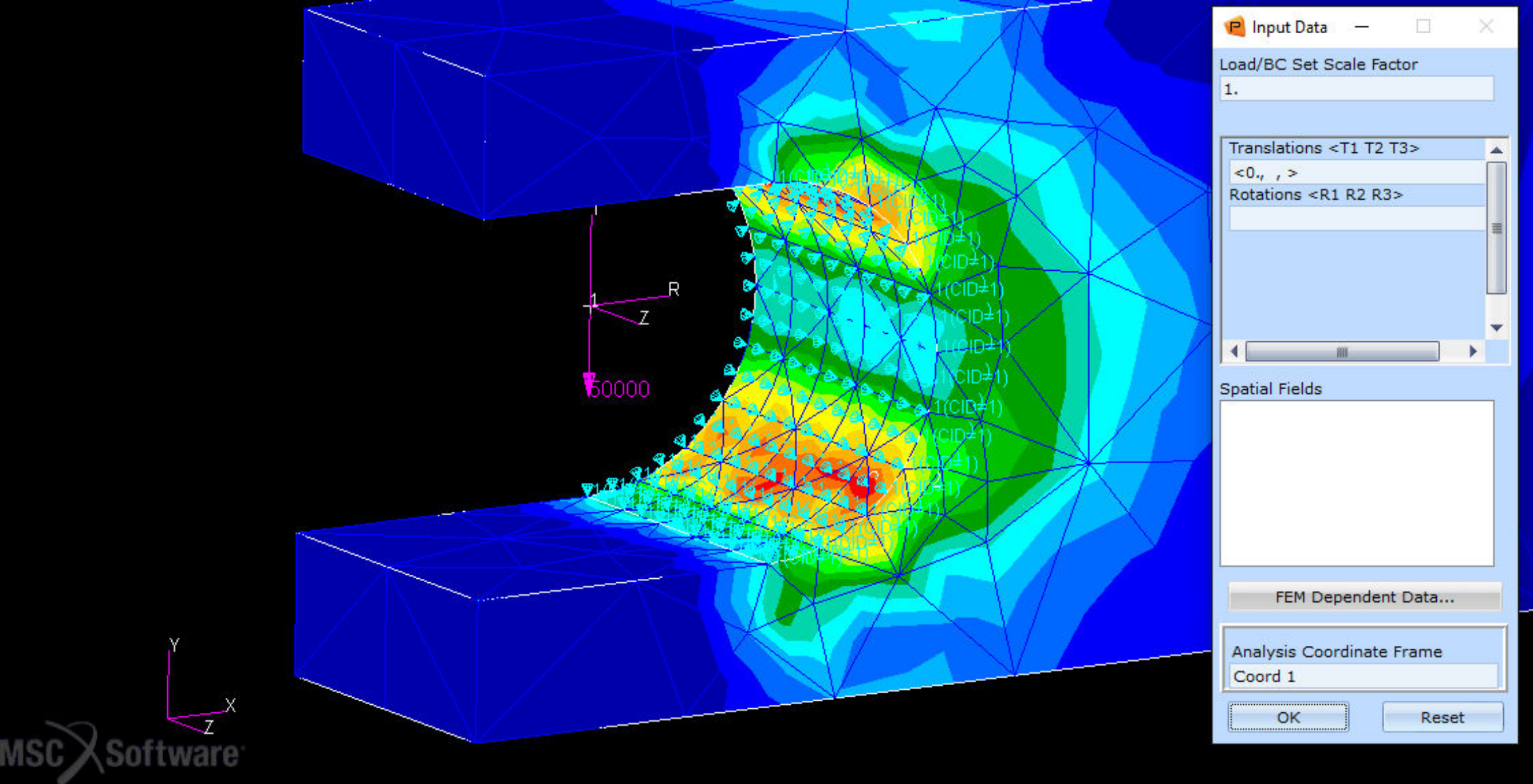


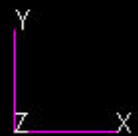
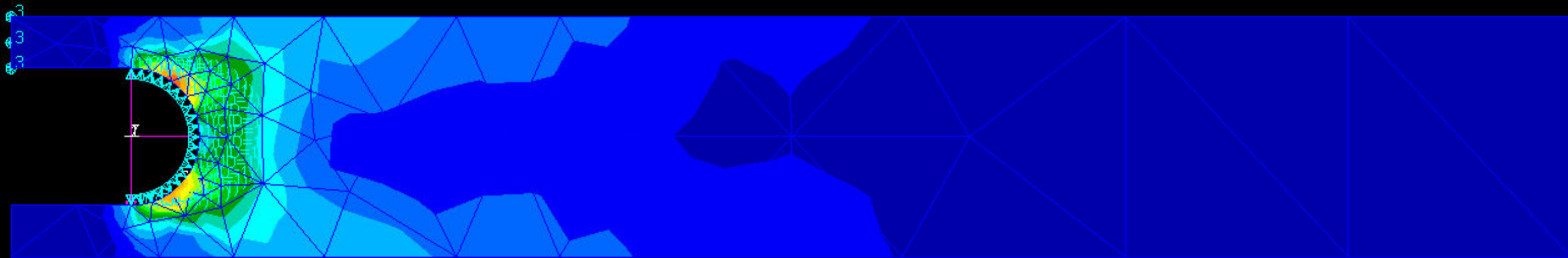




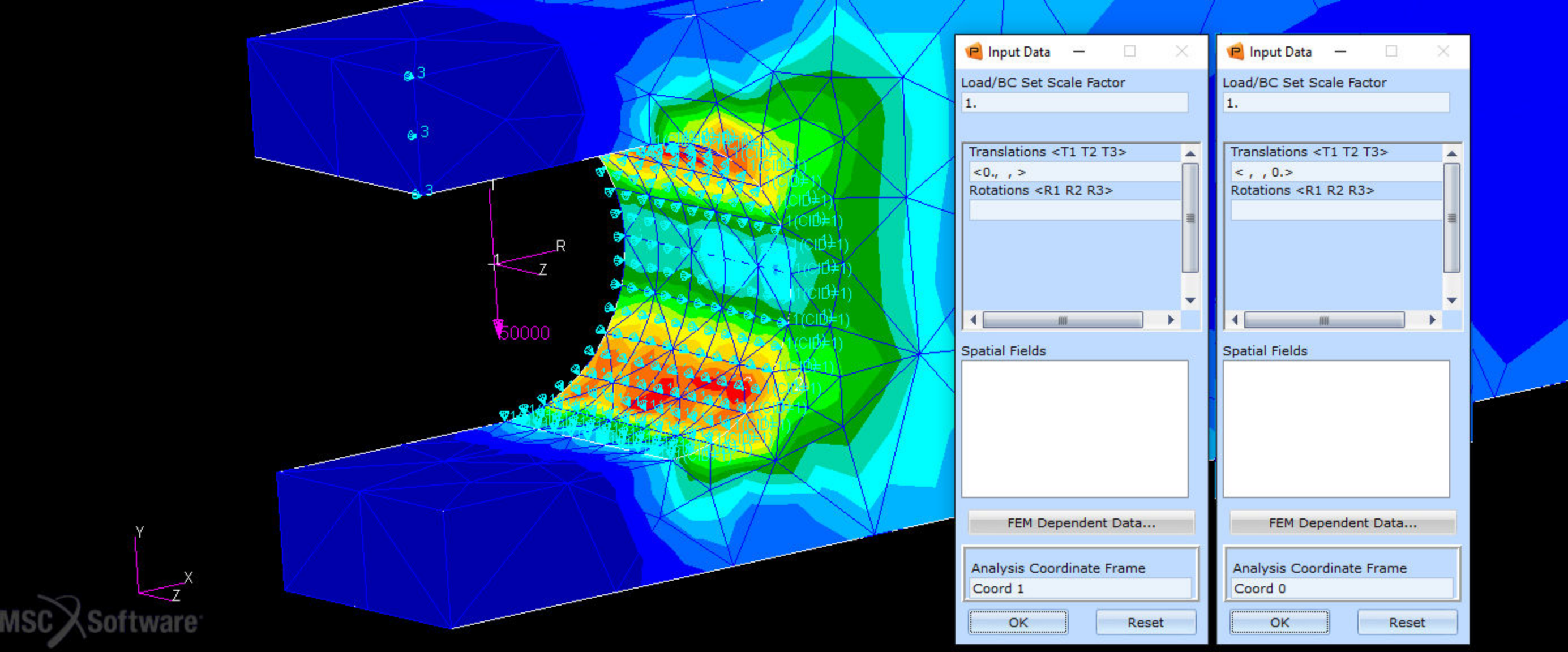
Test 2:
- all nodes constrained in R

- Result: fully constrained





Test 3:
- all nodes constrained in R, and 3 random
nodes constrained in Z
- Result: fully constrained



Input Data

Load/BC Set Scale Factor
1.

Translations <T1 T2 T3>
<0., , >

Rotations <R1 R2 R3>

Spatial Fields

FEM Dependent Data...

Analysis Coordinate Frame
Coord 1

OK Reset

Input Data

Load/BC Set Scale Factor
1.

Translations <T1 T2 T3>
< , , 0.>

Rotations <R1 R2 R3>

Spatial Fields

FEM Dependent Data...

Analysis Coordinate Frame
Coord 0

OK Reset