



HEXAGON

Button bars

Basic handling

FAQ handling/configuration
20 July 2021
Created with Version 13.0.4.3

Information about this document

All rights, including translation in foreign languages, are reserved. It is not allowed to reproduce any part of this document in any way without written permission of Hexagon.

Parts of this document may be automatically translated.

Document History

Version	Date	Author(s)	Modifications / Remarks
	16.07.2021	SJ	Initial release



CONTENTS

1	Functionality of the button bars.....	4
2	Show button bars.....	5
2.1	Show anchored button bars.....	6
2.2	Show Button Bars in the Assistant.....	8
3	Managing the button bars and the button bar elements.....	11

1 Functionality of the button bars

One of the tools for simplified handling in the Q-DAS applications are the button bars. These are so-called toolbars with individually configurable buttons for executing important or frequently used functions. For example, the following tasks can be carried out with a click on a button:

- Loading a data record in procella with various additional combinations as a default for data entry, e.g. the button bar "PV_Buttons_03" included in the standard delivery.
- Call up the "Value chart" graphic with the subsequent change of the additional data allocation according to the selected button, e.g., the "Allocation of additional data" button bar included in the standard delivery.
- Generating or printing reports.
- Change of evaluation strategy or database connection.
- Perform a sequence of commands automatically (Q-DAS scripts).
- An example of a Q-DAS script would be the appending of characteristics with the sequence: Close all windows, switch to the last characteristic, append characteristic, open characteristics mask for manual input.
- - Attach a predefined event or/and attribute to the measurement when acknowledging a measurement in O-QIS MCA/CMM Reporting.
- Etc.

The standard delivery includes exemplary button panels. Individual button bars can be created with the button bar designer.



The button bar designer is bound to the licence of the Form designer (Q-FD), except in Q-DAS O-QIS MCA/CMM Reporting. The Form designer "Q-DAS FormDesigner" is a chargeable product and requires a valid licence to run. If you are interested, please contact your Q-DAS contact person or send us an enquiry to info.qdas.mi@hexagon.com.

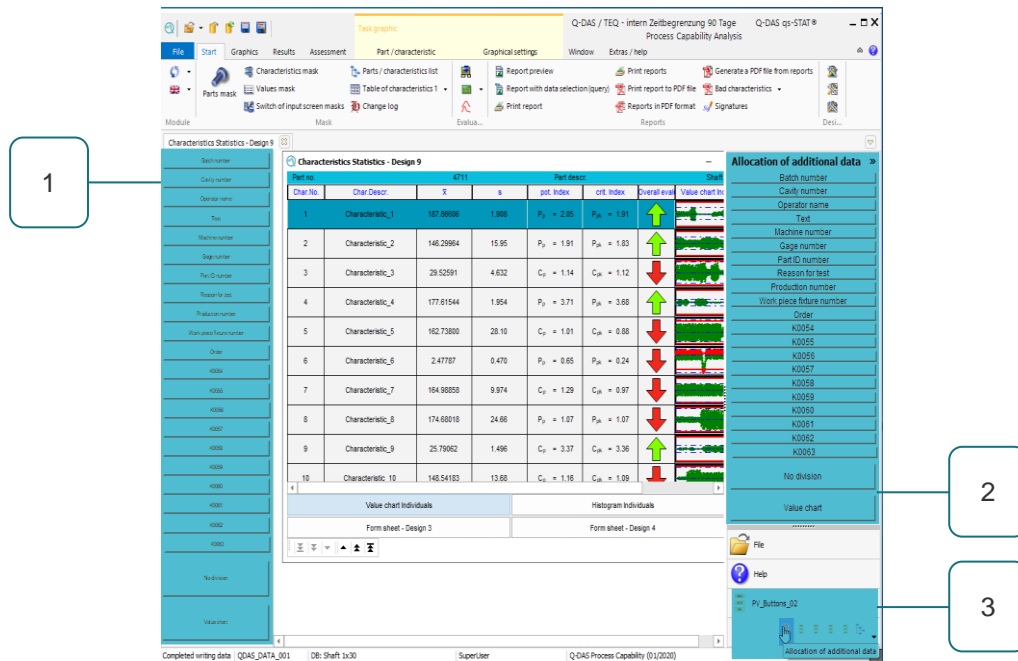
The functions, analysis methods, output points and graphics offered in the button bar designer are module dependent. Therefore, it is recommended to create or customise the toolbars only in the module in which the toolbar is to be used.



This document is in no way a substitute for training. If you would like information about our training offer, you can find it on our homepage at <https://www.q-das.com/en/training>

2 Show button bars

In the Q-DAS applications, the button bars can be displayed as fixed or selectable bars. If only one button bar is used, it can be shown as a horizontal or vertical bar in the Q-DAS application at a fixed position. However, if you do not want to restrict the workspace by showing the button bar, the button bars can be integrated in the Q-DAS Assistant. In contrast to a fixed button bar, the Q-DAS Assistant can be displayed minimised. In addition, the Q-DAS Assistant allows several button bars to be integrated. This also makes it possible to switch quickly between different button bars.



The screenshot displays the Q-DAS application interface. A table titled 'Characteristics Statistics - Design 9' is shown with the following data:

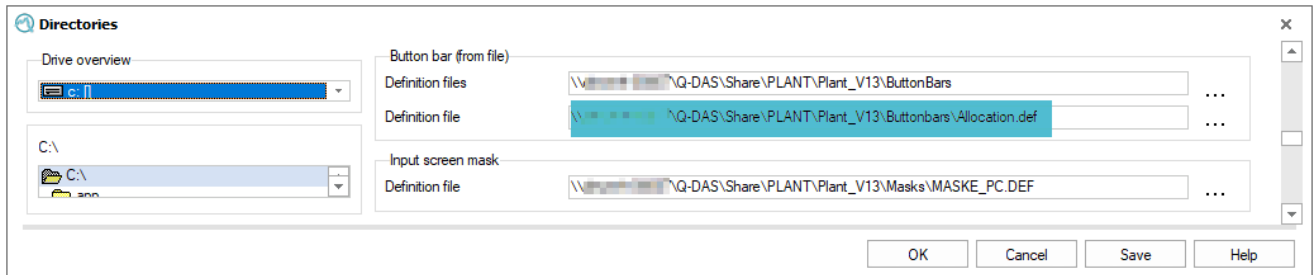
Part no.	Char. Descr.	\bar{x}	s	pot. index	crit. index	Overall eval.	Value chart
1	Characteristic_1	157.80596	1.998	$P_p = 2.95$	$P_{pk} = 1.91$	↑	[Chart]
2	Characteristic_2	148.28964	15.95	$P_p = 1.91$	$P_{pk} = 1.83$	↑	[Chart]
3	Characteristic_3	29.52591	4.632	$C_p = 1.14$	$C_{pk} = 1.12$	↓	[Chart]
4	Characteristic_4	177.61544	1.954	$P_p = 3.71$	$P_{pk} = 3.68$	↑	[Chart]
5	Characteristic_5	162.73800	28.10	$C_p = 1.01$	$C_{pk} = 0.88$	↓	[Chart]
6	Characteristic_6	2.47737	0.470	$P_p = 0.65$	$P_{pk} = 0.24$	↓	[Chart]
7	Characteristic_7	164.98553	9.974	$C_p = 1.29$	$C_{pk} = 0.97$	↓	[Chart]
8	Characteristic_8	174.60018	24.68	$P_p = 1.07$	$P_{pk} = 1.07$	↓	[Chart]
9	Characteristic_9	25.79062	1.496	$C_p = 3.37$	$C_{pk} = 3.36$	↑	[Chart]
10	Characteristic_10	148.54192	13.88	$C_p = 1.16$	$C_{pk} = 1.09$	↓	[Chart]

Callout 1 points to the left sidebar containing various toolbars. Callout 2 points to the 'Allocation of additional data' button bar on the right, which lists fields like Batch number, Cavity number, Operator name, etc. Callout 3 points to the 'PU_Button_02' button bar at the bottom right.

1. button bar "Allocation of additional data" is firmly anchored in the Q-DAS application.
2. the button bar "Allocation of additional data" is displayed in the wizard.
3. wizard with various selectable button bars.

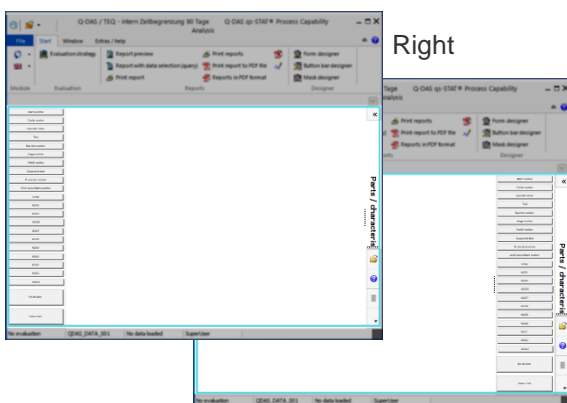
2.1 Show anchored button bars

To display a button bar as a fixed bar, the button bar is stored in the paths of a Q-DAS application. To do this, the path and the name of a button bar configuration file are stored via the File | Configurations | Paths | Button bar | Definition file dialogue. The configured button bar is accepted after confirmation via the "Save" button.

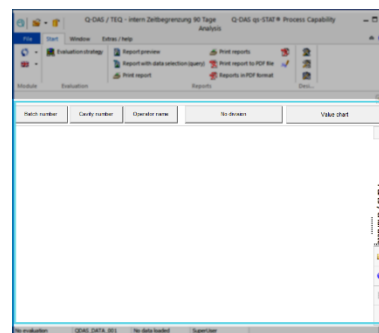


The button bar configured under Paths can be given four different automatically assigned positions within the workspace of a Q-DAS application.

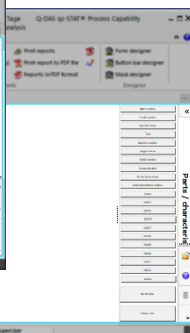
Left



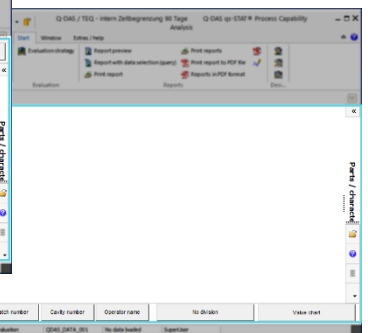
Above



Right



Below



The position of an anchored button bar in the workspace of a Q-DAS application depends on the aspect ratio of the button bar itself, as well as the position of the button bar designer in the workspace of a Q-DAS application during the creation of a button bar.

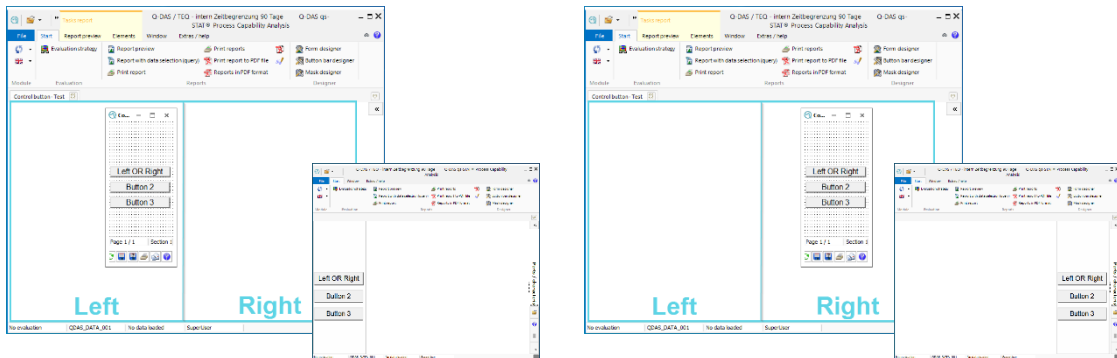
Aspect ratio

- **Vertical**
If the height of the button bar designer is greater than the width, the button bar saved in this way is classified as a vertical button bar and can be positioned to the left or right.
- **Horizontal**
If an aspect ratio is selected for a button bar where the height is smaller than the width, the button bar is classified as a horizontal button bar and can be positioned at the top or at the bottom.

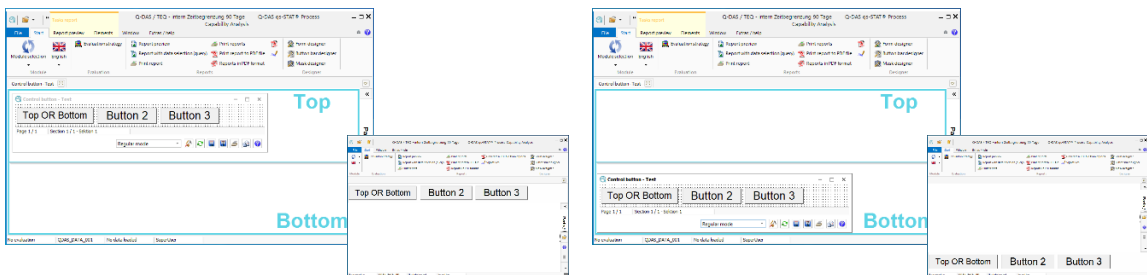
Position of the vertical or horizontal button bar

The position of the button bar designer in the workspace of a Q-DAS application when saving a button bar is decisive for the position of an anchored button bar.

- Vertical (left / right)
If the position of the button bar designer is in the left half of the workspace when saving a vertical button bar, this button bar is positioned on the left when anchoring. If the button bar designer is in the right half of the workspace when saving, the button bar is positioned on the right when anchoring.



- Horizontal (above / below)
If the button bar designer is saved with a horizontal aspect ratio in the upper half of the workspace, the button bar saved in this way is anchored at the top after it is shown. If the button bar is saved in the lower half of the workspace, it will be anchored at the bottom of the workspace.



Opening a button bar definition file in the Button Bar Designer results in a reset of the positioning to the top left position. If a specific position is desired when using an anchored button bar, it must be set before saving.

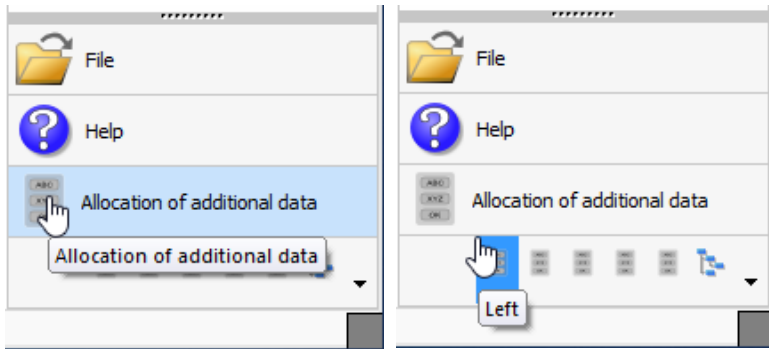


Depending on the type of installation, the configuration of a button bar via paths is saved in the %Product%.ini or, in the case of a client installation, in the %Windows_PC_NAME%.%Product%.ini. This means that the button bar anchored via the paths is only available for the configured module on the configured PC (local or client) for all Q-DAS users.

2.2 Show Button Bars in the Assistant

The Q-DAS Assistant offers the possibility of integrating several button bars. Switching between the individual button bars is done via the corresponding button bar selection in the footer of the wizard.

Select button bar



The size of the symbol display for calling up the button bars depends on the individual configuration of the Q-DAS Assistant. The desired button bar is displayed by clicking on the corresponding button bar symbol.

Button bar display in the Q-DAS Assistant

Regardless of its aspect ratio, a button bar is displayed according to the area available in the Q-DAS Assistant. The button bars are displayed in scaled form. If a horizontal button bar is integrated, i.e., a button bar whose height is smaller than its width, this button bar is displayed distorted in the Q-DAS Assistant.

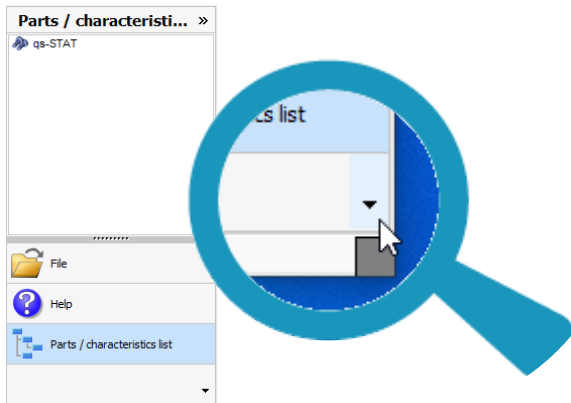
A vertical button bar in the Q-DAS Assistant

A horizontal button bar in the Q-DAS Assistant



Integrate and manage button bar

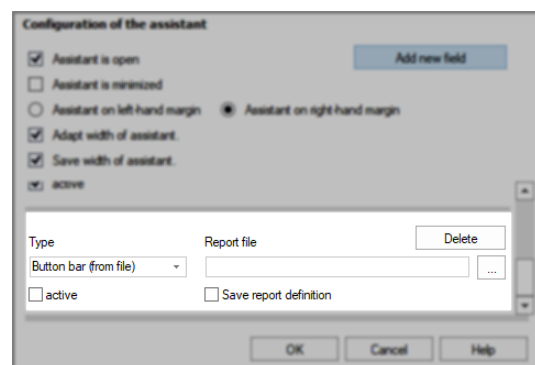
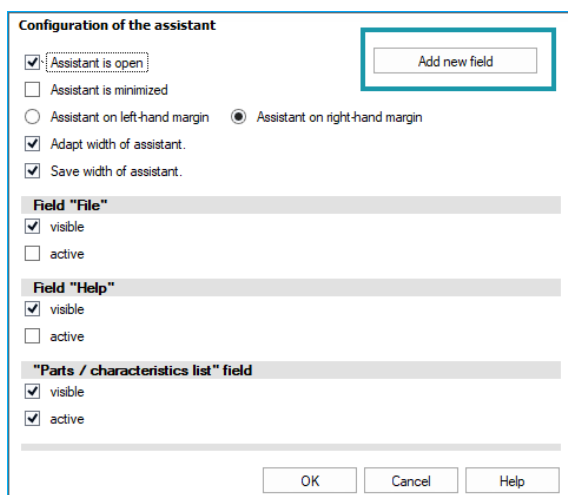
Before a button bar can be displayed in the Q-DAS Assistant, it must be integrated via the "Assistant configuration" dialogue. The configuration dialogue is called up by selecting the "Arrow" button on the footer of the assistant.



If the assistant is not visible, it can be activated via File | Configurations | General settings | Desktop | Show assistant.

The button "Add new field" offers the possibility to add new button bars to the Q-DAS Assistant.

Various elements are provided for integrating and managing a button bar in the Q-DAS Assistant.



- **Type of configuration file**
This configuration dialogue only allows the addition of button bar configuration files. Therefore, under "Type" the entry "Button bar" is automatically preset.
- **Select report file**
Clicking on the "..." button opens the dialogue for selecting a button bar configuration file. The dialogue searches for DEF files in the directory stored under File | Configurations | Paths | Button bar | Definition files. After selecting a DEF file and confirming with the "OK" button, the selected file name appears in the "Report file" field.
- **"Delete" button**
An already integrated button bar can be removed from the Q-DAS Assistant by selecting the "Delete" button.
- **Option "active"**
The option "active" determines which content is displayed as default in the Q-DAS Assistant. If the option "active" is set for a button bar, this button bar is automatically displayed in the Q-DAS Assistant after starting a Q-DAS application.
- **"Save Report Definition" Option**
By activating this option, the information from the button bar configuration file is transferred to the configuration database. In this application, the stored path serves only as a reference. The actual configuration of the button bar is taken from the configuration database.



The configurations made in the "Wizard configuration" dialogue are saved in the configuration database. This means that the current user receives the same display of the Q-DAS Assistant for the module currently in use on every PC that uses the same configuration database.

If the "Save report definition" option is not activated, the information from the button bar configuration file (DEF file) is used to display the button bar. The path of the DEF file from the configuration database is used. This is a dynamic integration of the button bar. Every change to the DEF file arrives in the Q DAS Assistant.

If the option "Save report definition" is activated, the information from the button bar configuration file is copied into the configuration database. This is a static integration of the button bar.



Updating the configuration changes in a statically integrated button bar is not provided for by a Q-DAS application. If an update is desired in this application case, the button bar must be deleted from the Q-DAS Assistant and the changed button bar configuration file must be integrated again.

The syntax used to save a button bar has been further developed with each new major version, especially with regard to the database selection buttons. In the case of a major update, it is recommended to update the toolbars. To do this, save the button bar in the new version.

3 Managing the button bars and the button bar elements

The Q-DAS applications offer various options for saving button bars themselves as well as the selection options and configurations of the button elements. The use of the different storage options depends on the distribution of the button panels to different users or workstations, as well as the decision which button content should be made available to the different users or workstations. For example, different test plans can be made available at different measuring stations for loading via the button bars.

When creating a button bar and configuring the buttons, the previously created distribution concept is applied. Therefore, it is possible that not every user and every workstation will receive the same button bar.

The creation of the button bars with the Q-DAS application Button Bar Designer is described in a separate document. You can find this on our homepage under <https://www.q-das.com/en/service/support-hotline#faqs|||>