



HEXAGON

CATALOGUES

V13

FAQ
5 January 2023
Created with Version 13.0.4.5

Information about this document

All rights, including translation into foreign languages, are reserved. It is not allowed to reproduce any part of this document in any way without written permission of Hexagon.

Parts of this document may be automatically translated.

Document History

Version	Date	Author(s)	Modifications / Remarks
12.0.2.1	04.08.2021	GA	Translation
13.0.4.5	16.08.2021	GA	Revision
v-0.5	05.01.2023	SJ	Revision screenshots and wording

CONTENTS

1	Functionality of the catalogues	4
2	Working with the catalogues	5
3	Overview and Calling the Catalogue Dialogues	7
3.1	Dialogue "Catalogue selection	8
3.2	Dialogue "Edit Catalogues	11
3.2.1	Dialogue area catalogue entries (explanation of the functions of the various columns in a catalogue)	12
3.2.2	Sort and filter catalogue entries	13
3.2.3	Edit catalogue entries	15
3.2.4	Sub-catalogues	19
3.3	Special functions in various catalogues	21
3.3.1	Gage catalogue	21
3.3.2	Process parameter catalogue	21
3.3.3	Event catalogue	24
3.3.3.1	Sub-catalogues for events, measures and cause	25
3.4	Dialogue "Catalogue Transfer"	26

1 Functionality of the catalogues

The use of catalogues not only serves to speed up the entry of recurring information such as additional data or units, but also as a form of spell check. This way, different spellings can be prevented, which simplifies the later use of automatisms for evaluation, such as the use of filters and selections. Another advantage of catalogue use is the saving of storage space, which is achieved through the use of internal identification (ID).

Two different management options are available for working with catalogues:

- **Catalogue data from file**
The catalogue information is stored in a central file. To ensure that all systems and user groups work with the same catalogues, they must be configured accordingly.
- **Catalogue data from database**
The catalogue information is stored in the data database, i.e. the database in which the measured values are also stored. When working with several data databases, this means that when switching to another database, the catalogues of the new database are also used.

2 Working with the catalogues

The integration and use of the catalogues in the Q-DAS applications is possible at various points. The inclusion of some catalogues in the wrong places has no effect, e.g. the inclusion of the inspector catalogue in the parts masks.

Basically, the use of catalogues is divided into two categories.

- Catalogues for additional data (K00xx level)

Values mask

Characteristic			
Number	Description	Up. Spec. Lim.	Lo. Spec. Lim.
1	1		

1	Machine number
1	10,123 >>
2	
3	
4	
5	
6	
7	
8	
9	
10	

Selection: Machine Catalog

Catalog name
Machine Catalog

Search for ...
|

available
M001 - Machine 1
M002 - Machine 2
M003 - Machine 3
M004 - Machine 4

- Catalogues for parts and characteristics level (K1xxx and K2xxx level)

Manufacturer No.	Manufacturer name	Test Location
	<ul style="list-style-type: none"> Manufacturer name 1 Manufacturer name 2 Manufacturer name 3 Manufacturer name 4 	
Material number		Machir
Contractor Number		Produc
Customer Number	Customer Name	Plant Sector
		Works






The following table shows the initial positioning of the different catalogues.

Catalogue name	Use	Information:
Machine catalogue	Additional data level K0010	Sometimes also applied at the part level
Nest catalogue	Additional data level K0007	
Process parameter catalogue	Additional data level K0011	
User catalogue	Additional data level K0008	Can be replaced by the user list
Gage catalogue	Additional data level K0012	
Event/Measures/Cause Catalogue	Additional data level K0005	3 related catalogues
K0061 catalogue	Additional data level K0061	Freely nameable in the text database
K0062 catalogue	Additional data level K0062	Freely nameable in the text database
K0062 catalogue	Additional data level K0063	Freely nameable in the text database
Unit catalogue	Characteristic level	
Client catalogue	Part level	
Order catalogue	Part level	
Product catalogue	Part level	Main use in the EMPB
Manufacturer's catalogue	Part level	Main use in the EMPB
Customer catalogue	Part level	Main use in the EMPB
Supplier catalogue	Part level	Main use in the EMPB
Employee catalogue	Part level	Main use in the EMPB Can be replaced by the user list
Material catalogue	Part level	
Drawing catalogue	Part level	

3 Overview and Calling the Catalogue Dialogues

Various dialogues are available for working with the catalogues. These can be called up via the menu *File | Configuration | Catalogues*.

Catalogues

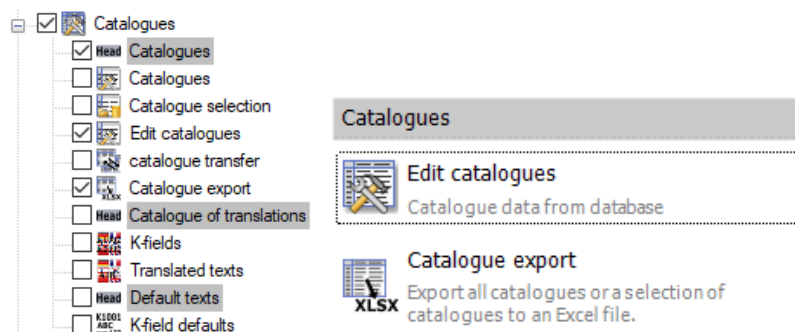
- 
Catalogues
 Select source of catalogues and edit catalogues
- 
Catalogue selection
 Selection of catalogue source
- 
Edit catalogues
 Katalogdaten aus Datenbank
- 
catalogue transfer
- 
Catalogue export
 Export all catalogues or a selection of catalogues to an Excel file.

The "Catalogue selection" dialogue is, so to speak, a universal dialogue that contains the catalogue selection, configuration and editing.

With the development of the authorisation levels, the dialogues "Catalogue selection" and "Edit catalogues" were created. This makes it possible to restrict the selection of dialogues for user groups via the configuration of the ribbon and to make only the required dialogues available to the user group.

Restricting the Ribbon - Example

With the following configurations of the ribbon, the user only gets the dialogues for editing and exporting the catalogues.



Another possibility to restrict the permissions are the user rights "Edit catalogues" and "Edit sub-catalogues". If the user only has the right "Edit subcatalogues", he cannot create new catalogue entries or change existing

ones. The rights are limited to creating, deleting and renaming sub-catalogues as well as assigning existing catalogue entries to sub-catalogues or removing the assignment.

3.1 Dialogue "Catalogue selection"

With this dialogue it is possible to configure the catalogue source.

Catalogue source

no catalogues

Catalogue data from database

Catalogue data from file

Catalogue file:

Catalogue data from data set

Replace operator and employee catalogue by user list

Filter group

No catalogues

No catalogues are used.

Catalogue data from file

To use the catalogue data from a file, activate this option and then select the connection to the corresponding DFD file via the *Select file* button. If several workstations are to access the same catalogue information, the catalogue file must be stored in a central directory in order to be able to set up joint access.

Catalogue data from database

When activating this option, the catalogues from the database are used.

Catalogue data from data set

This option is purely an information display and is not intended to be used for general catalogue management. Rather, this option is intended for data exchange between, for example, suppliers and customers. Activation is done via the loaded data set. If a data set is loaded that contains catalogue information, the option "Catalogue data from data set" is automatically set by the Q-DAS application and the catalogue entries stored in the data set are used.



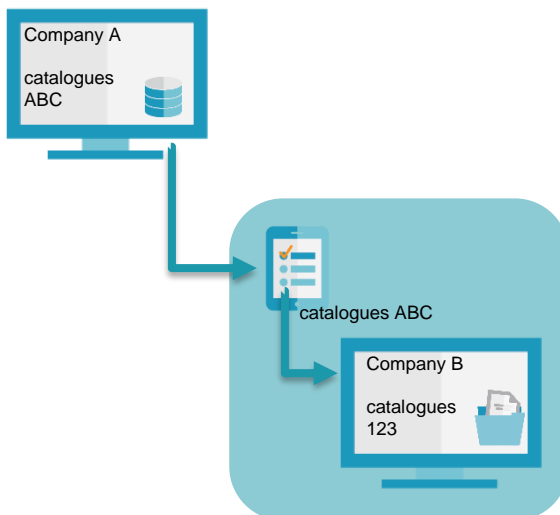
If a record with catalogue information (K4xxx fields) is loaded into the database, either manually or via Q-DM (upload), the catalogue information contained in the record is ignored and not transferred to the database.

Catalogue data from data set - example

In the following example, a data set with currently used catalogue entries is created in order to transfer it from company A to company B. The data set is then transferred from company A to company B. The data set is then transferred from company A to company B. By creating a data record with catalogue entries, the exchange of the individual catalogues between the two companies is no longer necessary.



Both companies use different catalogues with different entries.



With the temporarily activated option "Save catalogue data to file", *File | Configuration | additional settings | Save options*, the test plan is saved as a file and transferred to Company B.

If the transferred inspection plan is loaded as a file in company B, the option "Catalogue data from data set" is automatically set and the inspection plan uses the catalogue entries of catalogue "ABC".

If company B saves the transferred inspection plan in its own database, the catalogue entries "ABC" are lost. As soon as it is saved in the database, the inspection plan uses the entries of catalogue "123".

Replace operator and employee catalogue by user list

By activating this option, the users available in the user list are offered for selection instead of the users entered in the operator and employee catalogue.

If, in addition to the activated option, the user group right "Allow operator name input in additional data recording" is deactivated, the logged-in user is automatically included in the entry.

Subsequent activation of the option can lead to incorrect allocation. If measured values have already been recorded with the additional data field of the tester, it can lead to an incorrect assignment for the already recorded data after a changeover to this option.



To avoid data loss when activating this option later, it is recommended to work out the setting of this option in a workshop with the Q-DAS Project Team. Contact e-mail: info.qdas.mi@hexagon.com.

Up to version 12, the entire user list was displayed in the catalogue selection when using the option "Replace operator and employee catalogue by user list". A restriction to sub-catalogues or user groups was not possible.

Group filter

As of version 13, the selection of the user list can be restricted to a user group.

Replace operator and employee catalog by user list

Filter group

Operator

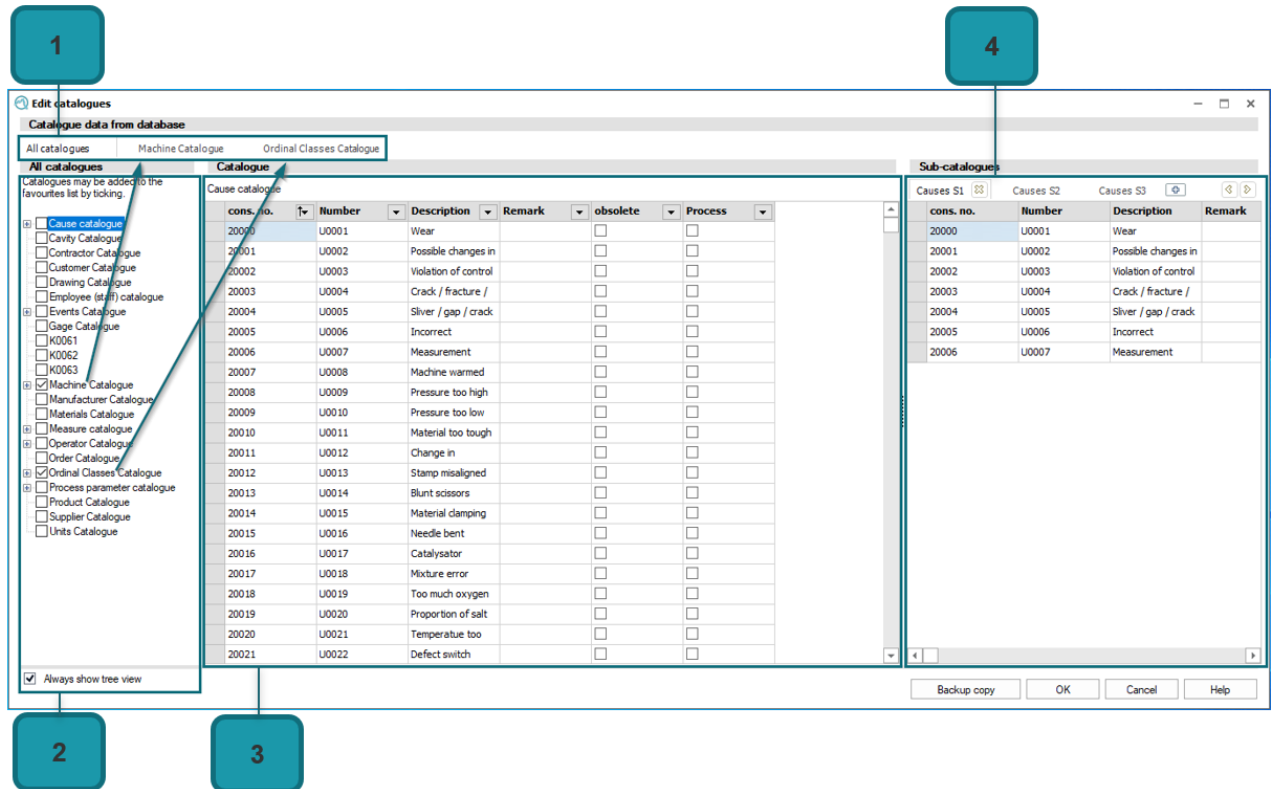
For the distribution of different group filters for different user groups, the use of configuration management is recommended.

If the user lists are used with group filters, but there are different group filters for different user groups, configuration management must be used to distribute the configuration.

The handling as well as the functions of the configuration management are described in a separate document "Configuration Management".

3.2 Dialogue "Edit Catalogues"

The "Edit Catalogues" dialogue is divided into different areas.

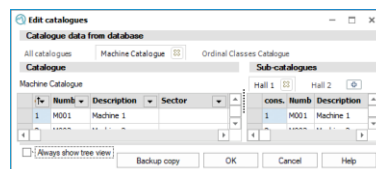
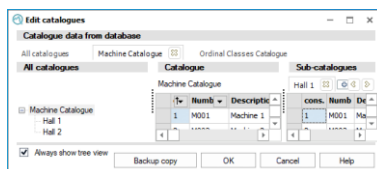


1. Tabs

By selecting the tabs, the listing in the dialogue can be restricted. While the "All catalogues" tab lists all available catalogues, the other tabs only show the selected catalogue. Activating or deactivating the tabs is done by setting the corresponding ticks in the navigation area.

2. Navigation area

By setting a check box in front of the catalogue designation, the catalogue is activated and is available as a separate tab. With the option "Always show tree view" the navigation area for the separate tabs can be switched on or off.



3. Detail area catalogue entries

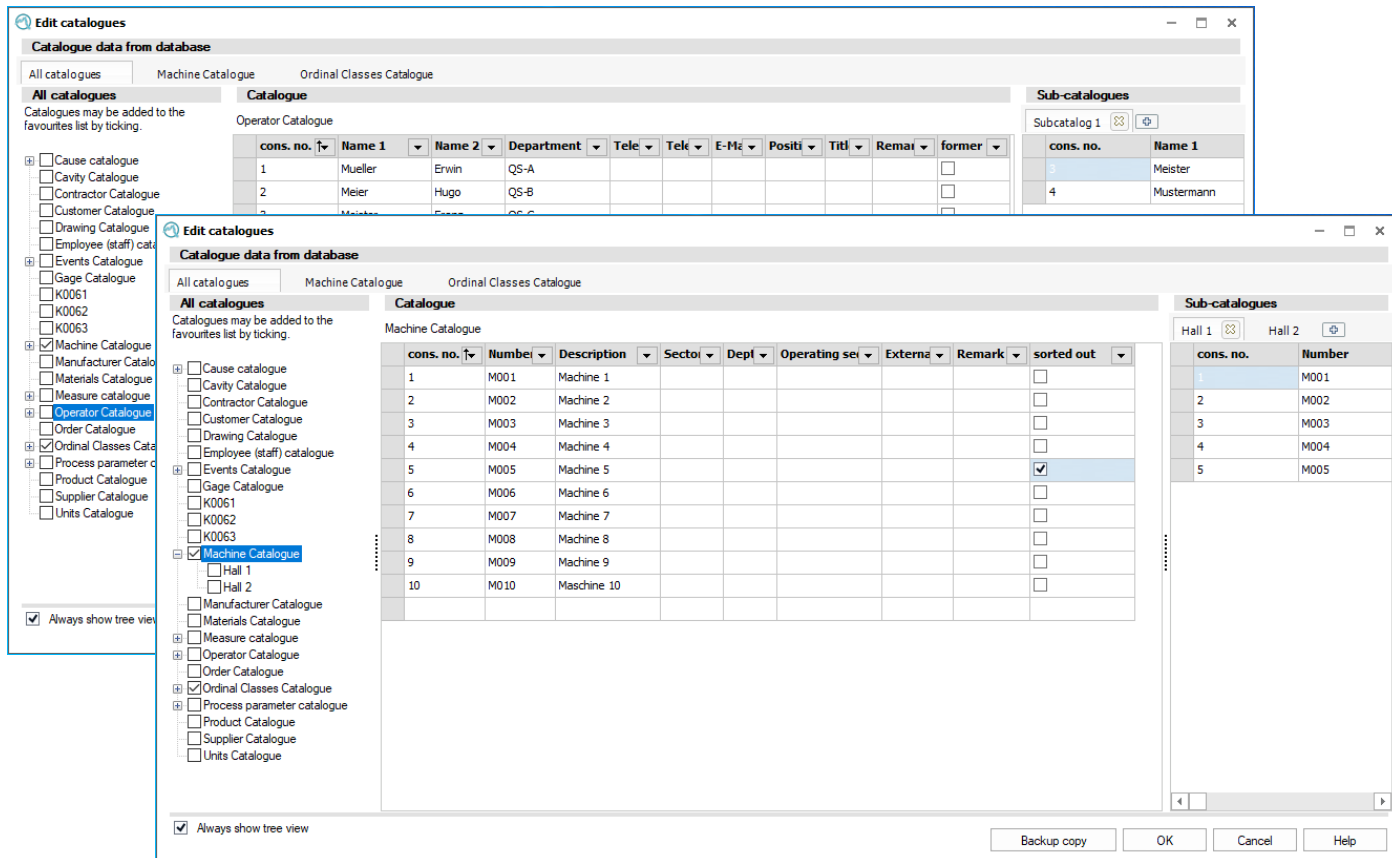
In this area it is possible to edit individual catalogue entries. You can select a catalogue for the detail area via the tabs or by selecting it in the navigation area.

4. Sub-catalogue entries detail area

In the case of catalogues with a large number of catalogue entries, these can be included in different sub-catalogues for clarity.

3.2.1 Dialogue area catalogue entries (explanation of the functions of the various columns in a catalogue)

The selection of columns in the catalogue entries detail area depends on the selected catalogue.



The screenshot shows the 'Edit catalogues' dialog box with two overlapping windows. The top window is titled 'Operator Catalogue' and the bottom window is titled 'Machine Catalogue'. Both windows show a tree view on the left and a table of catalogue entries in the center.

Operator Catalogue Table:

cons. no.	Name 1	Name 2	Department	Tele	Tele	E-M	Positi	Titl	Remar	former
1	Mueller	Erwin	QS-A							<input type="checkbox"/>
2	Meier	Hugo	QS-B							<input type="checkbox"/>

Machine Catalogue Table:

cons. no.	Number	Description	Sector	Dept	Operating se	Externa	Remark	sorted out
1	M001	Machine 1						<input type="checkbox"/>
2	M002	Machine 2						<input type="checkbox"/>
3	M003	Machine 3						<input type="checkbox"/>
4	M004	Machine 4						<input type="checkbox"/>
5	M005	Machine 5						<input checked="" type="checkbox"/>
6	M006	Machine 6						<input type="checkbox"/>
7	M007	Machine 7						<input type="checkbox"/>
8	M008	Machine 8						<input type="checkbox"/>
9	M009	Machine 9						<input type="checkbox"/>
10	M010	Maschine 10						<input type="checkbox"/>

The most important columns at a glance

- **Sequence number**
For unique identification of a catalogue entry. If, for example, catalogues are used for additional data collection, only the sequence number is added to the measured value.
- **Number and Description**
These are the most important fields for displaying catalogue information in the Q-DAS applications. The two fields are often used for the display of the value mask, axis labels, division of legends and the like.
- **Obsolete entries**
If there are entries in the catalogues that are no longer to be used for future recording, you have the option of deactivating them. Depending on the catalogue used, the column designation for the entries that are no longer to be used differs. In the events catalogue the designation "obsolete" is used, while in the machines catalogue the designation is "sorted out". Deactivating a catalogue entry is done by setting the check mark. This means that the obsolete entries are no longer available in the catalogue selection but continue to be used in the data already entered.

3.2.2 Sort and filter catalogue entries

The sort and filter functions are called up via the drop-down menu of a column heading, which is opened by clicking on the button next to the column heading.

Cause catalogue

cons. no.	Number	Description	Req
20000			
20001			
20002			
20003			
20004			
20005			
20006			
20007			
20008			
20009			
20010			

Sort by this column

remove filter

Text filter...

- (all)
- (empty)
- U0001
- U0002
- U0003
- U0004
- U0005
- U0006
- U0007
- U0008

OK Cancel

Sort

The sorting of the catalogue entries applies to the display in the "Edit catalogues" dialogue as well as to the selection lists. The column selected for sorting is indicated by an additional arrow symbol in the button next to the column heading.



Cause catalogue

cons. no.	Number
20000	10001

Sorting catalogue entries - example

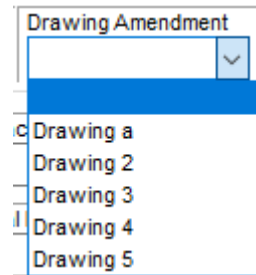
The following example uses the drawing catalogue to show the different sorting.

Sorting by Number

Drawing Catalogue

	cons. no. ▼	Number ▲	Description ▼
1		Z 001	Drawing a
2		Z 002	Drawing 2
3		Z 003	Drawing 3
4		Z 004	Drawing 4
5		Z 005	Drawing 5

The selection list according to the given sort order

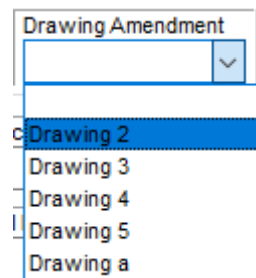


Sorting by Description

Drawing Catalogue

	cons. no. ▼	Number ▼	Description ▲
2		Z 002	Drawing 2
3		Z 003	Drawing 3
4		Z 004	Drawing 4
5		Z 005	Drawing 5
1		Z 001	Drawing a

The selection list according to the given sort order



Filter

The filter functions are used to limit the listed catalogue entries according to defined criteria. The setting of the filter criteria is temporarily valid. They are reset after closing the "Edit catalogues" dialogue. Whether a filter has been applied is indicated by an additional filter symbol in the button next to the column heading.



3.2.3 Edit catalogue entries

The contents of existing catalogue entries can be edited directly. Double-click on the corresponding field to activate it for editing.

Cause catalogue

cons. no.	Number
20000	J0001

For further functions, such as creating new entries or deleting existing ones, a context menu is available. This can be called up by right-clicking in the detail area of the catalogue entries.

<u>C</u> opy table
<u>C</u> opy Strg+C
<u>P</u> aste Strg+V
<u>D</u> elete field content Entf
<u>D</u> elete line Umschalt+Entf
<u>N</u> ew entry Einfg
<u>T</u> ransfer to sub-catalogue
<u>S</u> earch

Copy table

The active catalogue in the catalogue entries detail area is copied to the clipboard. This offers the possibility to insert them into an Excel application, for example.

Catalogue			
Machine Catalogue			
	cons. no.	Number	Description
1	M001		Machine 1
2	M002		Machine 2
3			
4			
5			
6			
7			
8			
9			
10			

	A	B	C	
1	cons. no.	Number	Description	Sect
2	1	M001	Machine 1	
3	2	M002	Machine 2	
4	3	M003	Machine 3	
5	4	M004	Machine 4	
6	5	M005	Machine 5	
7	6	M006	Machine 6	
8	7	M007	Machine 7	
9	8	M008	Machine 8	
10	9	M009	Machine 9	
11	10	M010	Maschine 10	

Copy / Paste

Selecting "Copy" copies the active area, marked fields or lines, to the clipboard and can be inserted as new catalogue entries by selecting "Paste".

Delete field content / delete line

With "Delete field content" it is possible to delete the marked area. If you select "Delete line", not only the fields of the marked area but the complete entries, i.e., the complete lines, are removed. The sequence number is only reassigned if the deleted line was the last catalogue entry.

New entry

Selecting "New entry" adds a new empty line at the end of the catalogue entries.

Catalogue				
Machine Catalogue				
cons. no.	Number	Description	Sector	
1	M001	Copy table		
2	M002	Copy	Strg+C	
3	M003	Paste	Strg+V	
4	M004	Delete field content	Entf	
5	M005	Delete line	Umschalt+Entf	
6	M006	New entry	Einfg	
7	M007	Transfer to sub-catalogue		
8	M008	Search		
9	M009	Column contains double records		
10	M010	Machine 10		

The desired entries here, e.g., number or designation. If no consecutive number is entered, it is automatically entered by the Q-DAS application.

Alternatively, a new entry can be created by editing the last empty line.

Transfer to sub-catalogue

If sub-catalogues have been created, this function can be used to add the selected catalogue entries to the active sub-catalogue. This function is only available for catalogue entries that are not in the active sub-catalogue.

Catalogue

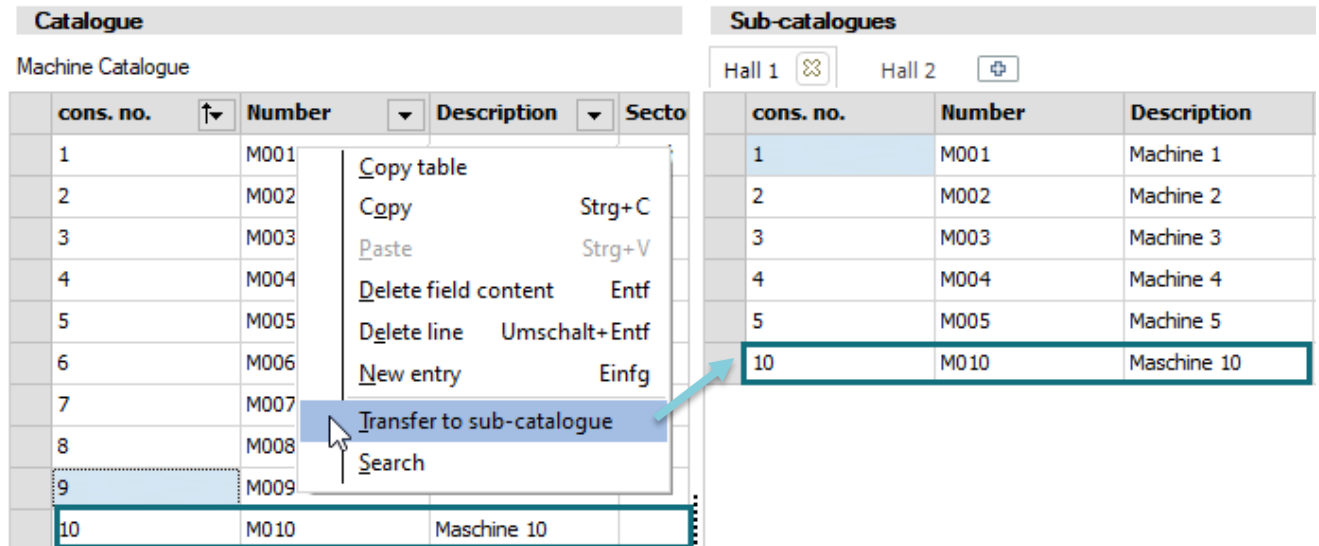
Machine Catalogue

cons. no.	Number	Description	Secto
1	M001		
2	M002		
3	M003		
4	M004		
5	M005		
6	M006		
7	M007		
8	M008		
9	M009		
10	M010	Maschine 10	

Sub-catalogues

Hall 1 Hall 2

cons. no.	Number	Description
1	M001	Machine 1
2	M002	Machine 2
3	M003	Machine 3
4	M004	Machine 4
5	M005	Machine 5
10	M010	Maschine 10



Search

The search area allows you to search the catalogue entries for predefined contents.

Search ✕

Search for ...

columns

cons. no.

Number

Description

Remark

Search complete word only

Upper/Lower case letters

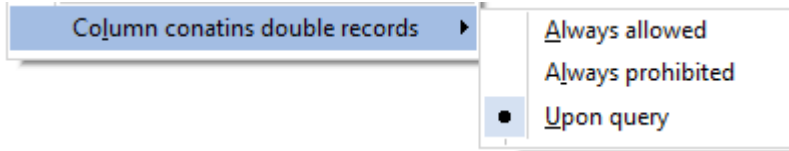
Search direction

Up

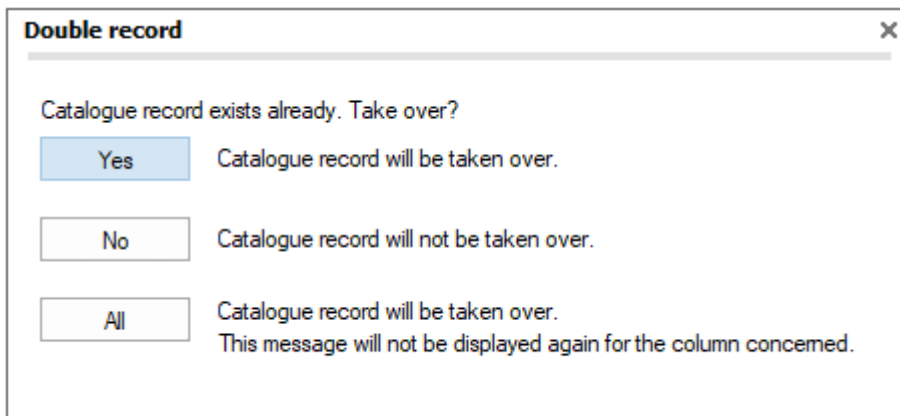
Down

Duplicate entries in this column

With the selection "Duplicate entries in this column" you determine how the duplicate entries are to be handled.



In principle, you can allow or prohibit duplicate entries. If you select the option "After query", you will be prompted to enter a duplicate entry.



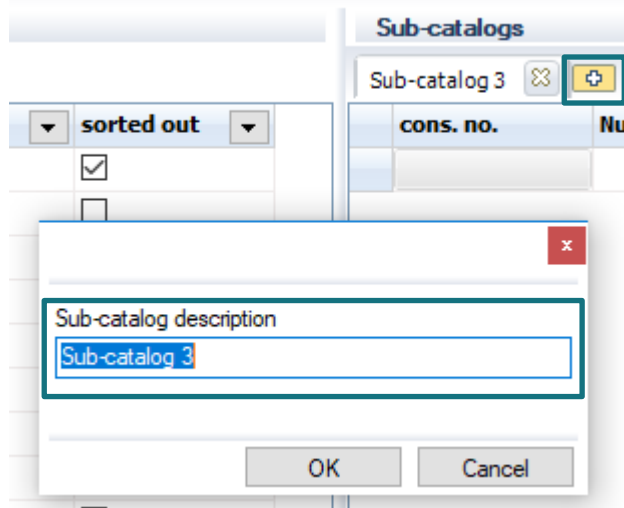
This query can be used to decide on a case-by-case basis whether the duplicate entry should be accepted or rejected. With the option "All", the current duplicate entry is accepted and the setting for the active column is changed to "Always allowed".

3.2.4 Sub-catalogues

In the case of catalogues with a very large number of catalogue entries, these can be divided into different sub-catalogues for clarity. A sub-catalogue is to be regarded as a subset of the main catalogue entries.

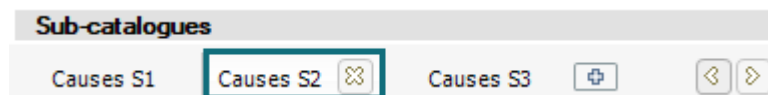
- **Create new sub-catalogue**

To create a new sub-catalogue, click on the button with the plus sign in the sub-catalogue area, then enter the name for the sub-catalogue and confirm the entry by clicking on the "OK" button.

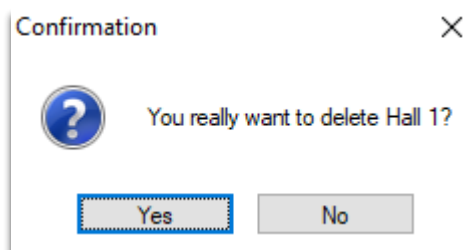


- **Deleting an existing sub-catalogue**

To delete a sub-catalogue, first activate the corresponding tab in the sub-catalogue entries area. Click on the "X" button next to the sub-catalogue name.







In order for the sub-catalogue to be finally deleted, the following query must be confirmed with "Yes".



- **Editing sub-catalogue entries**

The contents of existing catalogue entries can be edited directly. Double-click on the corresponding field to activate it for editing. Since a sub-catalogue entry is an assignment to the entry in the main catalogue, the corrections automatically take effect in the main catalogue.

Sub-catalogues					
Causes S1 		Causes S2		Causes S3 	
				 	
cons. no.	Number	Description	Remar	obso	Proce
20000	U0001	Wear		<input type="checkbox"/>	<input type="checkbox"/>
20001	U0002	Possible changes in		<input type="checkbox"/>	<input type="checkbox"/>

A context menu is available for further functions. This can be called up by right-clicking in the detail area of the sub-catalogue entries.

<u>C</u> opy table	
<u>C</u> opy	Strg+ C
<u>D</u> elete line	Umschalt+Entf
<hr/>	
<u>R</u> ename sub-catalogue	
<u>E</u> vents, Measures	
<u>S</u> earch	

Delete line: Selecting "Delete row" removes the assignment for the row in the active area, the active sub-catalogue entry so to speak, from the sub-catalogue.

Assign new catalogue entries to the sub-catalogues: First activate the tabs of the desired sub-catalogue in the detail area Sub-catalogue entries. Switch to the detail area of the catalogue entries and select the desired catalogue entry. Right-click to open the context menu and select "Transfer to sub-catalogue". Alternatively, an entry can be transferred by drag & drop.

3.3 Special functions in various catalogues

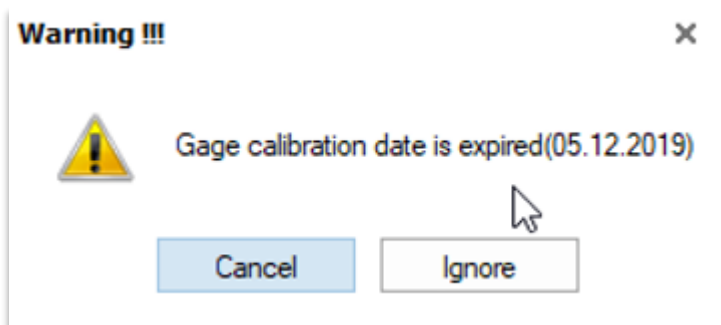
Some of the catalogues contain special functions. These are described below.

3.3.1 Gage catalogue

The special function in the gage catalogue is calibration. For this purpose, the catalogue contains the columns last and next calibration date.

Catalog						
Gage Catalog						
cons. no.	Number	Description	Gage Group	Latest calibration date	Next calibration date	
1	PM001	Caliper	Group 1	04.05.2017	05.12.2019	
2	PM002	Hardness tester	Group1			
3	PM003	Profile projector	Group 2			

If the last and next calibration dates have been stored in the catalogue for the selected test equipment and the period has been exceeded at the time of selection, the following warning is issued.



By selecting "Ignore" you can acknowledge the warning and continue working with the exceeded calibration date.



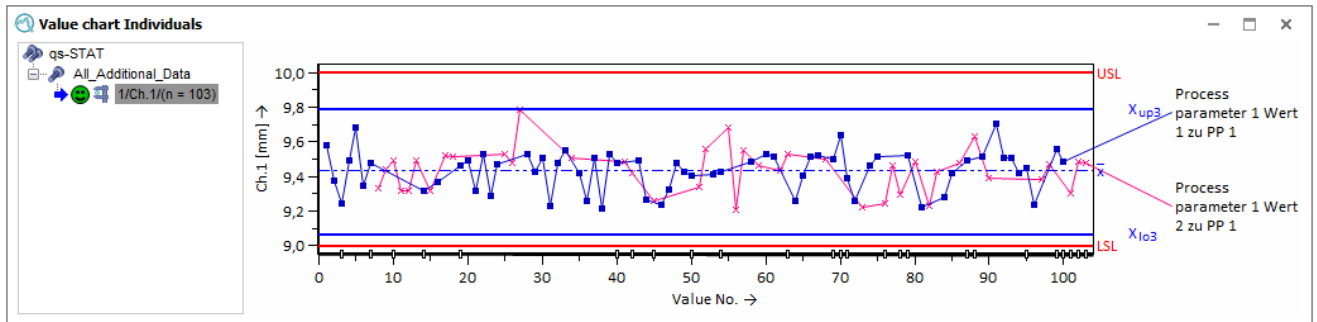
If the date format of the system is not observed when manually entering the calibration date, the entry is deleted when leaving the catalogue.

3.3.2 Process parameter catalogue

The process parameter catalogue was created to provide the user with an (almost) unlimited number of process parameter catalogues. However, the process parameter catalogue also has its disadvantages. Due to the special notation of the process parameters and values, not all functions are available in the Q-DAS

applications. These include, for example, the use of filters when reading from the database, the use of selection and the creation of automatic selections.

The process parameter catalogues should only be used if there are further additional data in existing data records that can be used for identification. In this way, the recorded process parameters could be displayed, for example, in the value progression.



For the process parameter catalogue, an additional detail area for the process parameter values is shown in addition to the detail areas catalogue entries and sub-catalogue entries. The special feature here is that for each catalogue entry a tab is automatically created for this entry in the detail area Process parameter values. Each tab in the process parameter values detail area can contain various values.

The process parameter catalogue included in the delivery contains six different catalogue entries with different numbers of process parameter values.

Catalogue data from database

All catalogues Machine Catalogue Ordinal Classes Catalogue **Process parameter catalogue**

Catalogue

Process parameter catalogue

cons. no.	Numbe	Description	Abbreviation	Remar	obsolet
1	PP 1	Process parameter	Proc par 1		<input type="checkbox"/>
2	PP 2	Process parameter	Proc par 2		<input type="checkbox"/>
3	PP 3	Process parameter	Proc par 3		<input type="checkbox"/>
4	PP 4	Process parameter	Proc par 4		<input type="checkbox"/>
5	PP 5	Process parameter	Proc par 5		<input type="checkbox"/>
6	PP 6	Process parameter	Proc par 6		<input type="checkbox"/>

Sub-catalogues

Process parameter catalog 1

cons.	Number	Description	Abbreviatio	Rema
1	PP 1	Process parameter	Proc par 1	
2	PP 2	Process parameter	Proc par 2	
3	PP 3	Process parameter	Proc par 3	
4	PP 4	Process parameter	Proc par 4	
5	PP 5	Process parameter	Proc par 5	
6	PP 6	Process parameter	Proc par 6	

Process parameter values

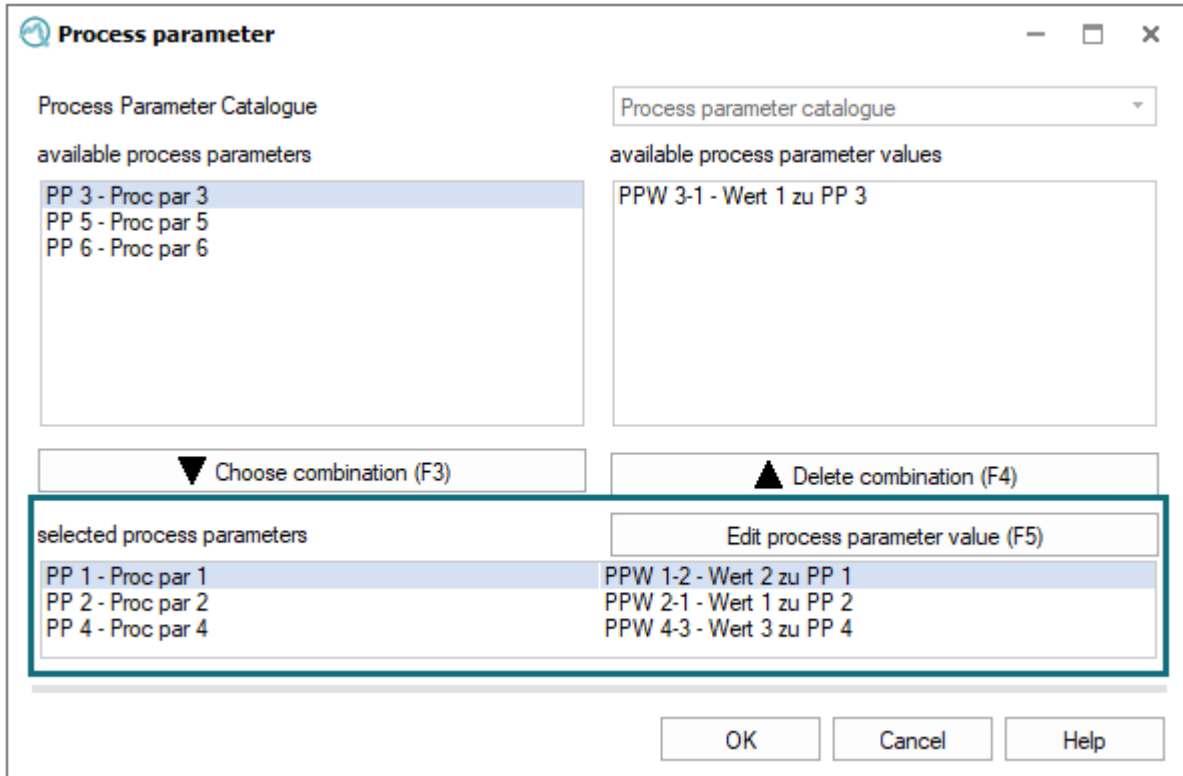
PP 1 PP 2 PP 3 PP 4 PP 5 PP 6

cons. no.	Number	Description
1	PPW 1-1	Wert 1 zu PP 1
2	PPW 1-2	Wert 2 zu PP 1

Sub-catalogues in process parameter catalogue

A sub-catalogue is considered a subset of the main catalogue entries. When creating or assigning a catalogue entry to a sub-catalogue, all associated process parameter values are automatically assigned to the sub-catalogue. It is not possible to assign individual process parameter values from different catalogue entries.

During data collection, one process parameter value can be selected per tab.

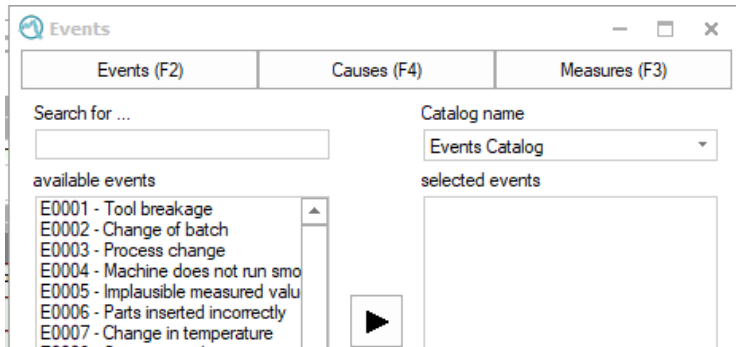


In the value mask, the selected process parameter values are displayed as follows.

	Characteristic_1	Process parameter
1	186,546	Process parameter 1 Wert 2 zu PP 1 ; Process parameter 2 Wert 1 zu PP 2 ; Process parameter 4 Wert 3 zu PP 4

3.3.3 Event catalogue

The catalogues Events, Measures and Causes correspond with each other. When entering events, the entries from the Measures and Causes catalogues are always offered during data entry. There is no restriction on the selection of entries. All entries from the three catalogues can be selected.



Even though the events, actions and causes are managed in their own catalogues in the "Edit Catalogues" dialogue, all three apply to the K field K0005. Here, different ranges are used for the sequential number.

Event	0-9999
Measure	10000-19999
Cause	20000-29999

The catalogues Events, Actions and Causes have as a further special feature the column "Process intervention event".

Catalog						
Cause catalog						
cons. no.	Number	Description	Remark	obsolete	Process intervention	
20000	U0001	Wear		<input type="checkbox"/>	<input checked="" type="checkbox"/>	

If this option "process intervention" is set and it is a moving QCC which is set for the characteristic, the QCC is interrupted to avoid overregulation and is only recalculated after the moving sample size has been refilled.

3.3.3.1 Sub-catalogues for events, measures, and cause

If a sub-catalogue is added to the Events, Measures or Causes catalogues, all related sub-catalogues are also created when the sub-catalogue is created, and the next free sequential number is suggested as the catalogue name. The catalogue names are freely selectable and can be changed.

Sub-catalogs			
Causes S5	Causes S6	Sub-catalog 20008	
cons. no.	Number	Description	Remark

✕

Correspondent event, measure and cause sub catalog

event sub catalog

measure sub catalog

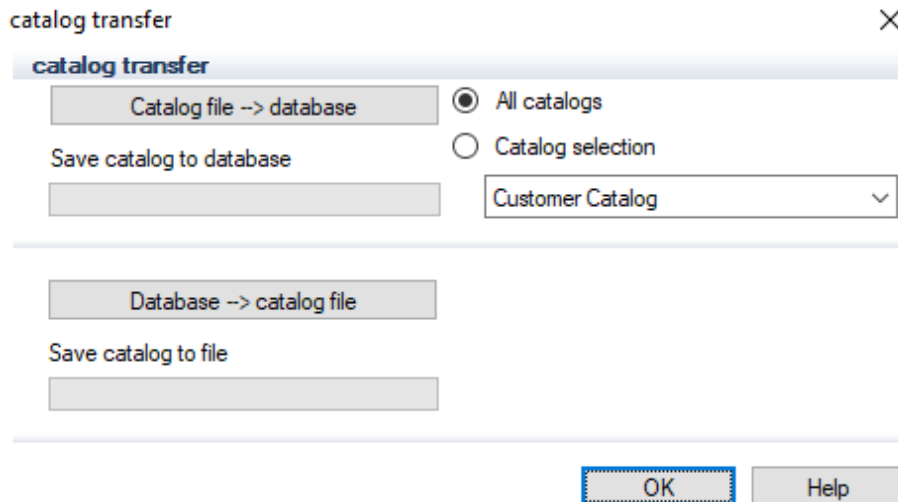
cause sub catalog

When selecting a sub-catalogue, all three related sub-catalogues are automatically listed. If, for example, a user selects event sub-catalogue 2 during data entry, he or she will receive measures sub-catalogue 2 and causes sub-catalogue 2 when selecting.

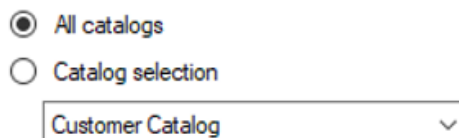
Events Catalog
Events Catalog, Measure catalog, Cause catalog
Events Catalog, Measure catalog, Cause catalog
Lathe, milling machine 1, Measures S1, Causes S1
Injection process 2, Measures S2, Causes S2
Textile industry 3, Measures S3, Causes S3
Chemical process 4, Measures S4, Causes S4

3.4 Dialogue "Catalogue Transfer"

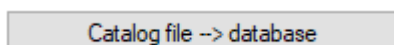
The dialogue "Catalogue transfer" offers the possibility to transfer the catalogue data from the database to a file or from a file to the current database.



Use the radio buttons and the selection field to specify which catalogues are to be replaced or transferred to a catalogue file.

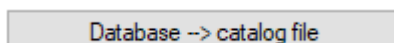


- Transfer catalogue from file to database



To select the catalogue file (DFD file), click on the button "Catalogue file →database". A warning message then appears stating that the existing catalogue entries in the database will be overwritten. Confirm the warning message with "OK" to start the transfer.

- Copy catalogue from database to catalogue file



With this button you can transfer the catalogue entries from your database to a catalogue file. After clicking on the button, you have the option of specifying the path and file name of the target file or selecting an existing file. Click on the "Save" button to start the transfer.

The catalogue transfer was successful when the respective progress bar is displayed in green at the end. The "Catalogue Transfer" window can then be exited via the "OK" button.