

CONFIGURATION MANAGEMENT CONFIGURTION OPTIONS

87298374 0987298374982739
8470 2 **Q-DBM** 7 1545 82138 12
7198723987 987239 98729872
PROCELLA 234 154 13 544 565
9872 2719827 7 27198723987
45 8912 687723 **VIDARA** 27198
21245 666 1214432 329 **Q-QIS**
928 234 345 344 4718723987
0187309 445 455 4877298374
M-QIS DASHBOARD 772728498
81 4981 **DESTRA** 918 2589 23
59 **QS-STAT** 49814981 45598
M-QIS ENGINE 49983 259 1547
7487 29837409872 98374982
73984702 **SOLARA.MP** 987349
9283 120 38 485 0 2 38 49081



CONTENTS

1	Configuration management	3
1.1	General	3
1.2	How to open the configuration management	4
1.3	Required Q-DAS user rights	4
1.4	General principle of inheritance regarding settings and configurations	4
1.5	Storage locations	5
1.5.1	How to store graphical settings / adaptations / global options	5
1.5.2	How to store settings in the QSSTAT2000.INI	6
1.5.3	Registry entries	6
1.5.4	What is the difference between storing in the *.INI and storing in the configuration database?	7
1.5.4.1	Button bar defined under "Paths"	7
1.5.4.2	Button bar integrated into the assistant	8
1.5.4.3	Button bar is stored only in the configuration database	9
1.6	Examples of use for the configuration management	10
1.6.1	Individual changes in the value chart	10
1.6.2	Activate the respective option in the General settings dialog box	12
1.6.3	Adapting the summary/input 10 mask in procella	13
1.7	As plant setting option	15
1.7.1	Approach	16
1.8	Make additional allocations option	16
1.9	Quick configuration	18
1.9.1	Example of a quick configuration	18

1 CONFIGURATION MANAGEMENT

1.1 General

Due to the configuration management, responsible persons have the opportunity to adjust the settings and configurations for user groups and single users. This tool has many advantages, especially when working with various user groups having different demands.

The settings adjusted here are saved to the central configuration database (normally QDASCONFIG.MDB) by default. The configuration management is particularly recommended in case of server-client installations including a central configuration database. However, you have to consider that each user applies the central configuration database. If this is not the case, the settings adjusted in the configuration management will not influence user group and user rights. The configuration management is available in the following products.

Standard software

- solara.MP
- procella
- qs-STAT
- vidara



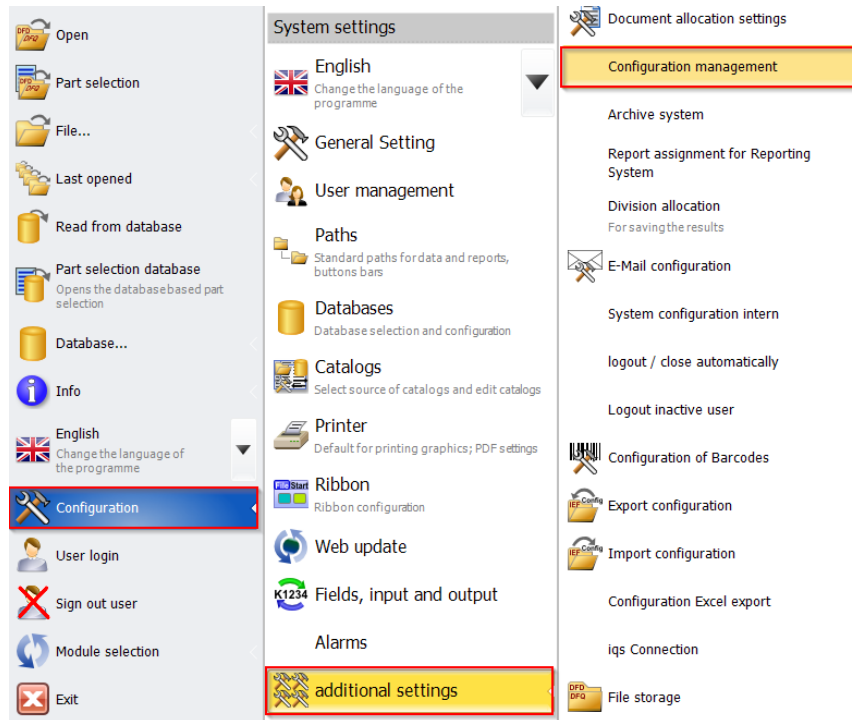
The configuration management is not available in destra.

Products of the Q-DAS CAMERA Concept

- O-QIS
- M-QIS
- Q-DAS Initial Sample Report
- Form Designer

1.2 How to open the configuration management

Open the configuration management as follows.



1.3 Required Q-DAS user rights

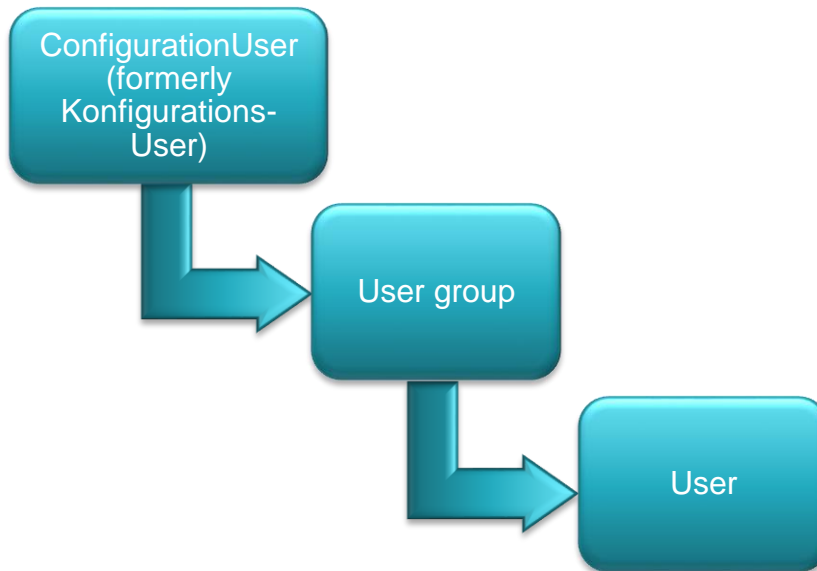
In order to adjust settings / graphic configurations in the configuration management, you have to be granted the **System configuration** user right in the user management.

1.4 General principle of inheritance regarding settings and configurations

In general, the following principle applies to the inheritance of settings/configurations in Q-DAS products.

- Settings adjusted by the ConfigurationUser (formerly Konfigurations-User) apply to all available user groups or users by default.
- In case a user group has got individual settings, these settings automatically apply to all users who are members of this user group. The settings of the ConfigurationUser (formerly Konfigurations-User) do not apply by default any longer.

- In case a user adjusted individual settings/configurations, these settings/configurations only apply to the respective user. The settings of the ConfigurationUser (formerly Konfigurations-User) do not apply by default any longer.



Please consider that the principles of inheritance explained above apply to each graphic separately, i.e. each single user might have graphics that are based on the settings of the ConfigurationUser (formerly Konfigurations-User). However, other graphical settings might differ from the default settings of the ConfigurationUser (formerly Konfigurations-User) since the respective user adjusted individual settings.

1.5 Storage locations

You can “only” adjust graphical settings and global options for different user groups/users (as described in chapter 1.5.1) in the configuration management. The options mentioned in chapters 1.5.2 and 1.5.3 are not available in the configuration management since the storage locations differ.

1.5.1 How to store graphical settings / adaptations / global options

Graphical settings and special adaptations of graphics (e.g. display of grid lines, value chart in black on white) are stored specifically to the respective user or user group in the configuration database (QDASCONFIG.MDB by default). Global options like the ones given in the “Setup data recording” window are also stored specifically to the respective user or user group in the configuration database.

1.5.2 How to store settings in the QSSTAT2000.INI

You enter the default paths into the QSSTAT2000.INI of the respective product. The respective application uses these paths as standard directories e.g. for the output of PDF files. In general, settings including paths (default directories / scripts / backup directories) are stored in the QSSTAT2000.INI of the respective product.



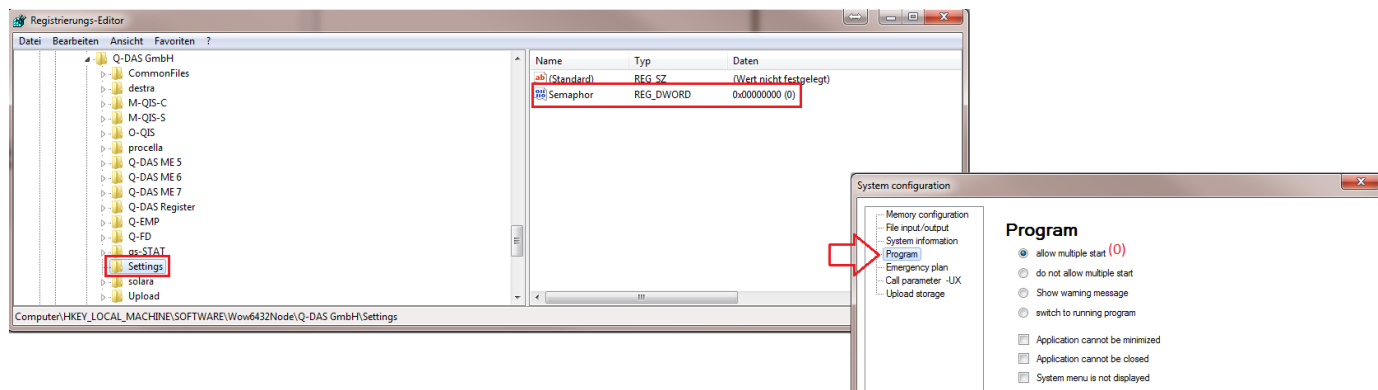
Depending on the type of installation, users might have their own QSSTAT2000.INI so that paths are stored there.



This option is not available in the configuration management.

1.5.3 Registry entries

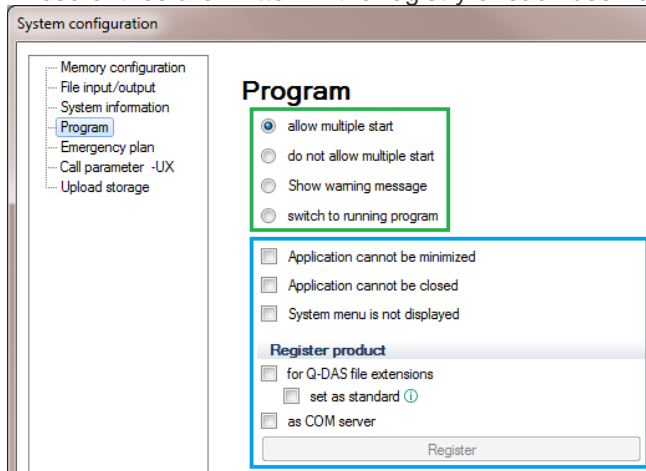
Program settings such as the program start options (*File|Configuration|Additional settings|System configuration intern*) are written in the registry of the respective computer. In order to be able to store the respective entries in the registry, you have to run the application as an administrator.



Additionally, you have to consider that the registry entries of activated options are set/stored at different storage locations.

- Entries are written in the registry of the respective computer. These entries generally apply to all users logged in to the system.

- These entries are written in the registry of each user logged in to the system.



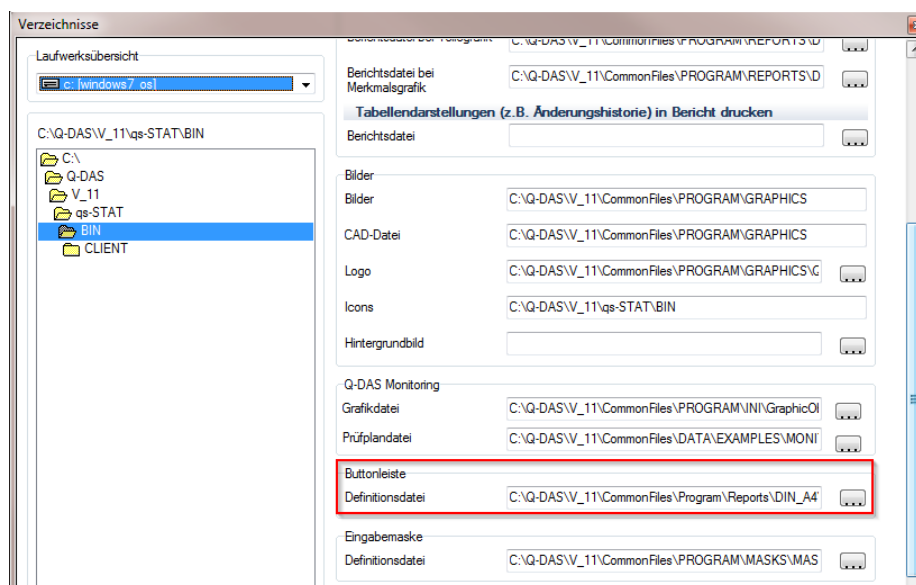
This option is not available in the configuration management.

1.5.4 What is the difference between storing in the *.INI and storing in the configuration database?

The following example is based on a button bar. This example illustrates the complexity of the various possibilities of saving.

1.5.4.1 Button bar defined under “Paths“

You can define a button bar to be applied in the software under *File|Configuration|Paths*.



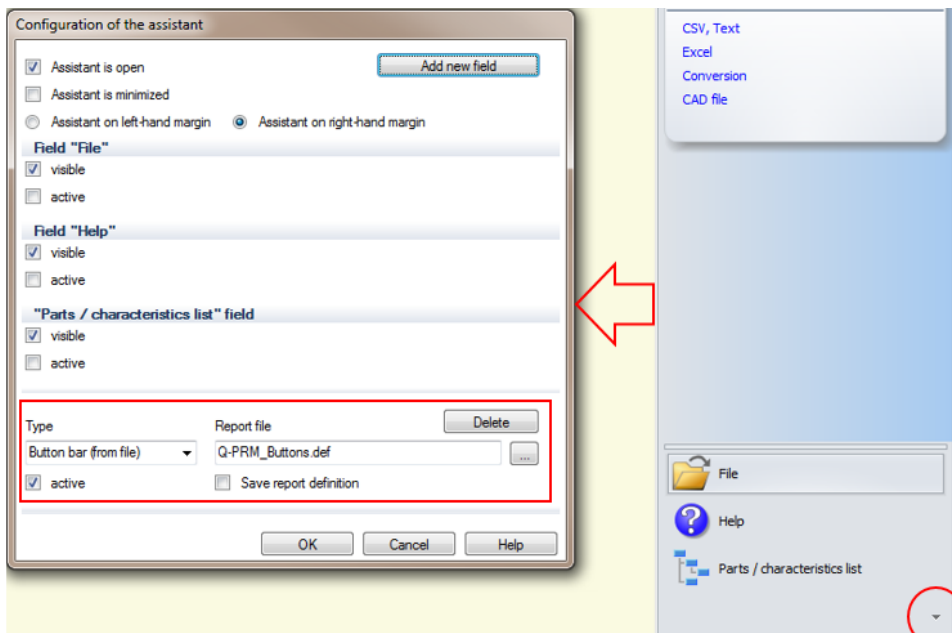
The button bar applied in qs-STAT in the Process capability Analysis module is stored in the QSSTAT2000.INI.

```
ButtonPanelDefFile_PC=C:\Q-DAS\V_11\CommonFiles\Program\Reports\DIN_A4\PC\Steps_PC_Vorlage.DEF
```

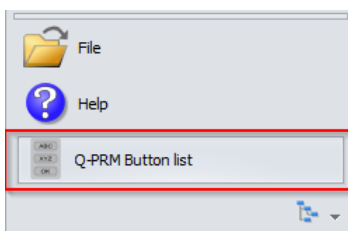
In case all users apply the same QSSTAT2000.INI, the button bar will be available and displayed at any workstation. However, any workstation that does not apply the same QSSTAT2000.INI does not contain this entry in the respective INI file and the button bar is not available to the corresponding user.

1.5.4.2 Button bar integrated into the assistant

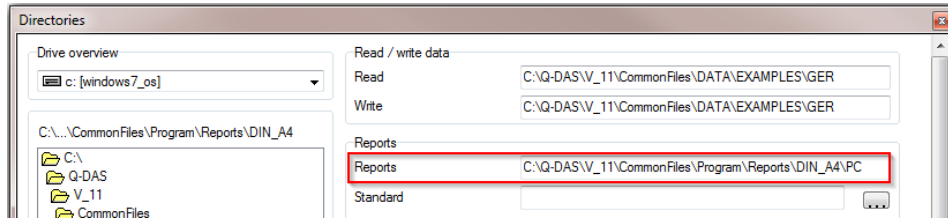
In case you integrate the button bar into the assistant, the respective information is store in the local QSTAT2000.INI and in the configuration database.



Button bar displayed in the assistant



- The application stores the path in the reports folder of the local QSTAT2000.INI containing the included *.def file.



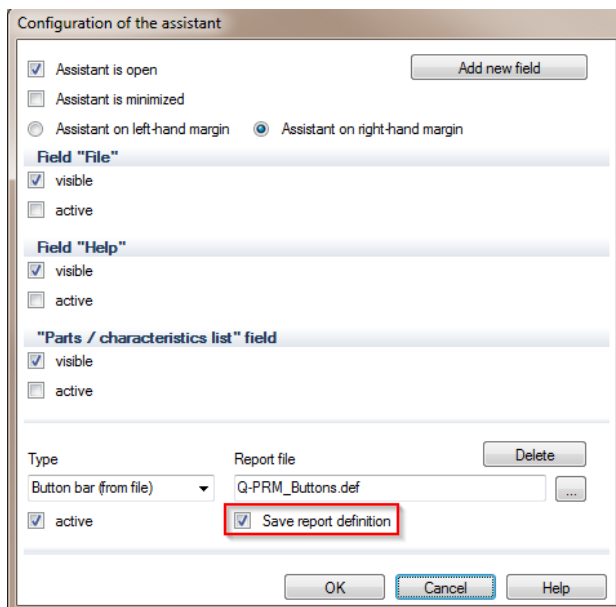
`reports_pc=C:\Q-DAS\V_11\CommonFiles\Program\Reports\DIN_A4\PC`

- The information the configuration database contains is that the button bar was activated.

In case different QSSTAT2000.INI files are applied, there might be different paths leading to the reports folder. So the button bar shown above cannot be displayed since the program is not able to find/access the respective *.def file.

1.5.4.3 Button bar is stored only in the configuration database

Use the *Save report definition* option to integrate the button bar into the assistant. In this case, a copy of the entire report file is stored to the respective user in the configuration database. The advantage of this option is that the opportunity to work with the button bar in the assistant does not depend on the storage location of the report file. The storage location of the *.def file does no longer matter.



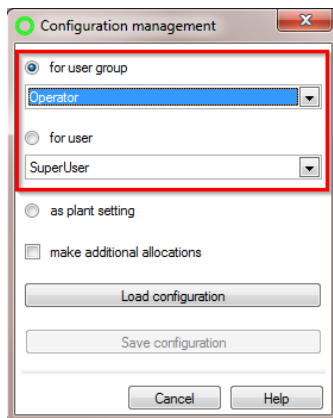
1.6 Examples of use for the configuration management

In this example of use, we assign the following settings/configurations to the “operator” user group.

1. Individual changes in the value chart (*Graphics|Individual characteristic graphics|Value chart*)
2. Activate the respective option under *File|Configuration|General setting*.
3. Adopt the “new” value chart in the “summary/input 10” graphic in procella.

1.6.1 Individual changes in the value chart

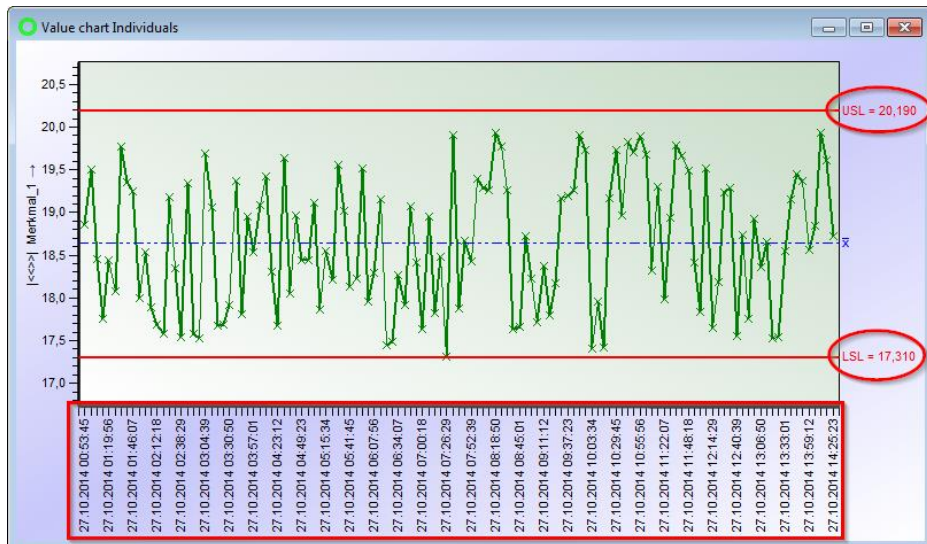
- Select File|Configuration|Additional settings|Configuration management (see chapter 1.2).
- Select the user/user group to which the new graphical settings shall apply. Then click on Load configuration.



- As soon as the configuration mode is activated, the following information is displayed in the status line.

ConfigurationUser =>> Operator

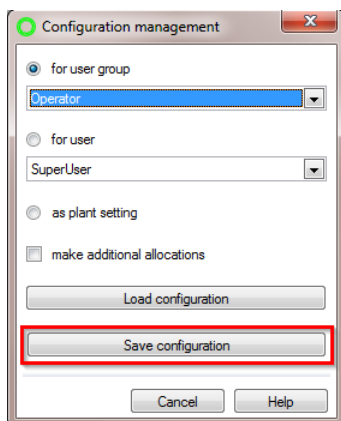
- Open the respective graphic now and adjust the respective settings (changes are highlighted in the example below).



- Store the adjusted settings by clicking *Save settings* in the *Graphical settings* tab.



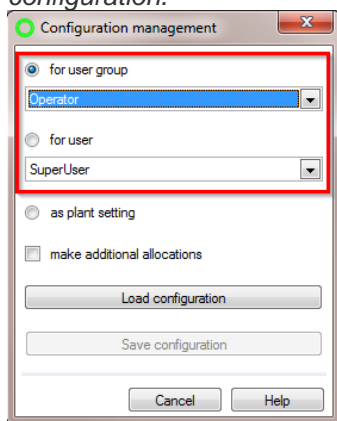
- Open the configuration management once again and select *Save configuration*.



We recommend you only to store the configuration you loaded in the configuration management before.

1.6.2 Activate the respective option in the General settings dialog box

- Select File|Configuration|Additional settings|Configuration management (see chapter 1.2).
- Select the user/user group to which the new graphical settings shall apply. Then click on *Load configuration*.



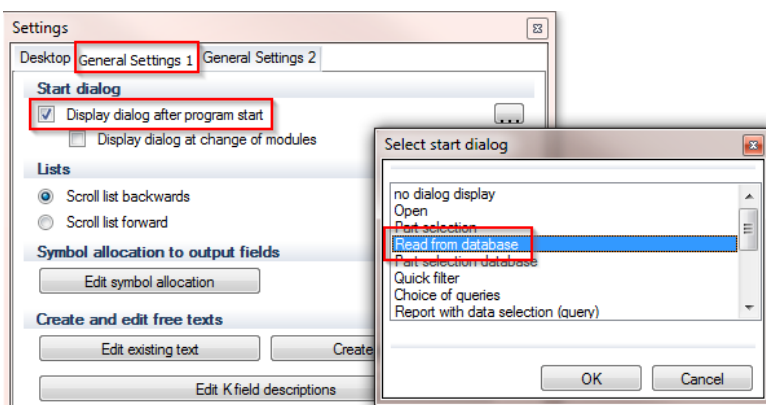
- As soon as the configuration mode is activated, the following information is displayed in the status line.

ConfigurationUser =>> Operator

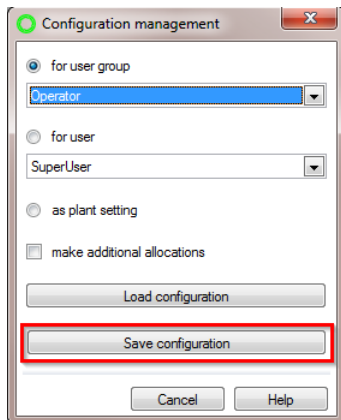
- Select File|Configuration|General setting



- Activate the following option.



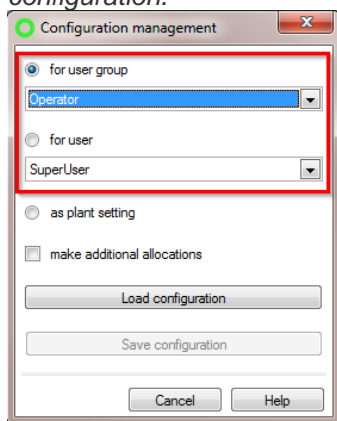
- Open the configuration management once again and select *Save configuration*.



- Due to the option activated under *General setting*, the “Read from database” window is automatically displayed to the single user or the users of a user groups when they start the program.

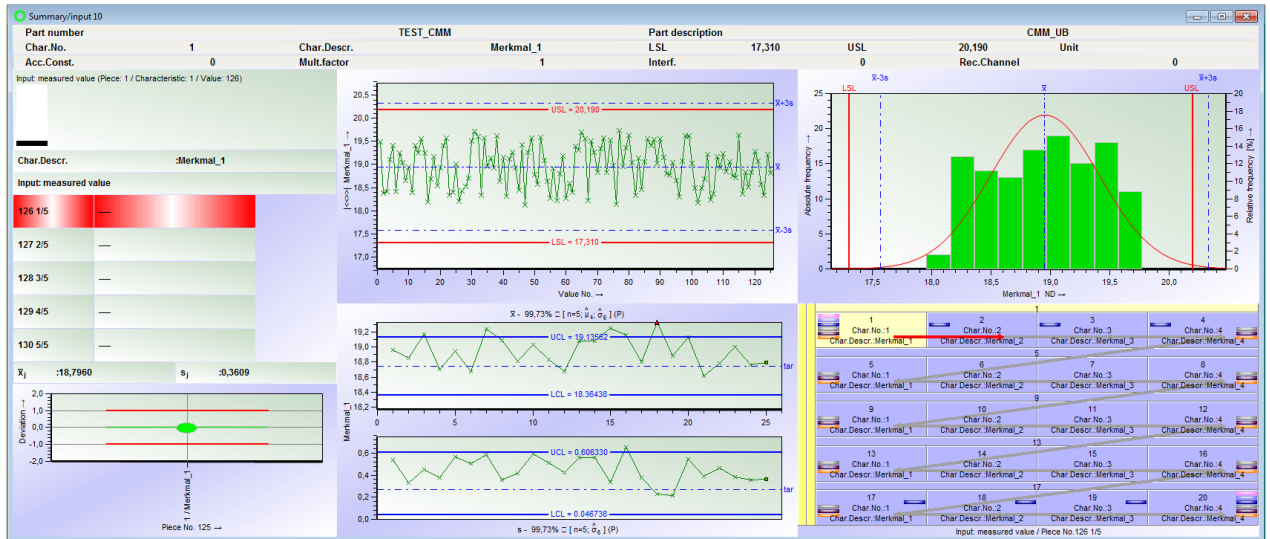
1.6.3 Adapting the summary/input 10 mask in procella

- Select File|Configuration|Additional settings|Configuration management (see chapter 1.2).
- Select the user/user group to which the new graphical settings shall apply. Then click on *Load configuration*.



- Open the summary/input 10 mask and adjust the respective settings.

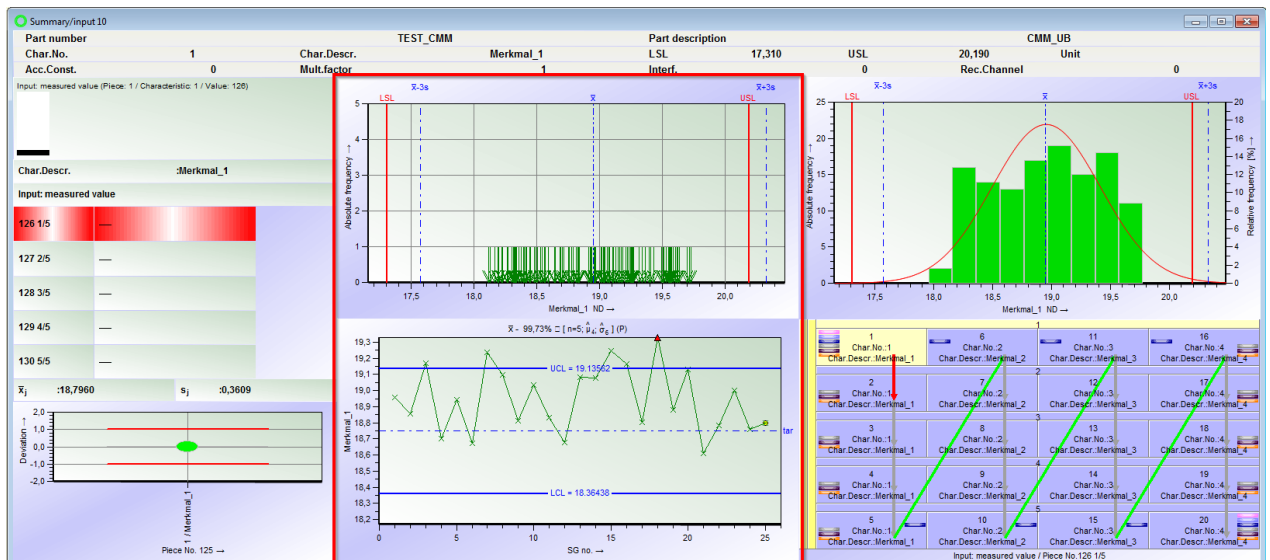
Summary/input 10 before adjusting the settings



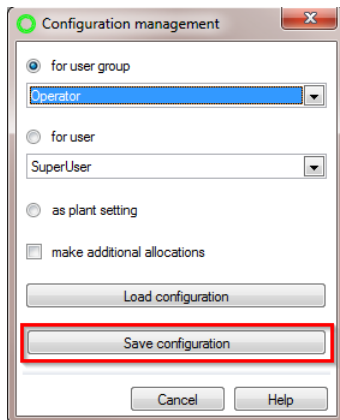
Individual changes:

- We replaced the value chart by the value plot.
- We deleted the variation chart in the QCC.

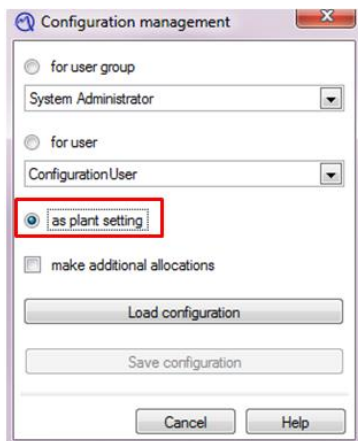
Summary/input 10 after adjusting the settings



- Open the configuration management once again and select *Save configuration*.



1.7 As plant setting option



Activate the *as plant setting* radio button to apply the settings/changes to all users that do not have any settings specific to a user or user group. The advantage of this option is that all users without any individual settings are provided with the respective settings/changes automatically. You do not have to select any specific user or user group before.

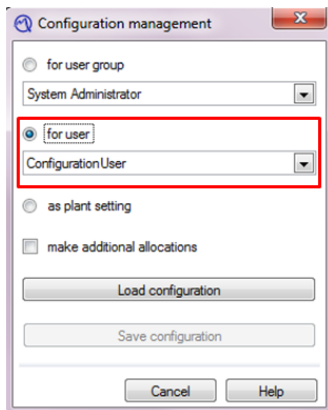
However, the general principle of inheritance still applies (see chapter 1.4).

In addition, by activating the *as plant setting* radio button, you do not have to register as a ConfigurationUser (formerly Konfigurations-User) to apply the adjusted settings automatically to all users. By enabling this option, even the SuperUser can make changes on behalf of the ConfigurationUser (formerly Konfigurations-User). You do not have to be signed in as a ConfigurationUser (formerly Konfigurations-User) in order to adjust settings for all users / user groups.

Conclusions: The option mentioned above helps you adjust general settings on behalf of the ConfigurationUser (formerly Konfigurations-User), even though you are actually not signed in as a ConfigurationUser.

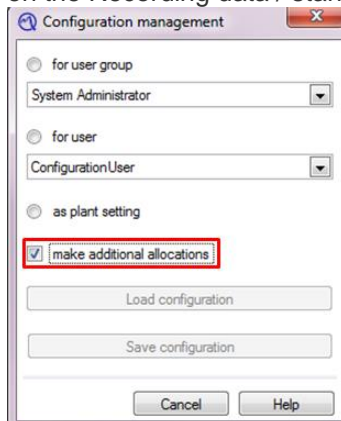
1.7.1 Approach

The approach is the same as described in chapter 1.6. The only difference worth mentioning is that the ConfigurationUser (formerly Konfigurations-User) is always selected automatically in the drop-down menu when storing the adjusted settings / changes by saving the configuration.



1.8 Make additional allocations option

Use this option to allocate adjusted settings/configurations to other users or user groups in the configuration management. However, you have to consider that you may only allocate system settings, i.e. settings adjusted on the Recording data / standard level.

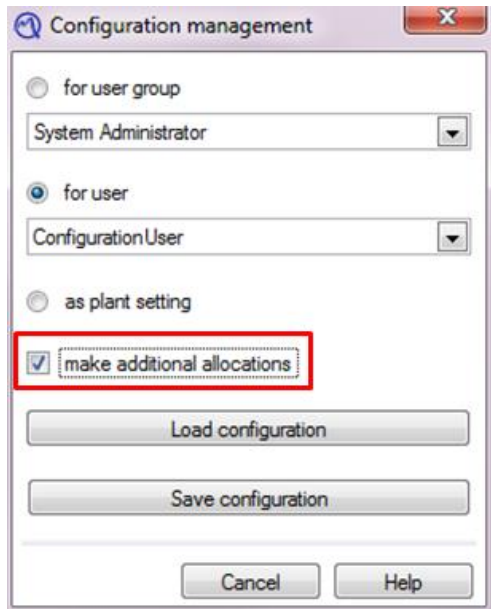


This option does not allow for the allocation of adjusted graphical settings. You cannot even allocate/apply settings that have already been stored (no one-to-one copy of group or user settings).

The approach is the same as mentioned in chapter 1.6.

- After opening the configuration management, you select the user / user group to which the configuration shall apply.
- Adjust the respective system settings and open the configuration management again.

- Check the *Make additional allocations* box. Click the *Save configuration* button to complete and store the configuration.



You have to check the *make additional allocations* box to allocate the settings by using the configuration management.

- Select the user or user group to whom you want to allocate the configuration adjusted before and click on *Save configuration*.

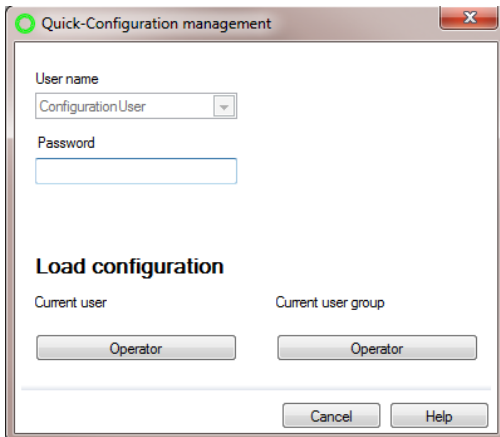


In case the *make additional allocations* is unchecked when saving the configuration, the “Configuration management” dialog box closes automatically and all settings adjusted before can no longer be allocated with the help of this dialog box.

1.9 Quick configuration

Use the <CTRL> + <Alt> + <K> shortcut to open the quick configuration management. The current user is always the user currently signed in. Under “Current user group” you find the user group of the current user.

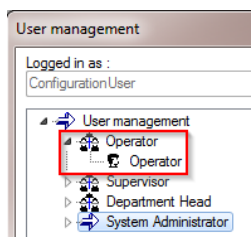
As a ConfigurationUser (formerly Konfigurations-User), the quick user management helps you adjust settings directly for the current user or user group. The storage options are the same as explained in chapter 1.5.



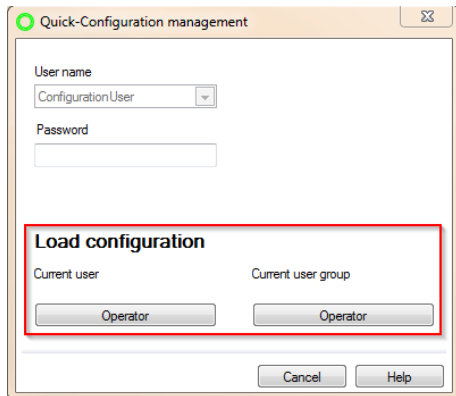
The shortcut will not work in case you are signed in as a ConfigurationUser (formerly Konfigurations-User).

1.9.1 Example of a quick configuration

- The “operator” user (member of the “operator” user group) is signed in.



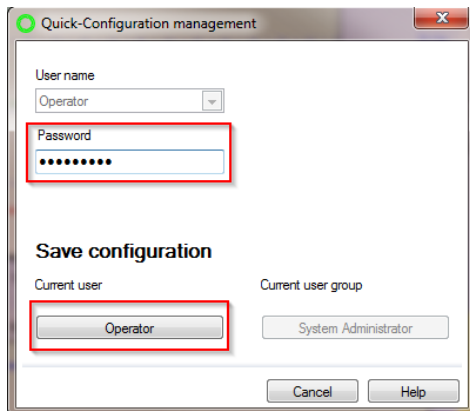
- After using the shortcut to open the “Quick configuration management” dialog box, you have to select whether you want to adjust the settings for a single user or the corresponding user group. Before clicking the respective button, enter the password of the ConfigurationUser (formerly Konfigurations-User).



- The status line shows the user to whom the configuration will apply.

ConfigurationUser =>> Operator

- Adjust the respective settings / configuration.
- Open the quick user management once again.
- Enter the password of the ConfigurationUser (formerly Konfigurations-User) and store the changes by clicking the button of the user or user group.



- Finally a confirmation prompt appears asking you whether you want to store the adjusted settings.