

Q-DAS Launcher

Configuration options

Information about this document

All rights, including translation in foreign languages, are reserved. It is not allowed to reproduce any part of this document in any way without written permission of Hexagon.

Parts of this document may be automatically translated.

Document History

Version	Date	Author(s)	Modifications / Remarks
	29.05.2022	GA	Initial Release Initial Document QDas-1120
	29.05.2022	GA	Translation
	30.08.2023	LG	New template

CONTENTS

1	Q-DAS Launcher	3
1.1	General.....	3
1.2	Operating the Q-DAS Launcher.....	4
1.2.1	View selection.....	4
1.2.2	"All Q-DAS applications".....	6
1.2.3	"Installed applications".....	6
1.2.4	"Custom application list	7
1.2.5	"Remove from list	7
1.2.6	"Restore to list"	7
1.2.7	"Change directory	8
1.2.8	"Close after Execute ".....	8
1.2.9	"Register for Q-DAS-Files "	9
1.2.10	"Support email"	10
1.3	Launcher environment.....	12
1.4	Configuration of the PRESTART_V14.INI.....	13
1.4.1	Manual addition of entries.....	13
1.4.2	Product number	16
1.4.3	Possible adjustments in the INI.....	17
1.5	Possible errors.....	19
1.5.1	Red fields	19
1.5.2	Launcher without content.....	19
1.5.3	Master.INI cannot be found	20
1.6	Creating start links on the desktop from the launcher	21
2	Q-DAS Tools Launcher	22
2.1	Tools Launcher Environment.....	22

1 Q-DAS Launcher

1.1 General

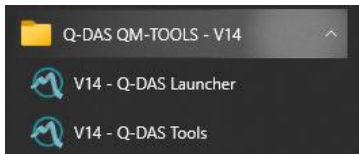
Again and again, requests were made to the hotline to open *.DFQ files either with qs-STAT, solara.MP or another product. Unfortunately, only one application can be linked to a file type in the operating system, which is opened when files of this type are double-clicked. For this reason, the Q-DAS Launcher was developed.

This can be linked to the *.DFQ and *.DFD files during installation - or subsequently. In this way, a Q-DAS product can be specifically selected with which the data is to be analysed.

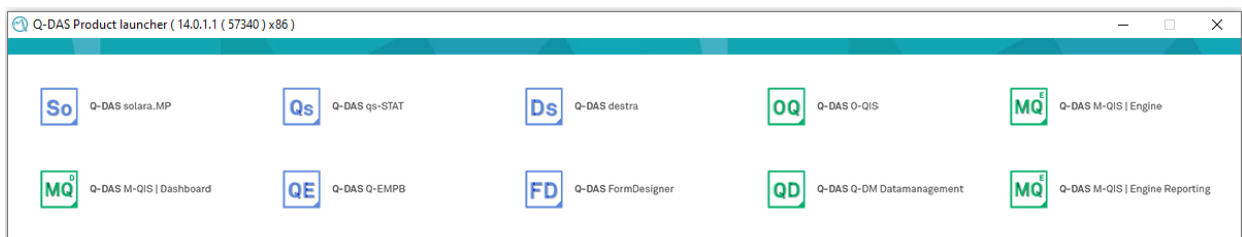
In addition, the Q-DAS Launcher is the central launch platform for starting the various products, selecting a different release per product, or starting all administrative products in the Tools Launcher since version 13.

1.2 Operating the Q-DAS Launcher

After installation, the shortcut "Q-DAS Launcher" is available in the start menu.



To start the Q-DAS Launcher, press the shortcut.



The launcher can be started directly (e.g. via Autostart or the menu) or - if it has been linked to Q-DAS files - by double-clicking on a *.DFD or *.DFQ file.

Via the right mouse button in the launched launcher, the behaviour and the display are adjusted and a subsequent registration of the file extensions is made possible.



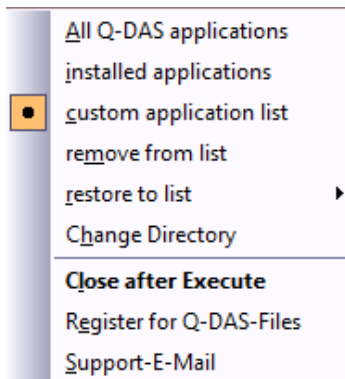
This is always possible, regardless of the user, as the launcher does not perform any authentication.

The launchers do not have access to the text database. Therefore, all dialogues are basically only available in English.

1.2.1 View selection

To be able to configure the launcher and its view and operation, go to the open Q-DAS Launcher with the right mouse button.

The following selection items are available for this purpose:



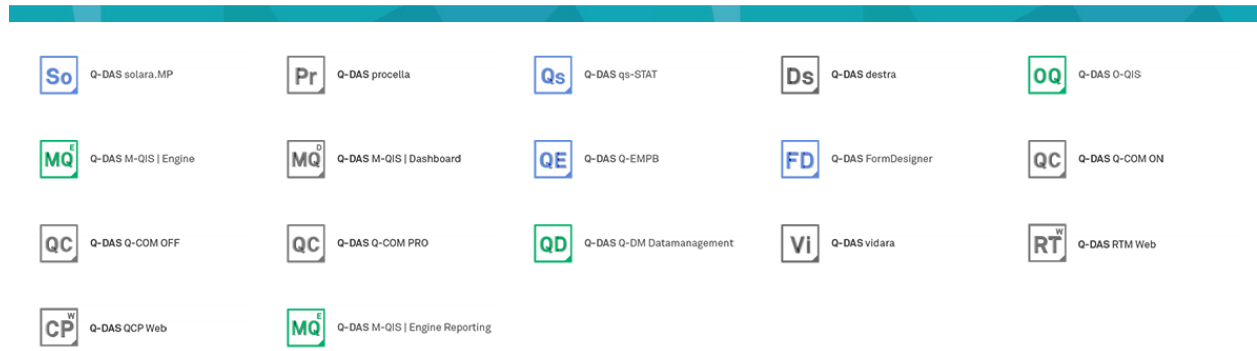
The following options are available as a listing:

All Q-DAS applications	View of all products that may be installed	show_all_exe_free=0
Installed applications	View all licensed products	show_all_exe_free=1
Custom application list	View of all active products in PRESTART_V13.INI	show_all_exe_free=2
Remove from list	Removes a product from view	
Restore to list	Restores a removed product	
Change directory	Update to desired version	
Close after Execute	Closes the window after an application has been selected and started.	
Register for Q-DAS-Files	Direct reading of the file when opening the desired product	
Support email	Sends an e-mail with the available information to the hotline	

1.2.2 "All Q-DAS applications"

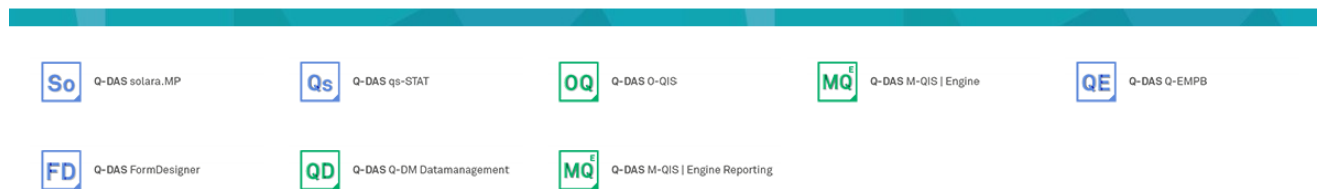
All Q-DAS products that **can be** installed are displayed.

Grey buttons show that the product does not have a licence in the licence database used or has not been installed.



1.2.3 "Installed applications"

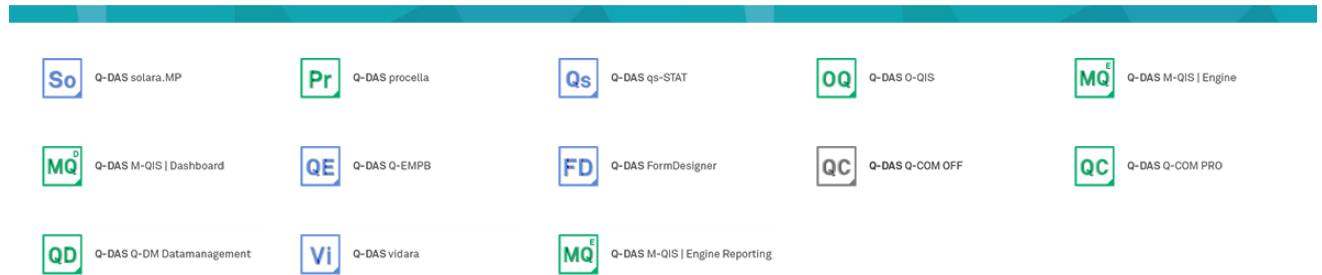
All products for which a licence exists (in the configuration database) are shown as buttons. This therefore corresponds to the installed applications.



Buttons shown in grey indicate that the software is installed but no licence is available or the entry in PRESTART_V13.INI has been deactivated(!!).

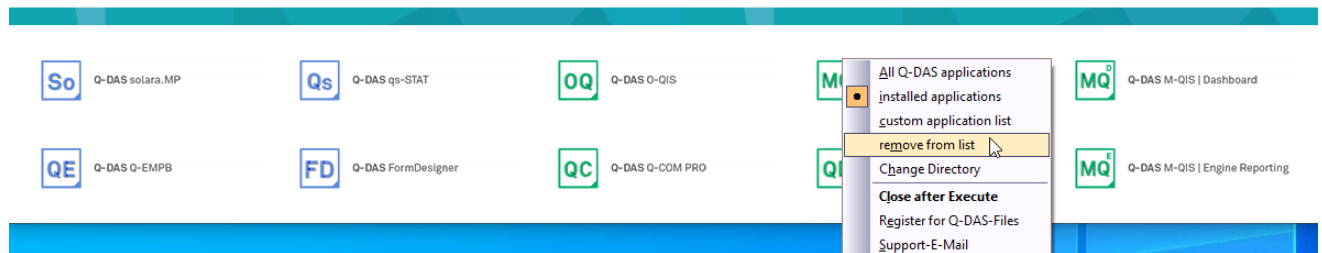
1.2.4 "Custom application list"

Only those products are displayed that are entered in PRESTART_V14.INI. For this, the programme files must exist and licences must exist. A check whether licences are still available from the registered licences does not take place!



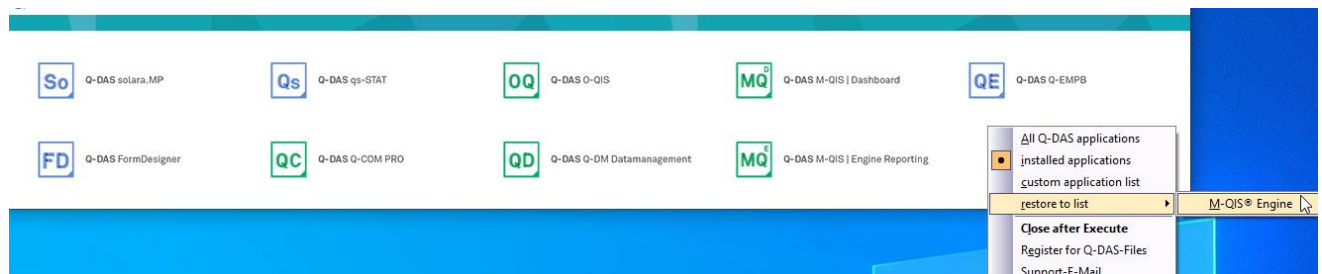
1.2.5 "Remove from list"

Right-click on the launcher to remove the products you do not want from the view.



1.2.6 "Restore to list"

With a right click on the launcher, the removed products can be included in the view again and the original view is restored.

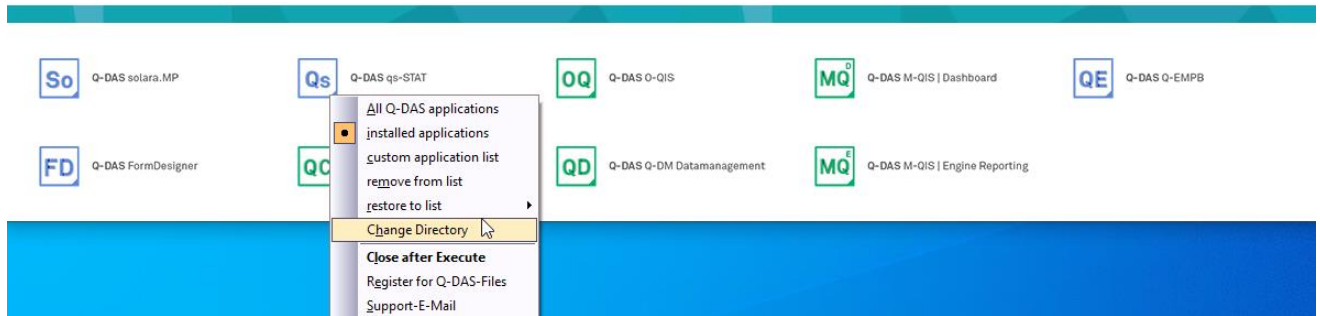


1.2.7 "Change directory

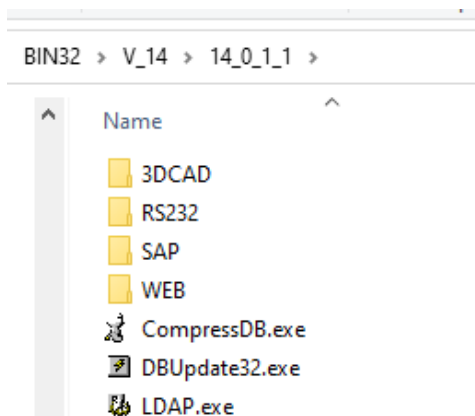
If a new version is available for testing, for example if a new minor release or a patch has been redistributed, the client can be adapted manually via the "Change directory" function.

For this purpose, the new version is downloaded from the homepage.

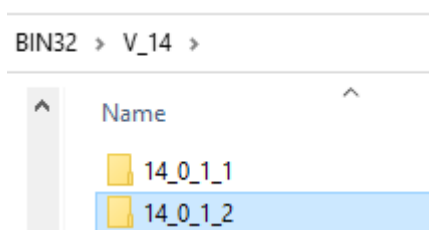
Now the desired version can be selected by pressing the right mouse button on the respective product.



A window opens and shows the current path to the minor release:



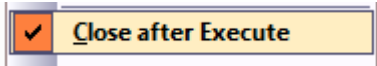
In this folder, go up one folder and mark the new version there and confirm this with "Select folder".



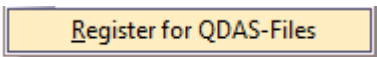
This means that the new version is available and will be used accordingly when the product is executed.

1.2.8 "Close after Execute "

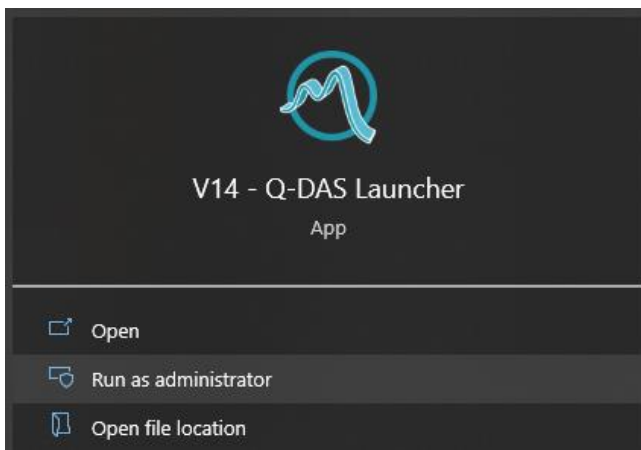
If the option is active (ticked), the launcher is closed again after the product has been selected. If the option is deactivated, the launcher remains open until it is closed manually.



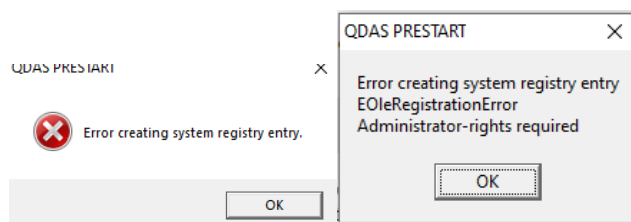
1.2.9 "Register for Q-DAS-Files "



The file extensions DFQ or DFD/DFX are assigned to a programme (e.g. qs-STAT or the launcher) in local installations. This assignment can be lost if changes are made to the system. With "Register for Q-DAS Files" the registry entries are written that are needed for starting the launcher as a standard application. Therefore, administrator rights are mandatory for this function, e.g. by right-clicking on the launcher shortcut:

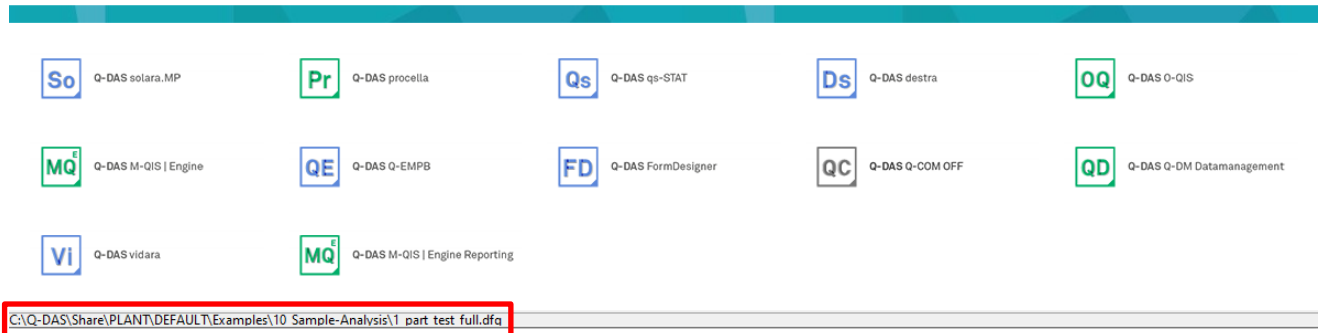


Without the execution with administrator rights, the following error messages appear



The Windows start entries for .DFQ and .DFD are rewritten to the launcher:

Double-click on *.DFQ file opens QDAS_PRE_START.EXE and the file name is transferred to the product:



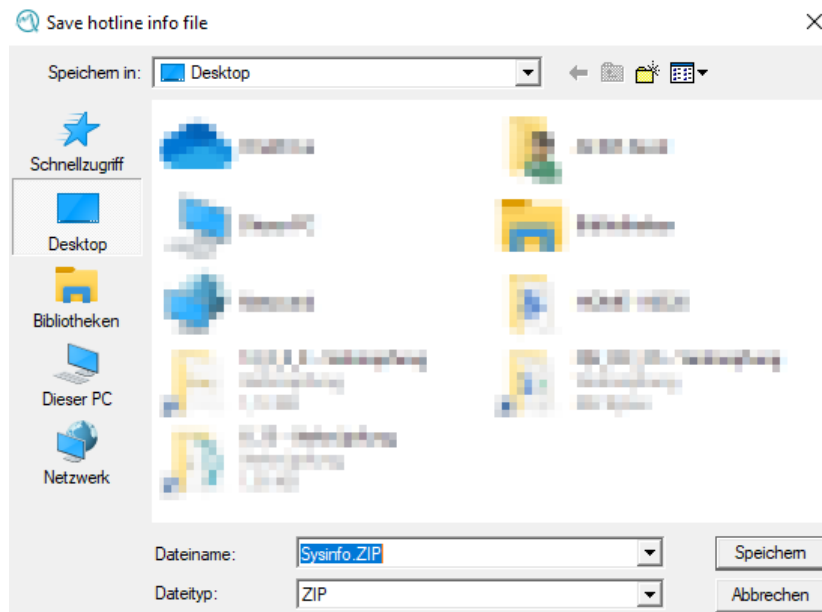
When the selected product is started, the file is read in (here 1_part_test_full.dfq) and the user can select the application to open.

1.2.10 "Support email"

If the software cannot be started, it is possible to send an e-mail with the available information via this function.

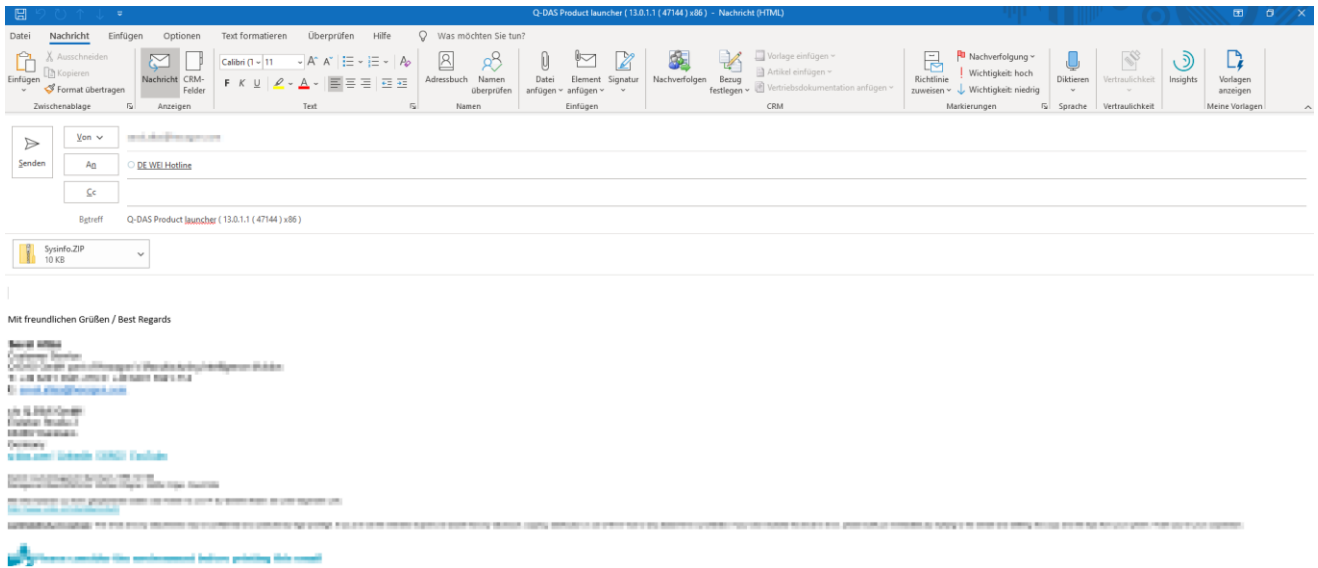
By pressing the right mouse button on the launcher, the window with the file "Sysinfo.ZIP" opens.

This can now be saved and sent by e-mail directly to the Q-DAS hotline. hotline.qdas.mi@hexagon.com directly by e-mail.





After saving, the e-mail with the attached file appears immediately.



Contents of the ZIP file:

- Name
- FILEDAC.INI
- PRESTART_V13.INI
- startparam.txt
- V13_MASTER.INI

The ZIP file contains important information that can give the Q-DAS hotline a quick overview of the current software situation.

1.3 Launcher environment

The launcher needs a certain environment to function. The explanation applies to all types of installation. Special types of installation are not explicitly explained here, but work analogously (ACLP, etc.).

Properties of the launcher's start link:

```
\Servername\q-das\Share\BIN32\V_14\QDAS_PRE_START.exe -l=\Servername\Q-DAS\Share\INI\DEFAULT\V_14\V14_MASTER.INI
```

The EXE is started with the Master.INI. The PRESTART.INI is searched for in this Master INI in order to generate the view from it.

For each local installation or client, the respective Master.ini and Prestart.ini are available.

1.4 Configuration of the PRESTART_V14.INI

This INI is written automatically during installation. Depending on the desired appearance and function, this file can be adapted.

1.4.1 Manual addition of entries



It is recommended to write the example entries from this document manually in Notepad, as they may be rewritten or punctuation marks may be incorrect or not transferred when copying.

In PRESTART_V14.INI you can also call up other software products, paths and files (PDF/Doc/etc.). These are entered in a separate section. Example:

```
[NOTEPAD]
EXE="%windir%\notepad.exe"
PIC="C:\Q-DAS\Share\PLANT\DEFAULT\Graphics\Symbols\boxplot.bmp"
```



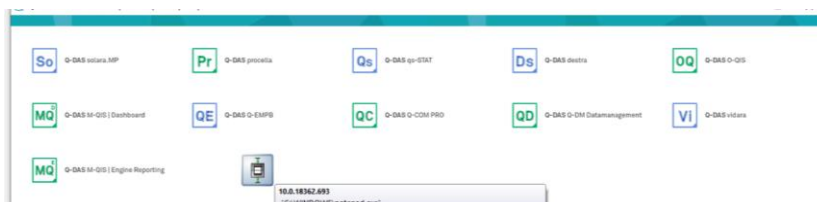
Make sure that the corresponding file / image / EXE is located on the respective path.

When a DFQ file is double-clicked, it is called and given as a parameter to the file to be started. In this example, Notepad will then open the DFQ file. This only works if the launcher opens when the DFQ file is double-clicked (see 1.2.9).

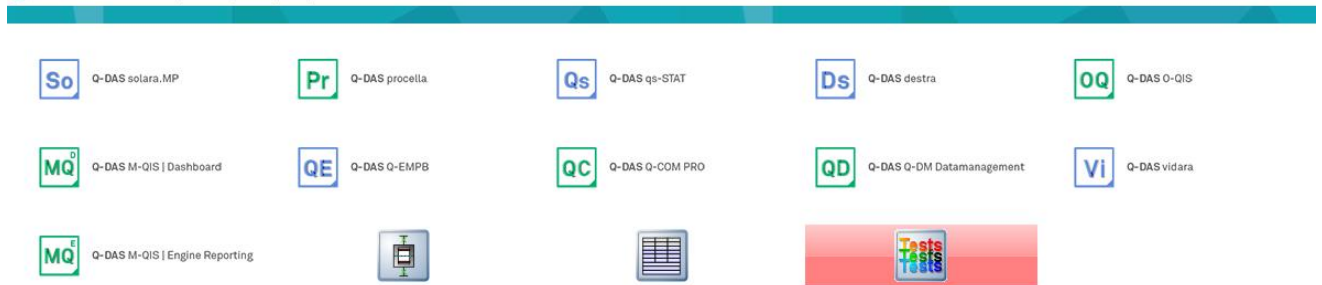
EXE= is the file to be executed. This can also be a PDF, a Word document or a directory that is to be opened with the Explorer.

PIC= is an image that must be included in the launcher. This is necessary so that the included file can also be displayed.

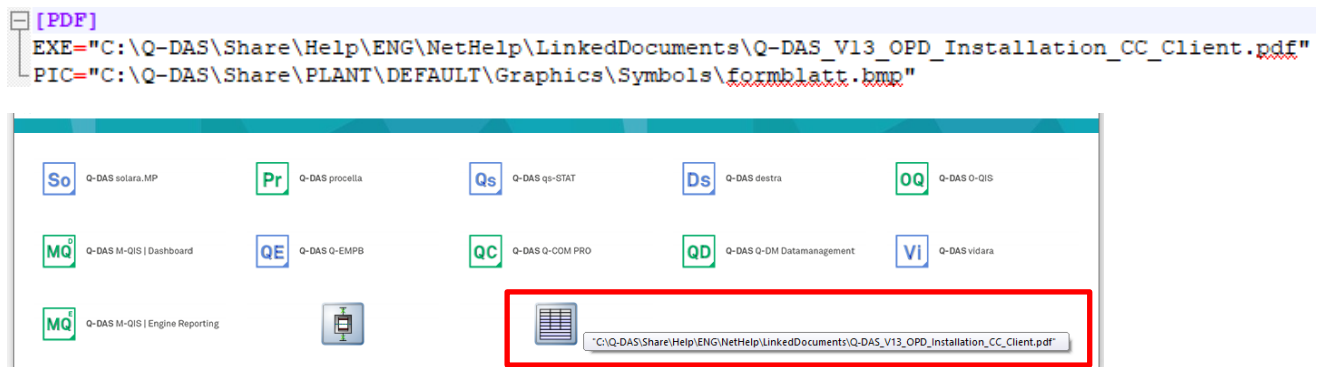
Make sure that the image fits well into the launcher in terms of format and file size. When you move the mouse over the image, the path of the stored EXE appears.



When starting, the launcher checks whether the content "EXE=" exists. If not, the button is displayed in red and does not work.

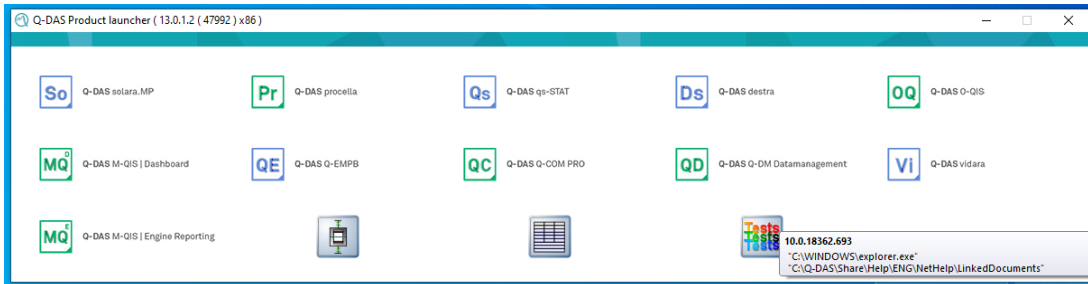


Here, a PDF file with an image is included as an example:



Here, a directory is included as an example:

```
[Manuals]  
EXE="%windir%\explorer.exe" "C:\Q-DAS\Share\Help\ENG\NetHelp\LinkedDocuments"  
PIC="C:\Q-DAS\Share\PLANT\DEFAULT\Graphics\Symbols\testverfahren.bmp"
```



1.4.2 Product number

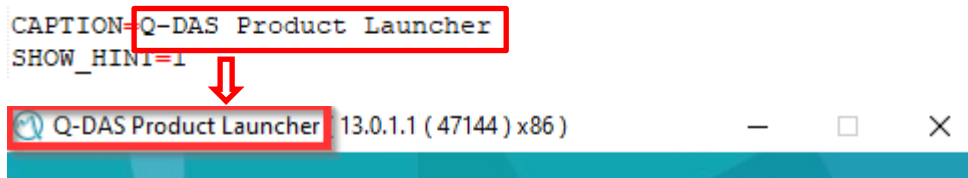
Here you will find a list of Q-DAS product numbers (as of 2020-03-31):

Product number	Product
200	solara.MP
201	Procella
202	qs-STAT
203	Destra
204	O-QIS
205	M-QIS Engine
206	M-QIS Dashboard
207	Q-DBM
208	Q-PRM
209	Q-EMP
210	Q-FD
223	Q-Upload
227	Vidara
244	RTM

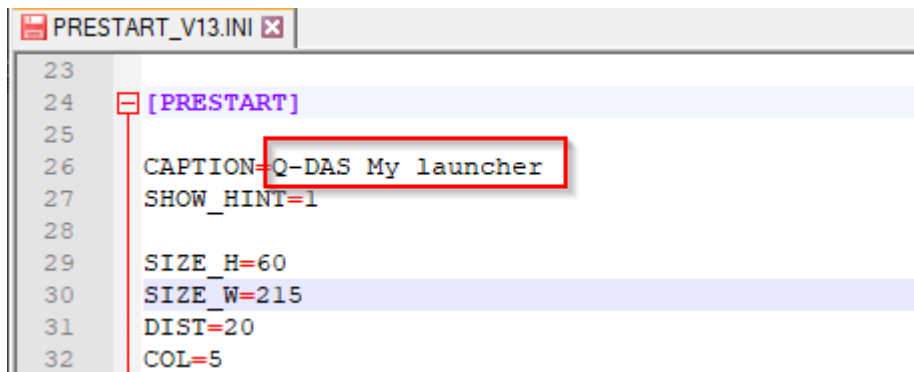
1.4.3 Possible adjustments in the INI

The INI can be used to define the **title of** the launcher.

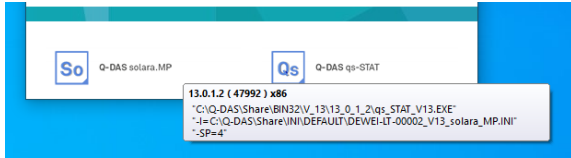
The default title is "Q-DAS Product Launcher".



If you want to change this, it is done in the ...Prestart.INI.



It is also possible to determine whether the information on the version being executed appears in the launcher.



This is done by entering HINT. If a "1" is entered here, the respective information appears when the mouse is moved over the product.

```

CAPTION=Q-DAS Product Launcher
SHOW_HINT=1
  
```

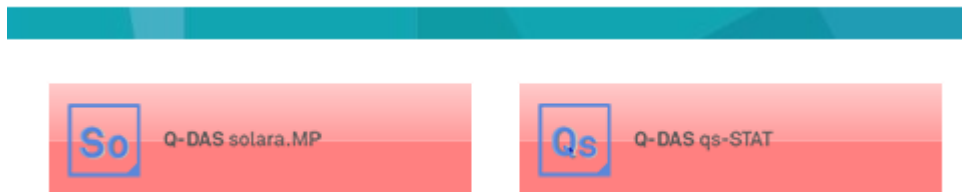
This can be switched off by entering "0".

1.5 Possible errors

1.5.1 Red fields

If the application does not exist, the folder must be selected again.

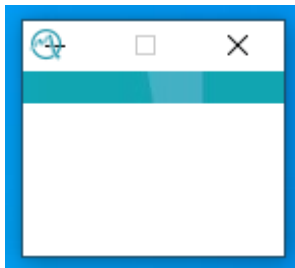
This is done by selecting "Change Directory". See also the chapter "Change Directory".



If the folder selection is not possible, the key user should be informed of this or the Q-DAS hotline should be contacted with this information - including PRESTART-INI.

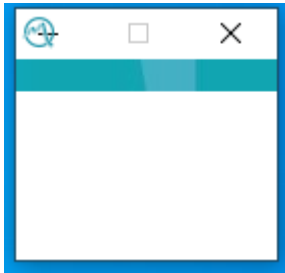
1.5.2 Launcher without content

If the Prestart.INI cannot be found, i.e. if it has been renamed and should therefore no longer be functional - this can be the case, for example, with a virus scan - then the launcher window appears without content:

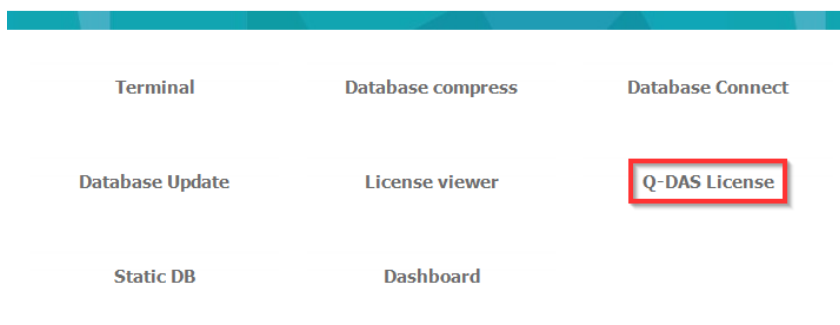


If the Prestart.INI is corrected, the launcher is filled with content again.

Another error, that an empty window appears when starting the launcher, may be that no licences are installed.

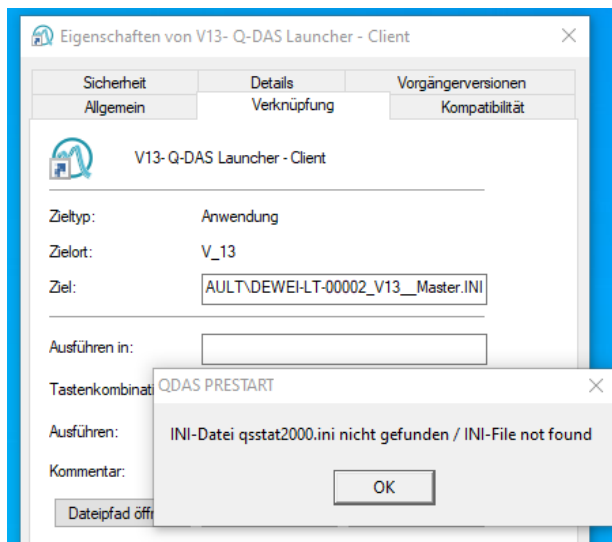


To check this, the Q-DAS License Tool is started via the Tools Launcher.



1.5.3 Master.INI cannot be found

If the Master.INI has been renamed, it cannot be accessed and the following error message appears.



1.6 Creating start links on the desktop from the launcher

Especially when only one product is installed on a workstation (e.g. O-QIS or procella), the question of a direct start link on the desktop comes up again and again. This would save having to start the launcher first in order to then start the one product that is exclusively in the launcher.

However, since a start link on the desktop cannot be updated because it has a fixed reference to the application used (the folder of the minor release), the following option was enabled in the launcher.

The following entry is written into PRESTART_V14.INI:

```
[PRESTART]
```

```
CAPTION=Q-DAS Product launcher
```

```
SHOW_HINT=1
```

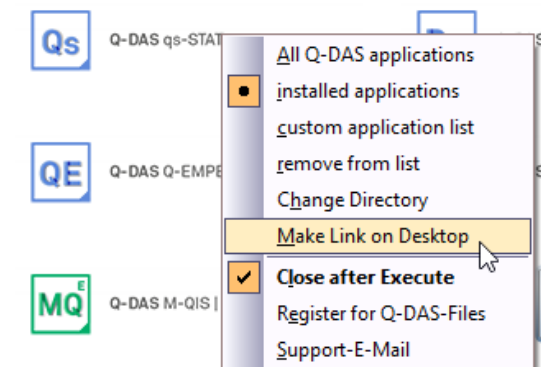
```
CreateLink=1
```

```
SIZE_H=60
```

```
SIZE_W=215
```

```
NTCT=20
```

This provides the option of creating a start link on the desktop from the selected tile:

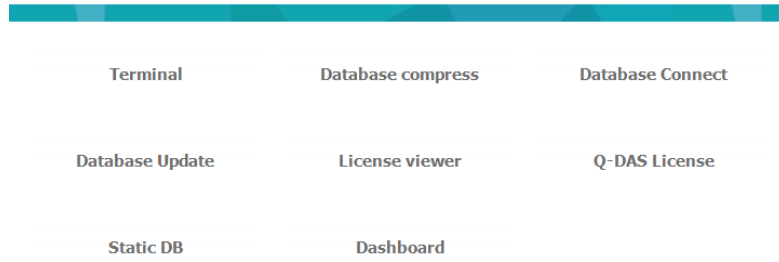


Since, as already mentioned, the start link has a fixed path, the existing start link can be deleted and a new one created after an update.

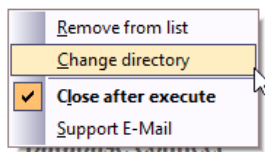
2 Q-DAS Tools Launcher

From V13 onwards there is the Tools Launcher. This is intended for all administrative activities, the import of licences, updates and database processing.

The Tools Launcher is only available for server installations or local installations. Computers that only have a client installed do not have the Tools Launcher.



With a right click on the opened Q-DAS Tools Launcher the following selection window appears:



The functionalities are the same as for the launcher.

2.1 Tools Launcher Environment

The Tools Launcher does not access a Master.INI, but goes back to a Tools.INI.

Properties of the start link of the Tools Launcher:

```
\Servername\q-das\Share\BIN32\V_14\QDAS_PRE_START.exe -I=\Servername\Q-Das\Share\INI\DEFAULT\V_14\V14_Tools.INI
```

Now look for PRESTART_TOOLS_V14.INI to start the Tools Launcher.