



**HEXAGON**

---

# **Ribbon**

FAQ

FAQ  
23 August 2021  
Created with Version 13.0.4.5

## Information about this document

All rights, including translation in foreign languages, are reserved. It is not allowed to reproduce any part of this document in any way without written permission of Hexagon.

Parts of this document may be automatically translated.

## Document History

Version	Date	Author(s)	Modifications / Remarks
	04.08.2021	GA	
	16.08.2021	GA	Translation

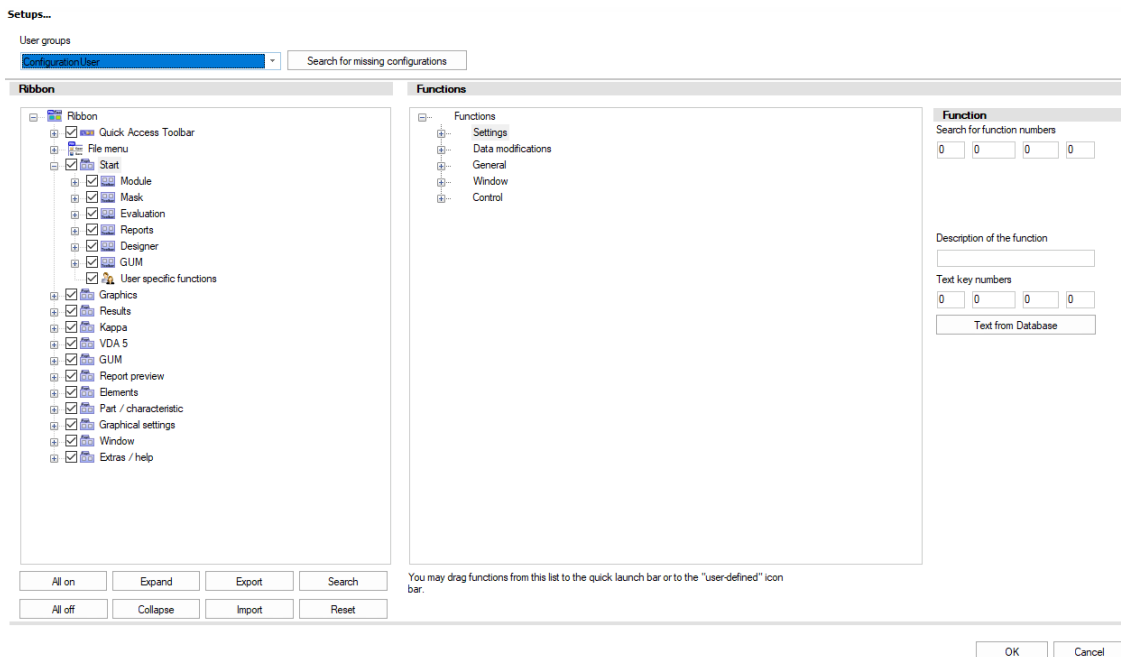
**CONTENTS**

<b>1</b>	<b>Ribbon</b> .....	<b>4</b>
1.1	Basic explanations of the ribbon .....	4
1.2	Activate / deactivate options for user groups .....	6
1.3	Set standard functions .....	8
1.4	Add further functions.....	8
1.5	Search functions .....	10
1.6	Further functions.....	11
1.7	Authorisation concept within the user administration .....	14
<b>2</b>	<b>Comparison of Ribbon bars</b> .....	<b>16</b>

# 1 Ribbon

Select *File | Configuration | Ribbon* to configure the ribbons individually or to adapt them to the requirements of the respective user group.

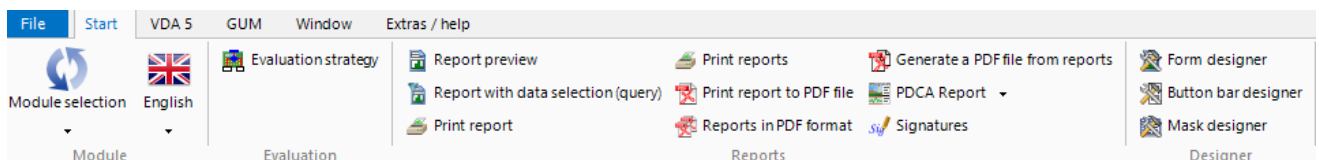
**Note:** The changes made here only apply to the users of a specific user group in the respective module of the programme used.



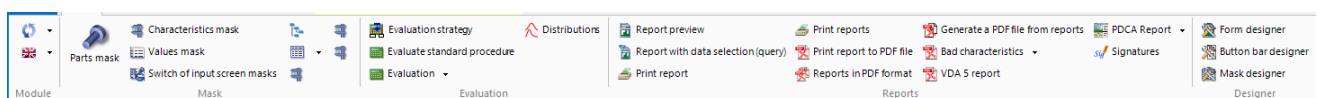
## 1.1 Basic explanations of the ribbon

The ribbon depends on the current conditions and possibilities of the application. This means that the software checks whether data is loaded and what rights the user has. The functions displayed depend on this.

Start tab WITHOUT loaded data:

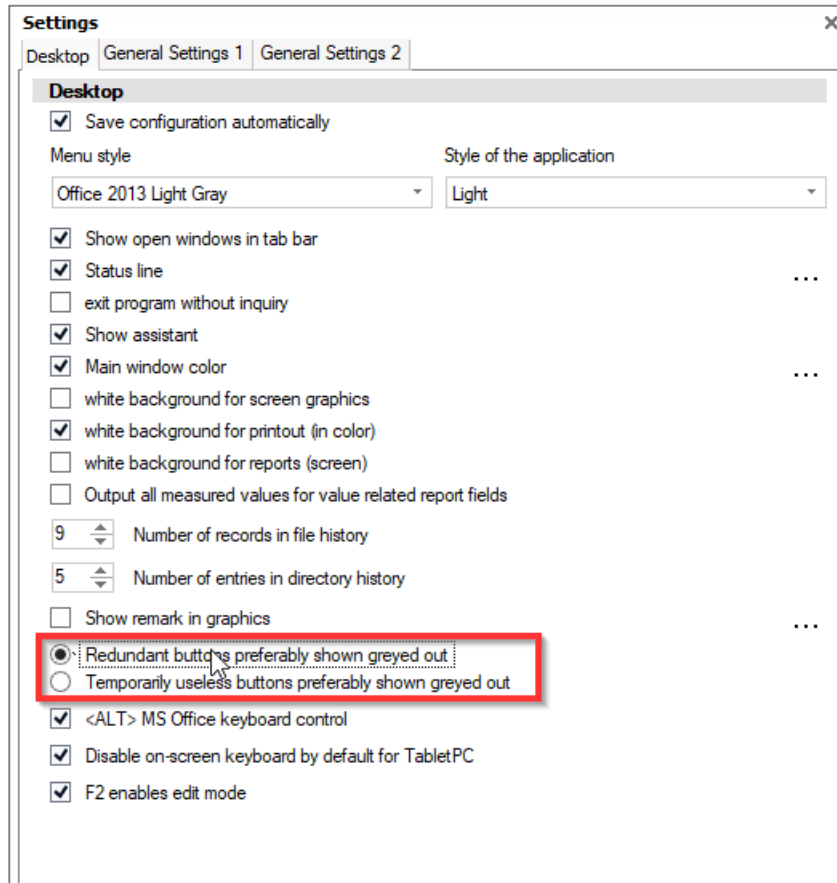


Start tab WITH data loaded:

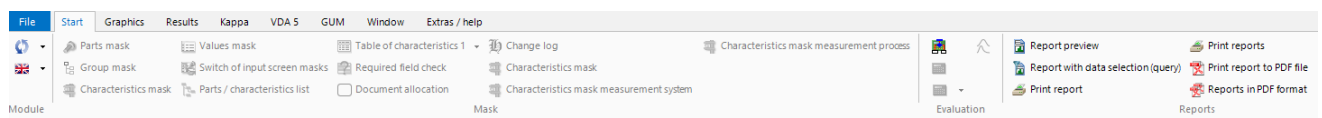


Options that are active in the ribbon configuration but currently without function are hidden by default.

The option can be changed under *File | Configuration | General*:



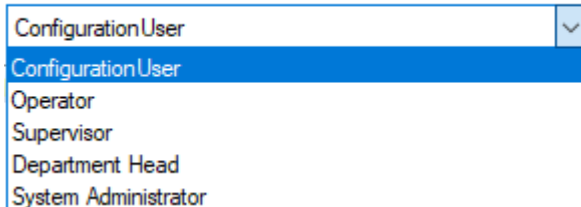
Here the option "Redundant buttons preferably shown greyed out" is set, but without loaded data.



## 1.2 Activate / deactivate options for user groups

In the "Setups..." window you can first select under "User groups" for which user group the settings made here are to apply. A selection menu is available for this purpose.

User groups



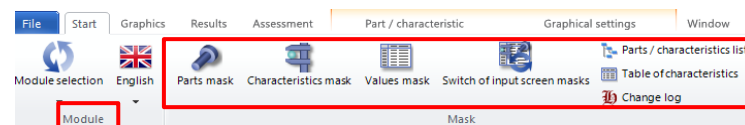
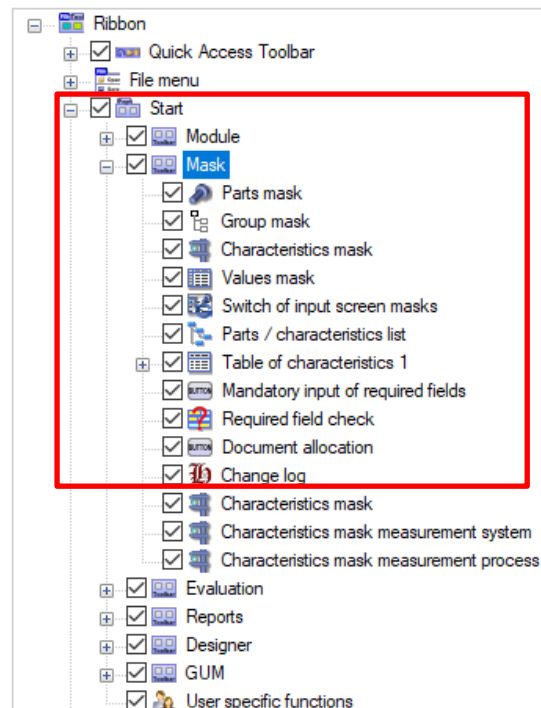
This option is only available to you if you are logged in as an administrator (e.g. ConfigurationUser or SuperUser)..

If you are not logged in as an administrator, the settings are saved user-specifically and only **apply to the user** who is logged in..

In the "Ribbon" area, a tree structure of all available menus and tabs is displayed. If you open the individual menus with the arrow, you will get the associated groups and respective options of the ribbon.

Example: In the "Start" menu you will find the "Mask" group, in which the options Parts mask, Characteristics mask, Values mask, Parts/characteristics list and Required fields Check are available.

Ribbon



All menus/tabs and options that are ticked are displayed on your programme interface, provided the user has permission to use them and the module allows this option. All those that are not ticked are never displayed on the programme interface.

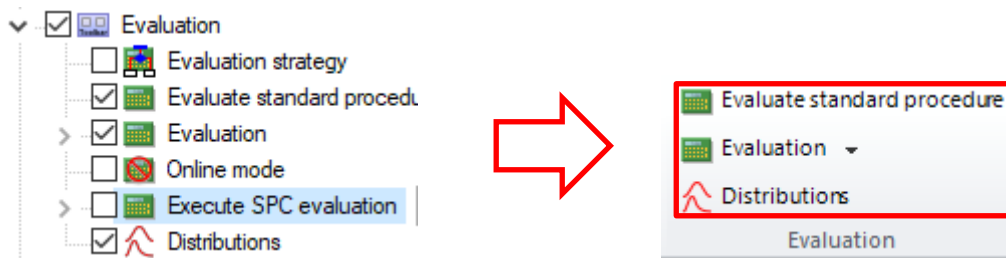


Please note that version 13 is an intelligent programme interface. Only those functions are displayed that are currently available or can be used depending on the licence.

Example: The Required fields check option is only displayed if you have opened one of the masks, lists and tables shown above, as the required fields check is only possible for these mask representations.

To hide an option on the respective programme interface, remove the tick in front of the corresponding entry in the tree structure. This also allows you to create user-specific programme interfaces, for example, so that certain user groups can only use certain functions.

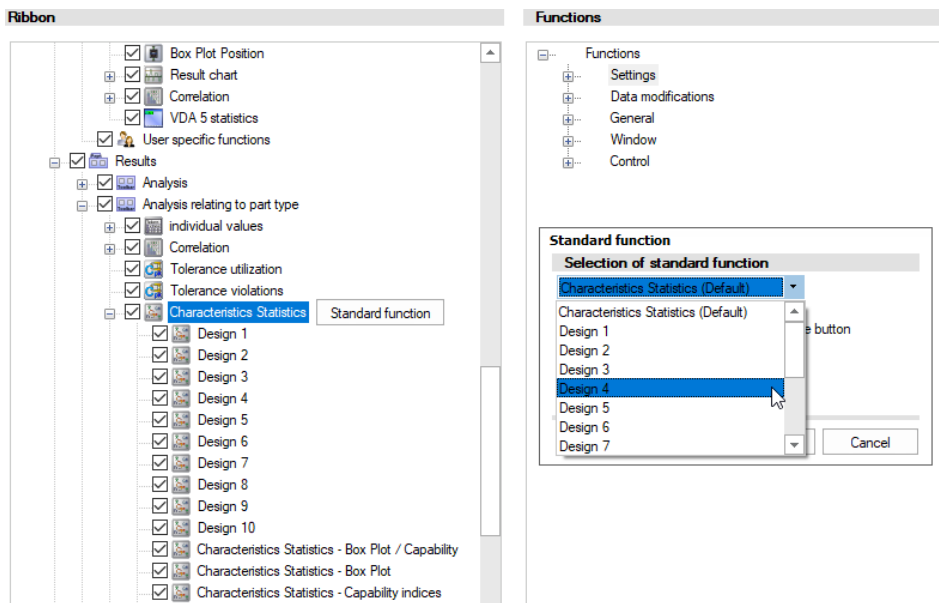
Example: You want to allow a user group to carry out evaluations, but they should not have access to the evaluation strategy. So remove the tick in front of "Evaluation strategy" and confirm your selection with "OK".



In the group "Evaluation" the option "Evaluation strategy" is no longer displayed.

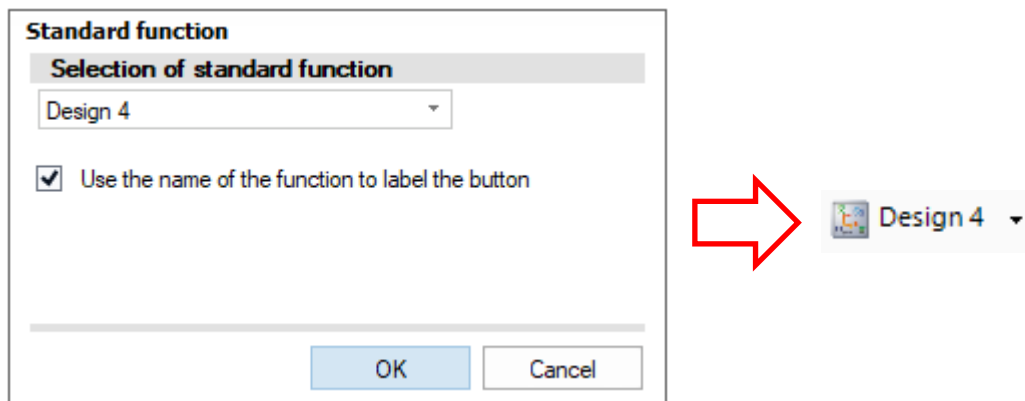
### 1.3 Set standard functions

For all graphics with sub-variants of the graphic, it can be determined which sub-graphic is to be opened by clicking on the main button.



Now, when you select the button "Characteristics Statistics", "Design 4" opens directly.

If the option "Use the name of the function to label the button" is selected, the button is also renamed to the selected function.

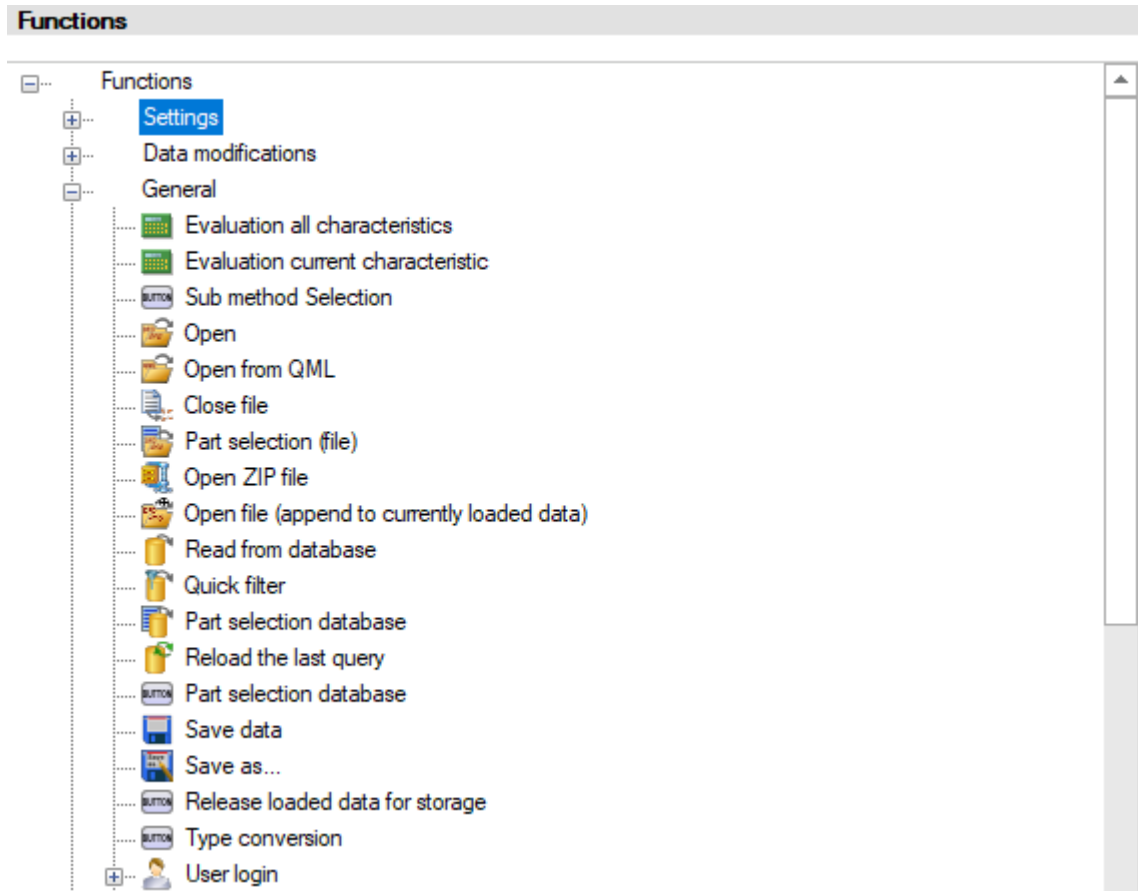


### 1.4 Add further functions

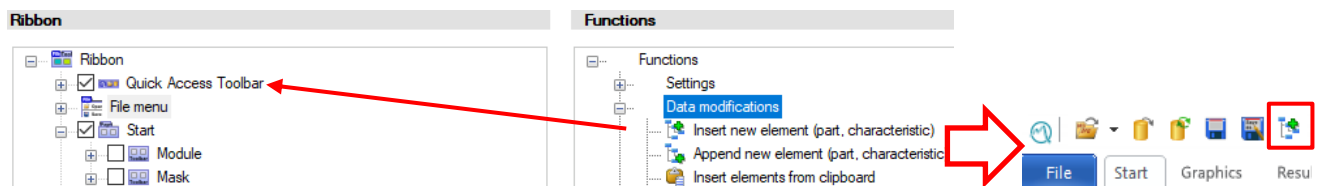
In the middle area of the "Settings..." window, further functions are available for selection, which are divided into four groups: "Data modifications", "General", "Window" and "Control". All functions that are integrated in the software as a whole and are not already included in the tree structure of the ribbon are available here.

Here, too, a tree structure opens when you click on the arrow in front of the respective group.

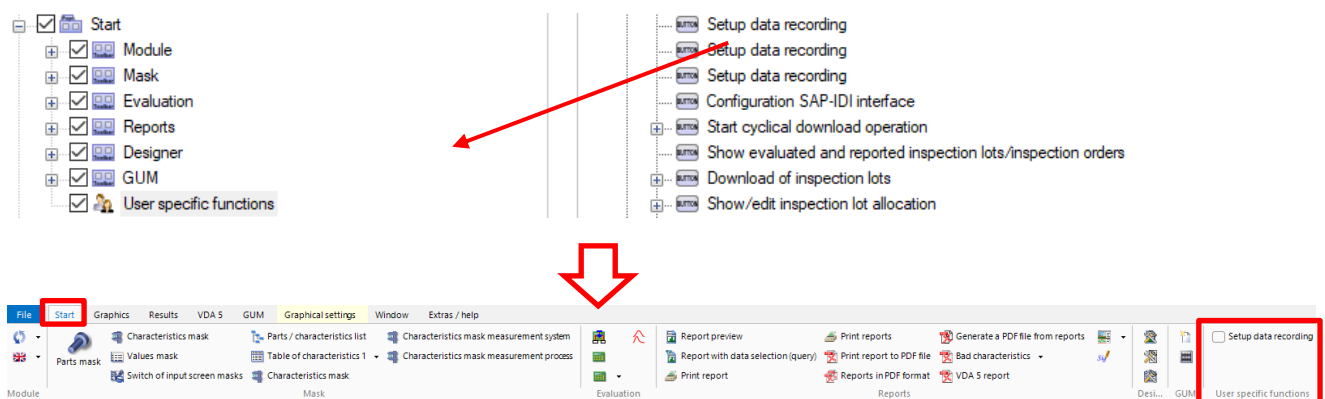




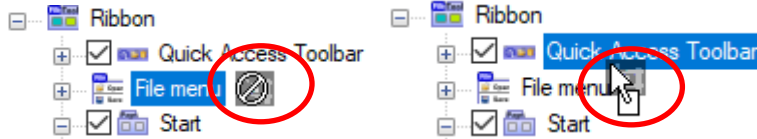
You can display all the options available here either in the quick start bar or in the tabs in the "User specific functions" group. To do this, drag and drop the desired function either onto the "Quick Access Toolbar" in the tree diagram



or under "Start" in the tree diagram on "User specific functions".



The mouse pointer also changes depending on whether you drag a function onto the "Quick Access Tollbar" or onto "User Defined Functions" or if you want to drag the function onto another tab or another group.



Drag & Drop not possible

Drag & Drop possible

Afterwards, the respective function becomes visible either in the quick start menu or in the "Start" tab under "User specific functions".

To remove one of these functions from the tree structure again, drag and drop the functions from the tree structure back into the middle "Functions" area.

## 1.5 Search functions

Each individual function has a function number. If you know this number, you can enter it in the right-hand area under "Search function number" to find the corresponding function more quickly in the middle list.

**Function**

Search for function numbers

5	9819	2	0
---	------	---	---

➔

**Functions**

- Settings
- Data modifications
- General
  - Evaluation all characteristics
  - Evaluation current characteristic
  - Sub method Selection
  - Open
  - Open from QML
  - Close file
  - Part selection (file)
  - Open ZIP file
  - Open file (append to currently loaded data)
  - Read from database
  - Quick filter
  - Part selection database
  - Reload the last query
  - Part selection database
  - Save data
  - Save as...
  - Release loaded data for storage
  - Type conversion
  - User login
  - Sign out user
  - Setup data recording
  - Setup data recording
  - Setup data recording
  - Configuration SAP-IDI interface
  - Start cyclical download operation
  - Show evaluated and reported inspection lots/inspection orders
  - Download of inspection lots
  - Show/edit inspection lot allocation
  - Finalize inspection lot / test plan order
  - Make usage decision
  - Show inspection lot status
  - Show inspection lot status

Mit Eingabe einer Funktionsnummer klappt der Funktionsbaum automatisch auf und die zugehörige Funktion wird markiert

If you prefer a text search, you can use the "Search" button.

## 1.6 Further functions

In addition, there are a further eight buttons for configuring the ribbon in the bottom left-hand corner.

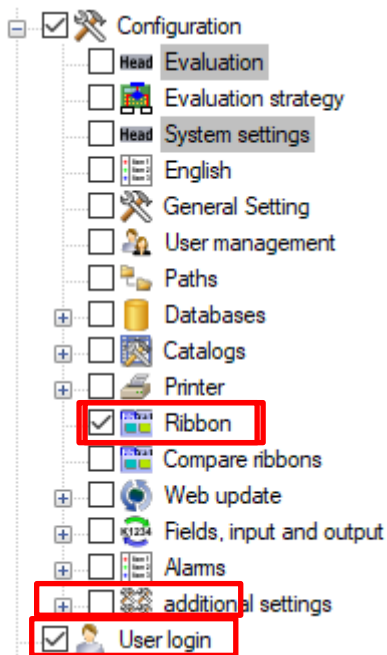


- *All on*

This button ticks all menus/tabs, groups and options in the ribbon tree structure and thus displays them on the user interface

- *All off*

This button removes the tick in front of all menus/tabs, groups and options in the ribbon tree structure. Only the option "Ribbon" and "Log on/off user" from the File menu remain activated in the tree structure and thus on the programme interface.

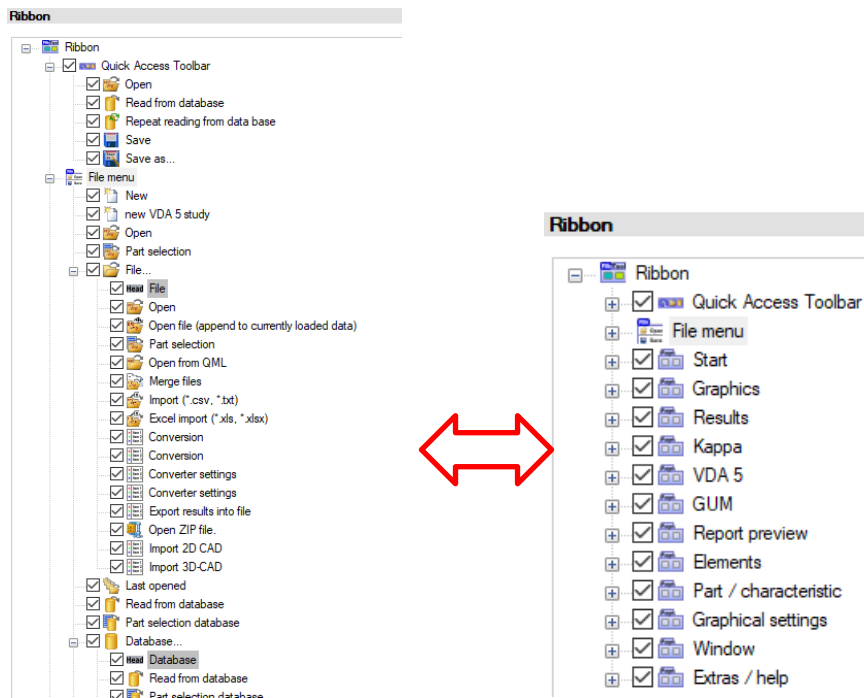


- *Expand*

With the "Expand" button you open the complete tree structure so that all menus as well as tabs are displayed with their groups and options.

- *Collapse*

Click on this button to close the tree structure so that only the individual menus/tabs are displayed.



Tree structure expanded

Tree structure collapses

After you have finished configuring the ribbon, exit the window by clicking on "OK" and the settings you have made will be saved.

If you click on "Cancel", all the changes you have made will be discarded without being saved.

- *Export*

Allows you to export the ribbon configuration just displayed, i.e. you can save it as an external file in any storage location.

- *Import*

Use this button to import an externally saved ribbon for a specific user group.



The import only takes effect if the programme and module into which the ribbon is imported matches the programme and module in which it was created. A warning message appears in the event of nonconformity.

- *Search*

Use this button to perform a text search to find a specific function in the tree structure.

Search for function ×

**What is the name of the function you are searching for?**

---

Function name  
Enter the first letter of the function you search for.

- EXB Viewer configuration
- Excel import (\*.xls, \*.xlsx)

- *Reset*

Use the "Reset" button to delete the user-specific ribbon. Confirm the option by clicking on "Yes".

After pressing this button, the respective user has either the ribbon as configured for the user group or the ribbon of the ConfigurationUser.

If the ConfigurationUser is reset, then the delivered standard is used, which is defined by the Q-DAS Customer Service.

Information ×



Do you want to reset the settings of your ribbon?

## 1.7 Authorisation concept within the user administration

There are three different ways to define the authorisation concept. The authorisations depend on whether a user has the right of "System configuration" or in the right of "Restricted system configurations" the user group rights "Configure ribbon (your own)" or "Configure ribbon for user groups":

User group  
Supervisor

Edit Numerics Database further Process Manager Description

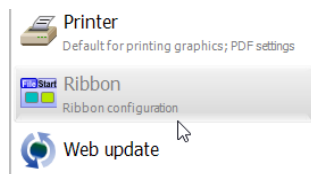
System configuration ⓘ

Restricted system configuration ⓘ

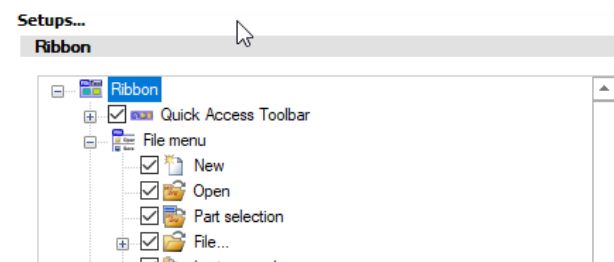
**Access levels in system configuration**

Configuration option	Access level		
	All users	Restricted system configuration	System configuration
Ribbon configuration	<input type="checkbox"/>	<input checked="" type="checkbox"/>	<input checked="" type="checkbox"/>
Configure ribbon of user groups	<input type="checkbox"/>	<input type="checkbox"/>	<input checked="" type="checkbox"/>
Edit graphic styles and configurations of info display	<input type="checkbox"/>	<input type="checkbox"/>	<input checked="" type="checkbox"/>

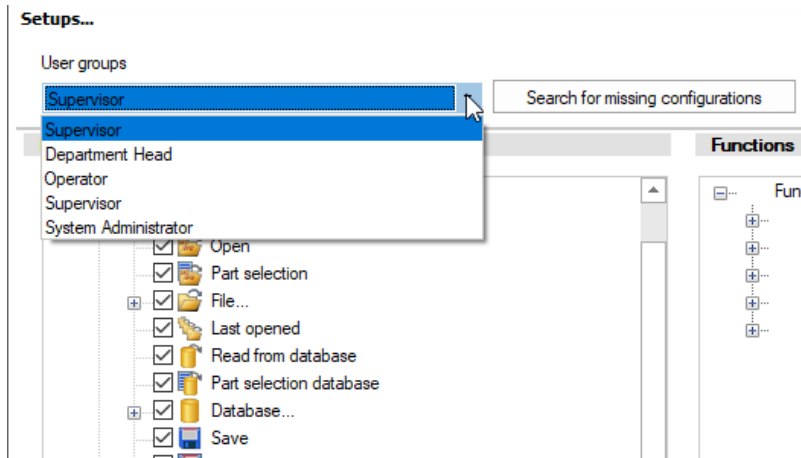
- No authorisation: The option "Ribbon" is greyed out.



- View if only the own ribbon may be configured.



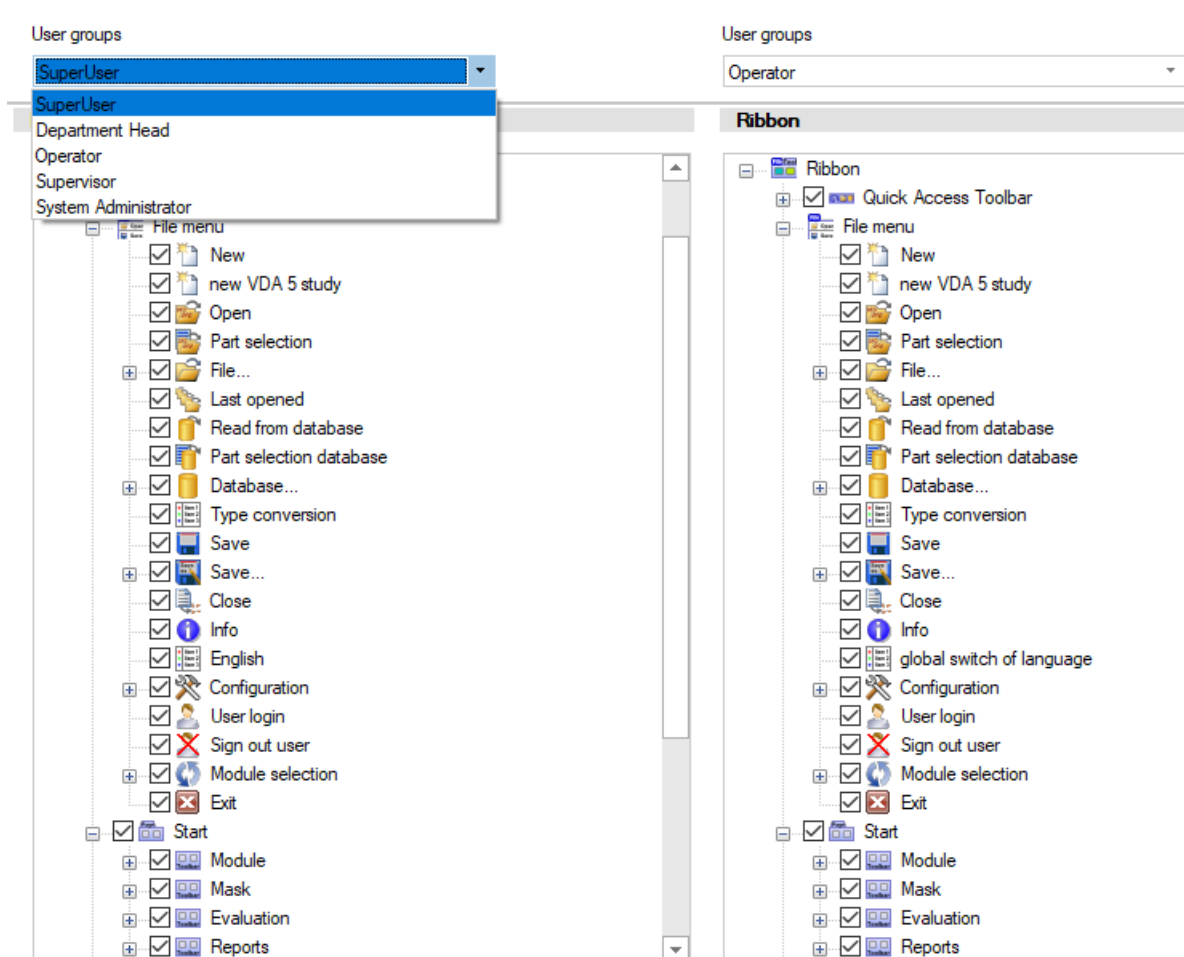
- View if the ribbons may be configured by user groups.



## 2 Comparison of Ribbon bars

Select *File | Configurations | compare ribbons* to be able to customise different user groups and compare the possible options.

### Setups...

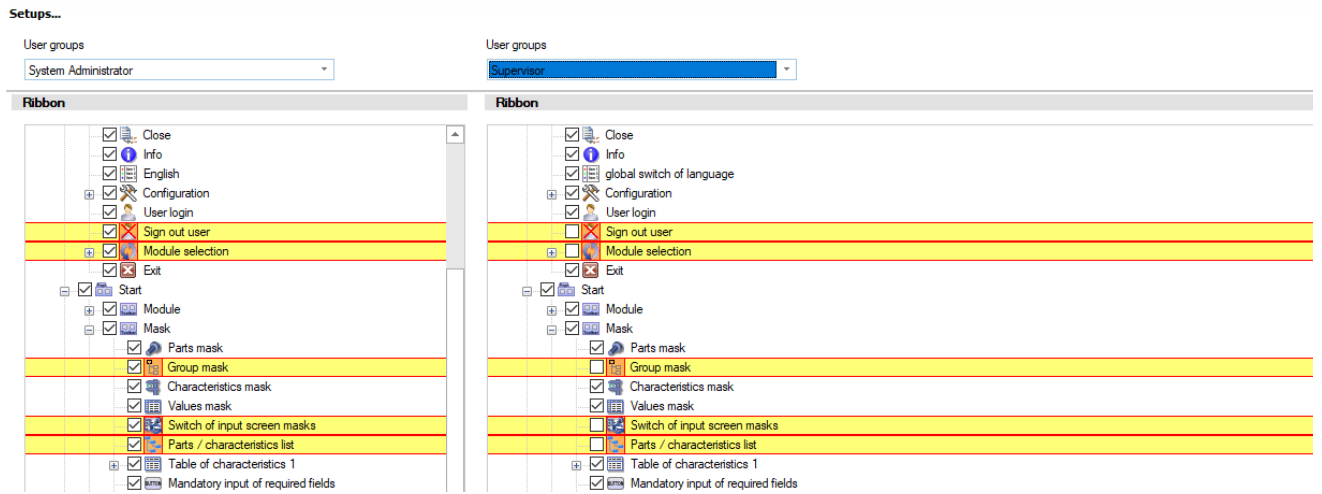


The screenshot shows the 'Setups...' dialog box with two columns for comparing ribbon bars. The left column is for the 'SuperUser' group, and the right column is for the 'Operator' group. Both columns show a tree view of ribbon options with checkboxes. A yellow bar highlights the 'global switch of language' option in the Operator group, indicating a difference from the SuperUser group.

User group	Options
SuperUser	<ul style="list-style-type: none"> <li>File menu               <ul style="list-style-type: none"> <li>New</li> <li>new VDA 5 study</li> <li>Open</li> <li>Part selection</li> <li>File...</li> <li>Last opened</li> <li>Read from database</li> <li>Part selection database</li> <li>Database...</li> <li>Type conversion</li> <li>Save</li> <li>Save...</li> <li>Close</li> <li>Info</li> <li>English</li> <li>Configuration</li> <li>User login</li> <li>Sign out user</li> <li>Module selection</li> <li>Exit</li> </ul> </li> <li>Start               <ul style="list-style-type: none"> <li>Module</li> <li>Mask</li> <li>Evaluation</li> <li>Reports</li> </ul> </li> </ul>
Operator	<ul style="list-style-type: none"> <li>File menu               <ul style="list-style-type: none"> <li>New</li> <li>new VDA 5 study</li> <li>Open</li> <li>Part selection</li> <li>File...</li> <li>Last opened</li> <li>Read from database</li> <li>Part selection database</li> <li>Database...</li> <li>Type conversion</li> <li>Save</li> <li>Save...</li> <li>Close</li> <li>Info</li> <li>global switch of language</li> <li>Configuration</li> <li>User login</li> <li>Sign out user</li> <li>Module selection</li> <li>Exit</li> </ul> </li> <li>Start               <ul style="list-style-type: none"> <li>Module</li> <li>Mask</li> <li>Evaluation</li> <li>Reports</li> </ul> </li> </ul>

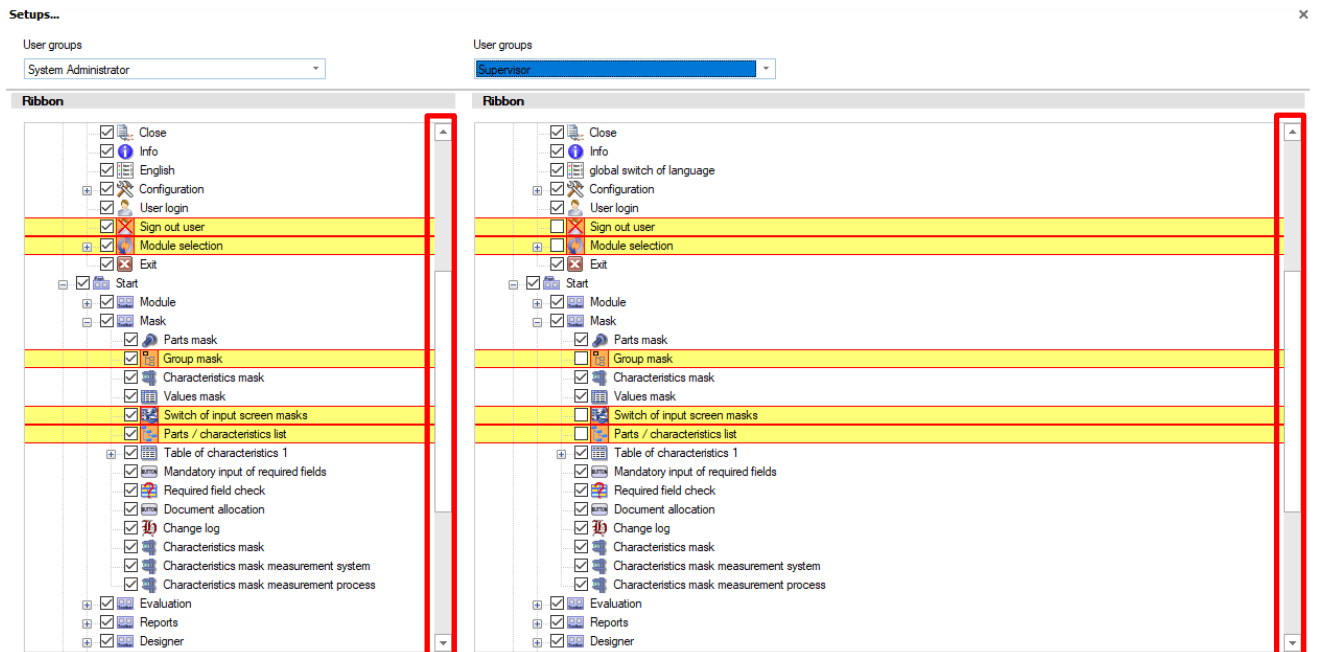
Differences in the set options are marked with a yellow bar.





As soon as the tree structure has been expanded, the scroll bar appears.

When trying to scroll with the mouse wheel, only one of the two windows is scrolled, but if you move the scroll bar, both windows are scrolled simultaneously.



Clicking on "OK" saves the changes made, and "Cancel" cancels the changes.

