



HEXAGON

Window - Menu

Explanations of the available options

FAQ
3 January 2022
Created with Version 13.0.5.2

Information about this document

All rights, including translation into foreign languages, are reserved. It is not allowed to reproduce any part of this document in any way without written permission of Hexagon.

Parts of this document may be automatically translated.

Document History

Version	Date	Author(s)	Modifications / Remarks
	28.12.2021	GA	Initial Release
	03-01-2022	GA	Translation

CONTENTS

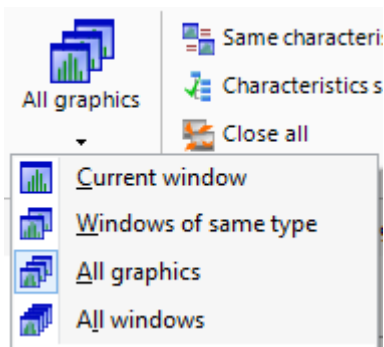
1	Foreword	4
2	Area	4
2.1	Current window.....	4
2.2	All windows.....	5
3	Characteristic selection	6
3.1	Same characteristics	6
3.2	Characteristic selection.....	6
3.2.1	Deactivate / activate characteristics.....	6
3.2.2	Switch view.....	6
3.3	Close all.....	8
4	Windows and window layout	8
4.1	Show windows.....	9
4.2	Save window layout.....	9
4.3	Restore window layout.....	9
4.4	Save window layout for data set	10
4.5	Reset saved window layout (for data set)	10
5	Window display	11
6	Copy options	11
6.1	Copy	11
6.2	Copy content	11
7	Print options	12
7.1	Print current window	12
7.2	Print Standard Report	13
7.3	News / All windows PDF →	13

1 Foreword

This documentation is intended to briefly explain how to work with the Window menu. Regardless of the tabs, the documentation is divided into the corresponding sections.

2 Area

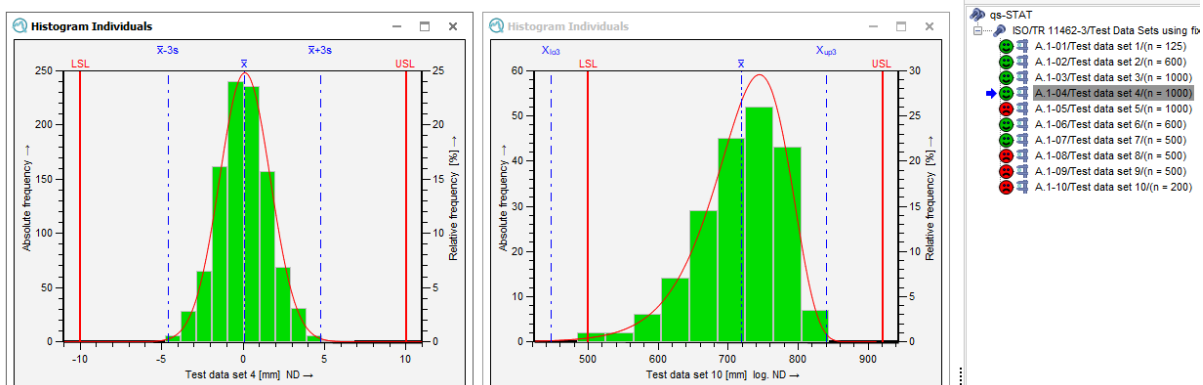
Under "Area" you can define whether an "Action" should affect all open graphics or only the active graphic.



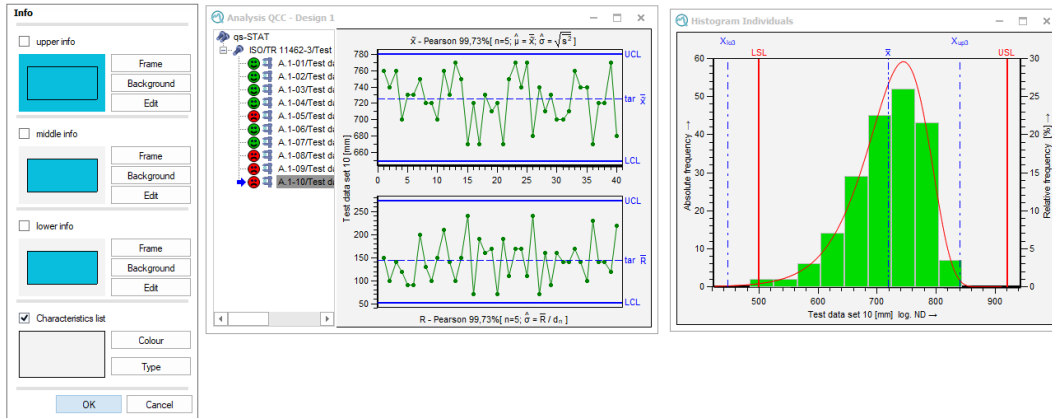
Only the options "Current window" and "All windows" are explained here; the other two options were developed in special customer projects. It is recommended to deactivate them in the ribbon configuration.

2.1 Current window

If the software is set to "current window", every action, for example a change of characteristic, applies exclusively to the current, active graphic. This means that, for example, the same graphic can be displayed for different characteristics:



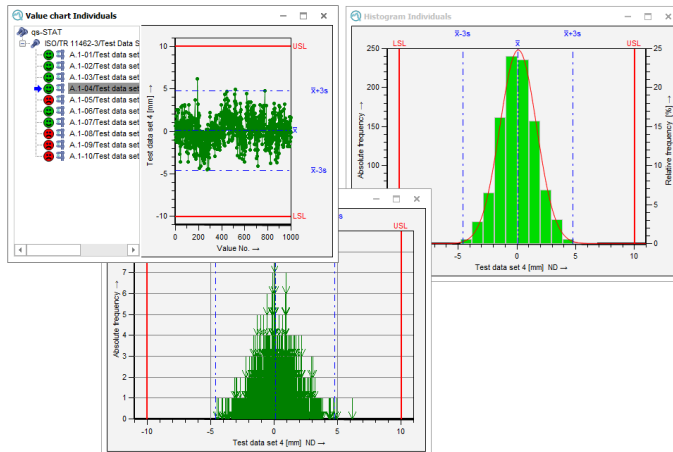
But graphics configurations are also carried out exclusively for the current graphics.



This option is therefore mainly recommended when graphics are to be configured. Depending on the configuration, a large part of the changes made would otherwise be transferred directly to all graphics.

2.2 All windows

If the option "All windows" is active, actions such as selecting a characteristic are carried out directly on all graphics. The same applies to most of the graphic settings.



This option is therefore mainly recommended when characteristics are to be assessed across diverse graphics.

3 Characteristic selection

3.1 Same characteristics

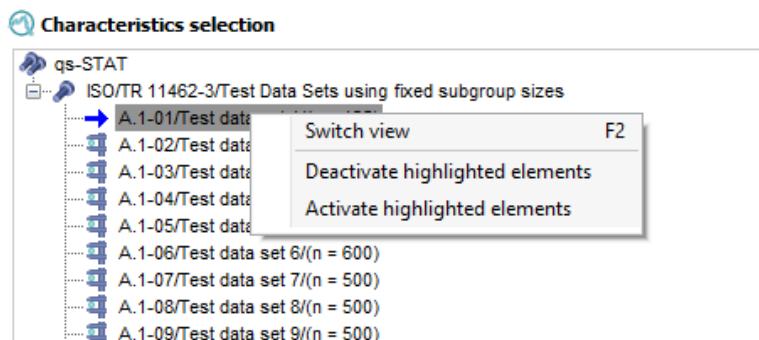
The option "same characteristics" must only be used if the setting "current window" has been selected in "area".

If the option "same characteristics" is activated, all opened graphics are set to the same characteristic as the active graphic.

3.2 Characteristic selection

Selecting a characteristic opens a graphic similar to the parts/characteristics list for selecting a characteristic. Depending on the setting under "Range", only the current graphic or all graphics are then set to the selected characteristic confirmed with OK.

In addition, the feature selection has the following functions, which can be selected with the right mouse button:

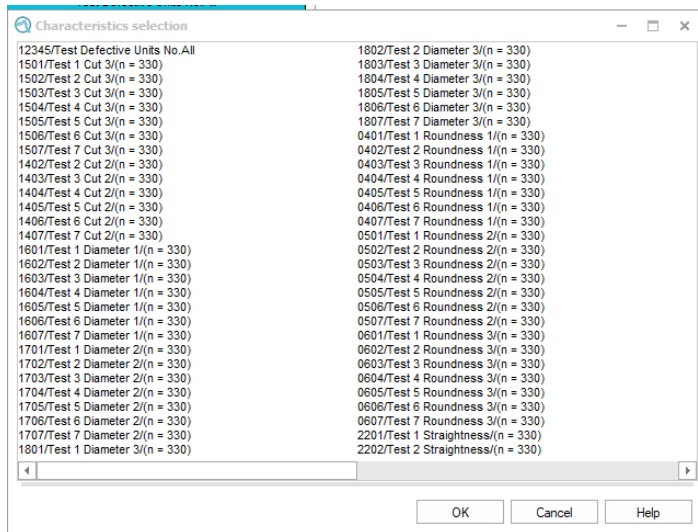


3.2.1 Deactivate / activate characteristics

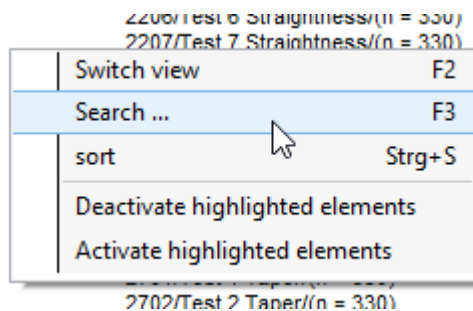
With this, characteristics can be activated / deactivated as in the parts / characteristics list.

3.2.2 Switch view

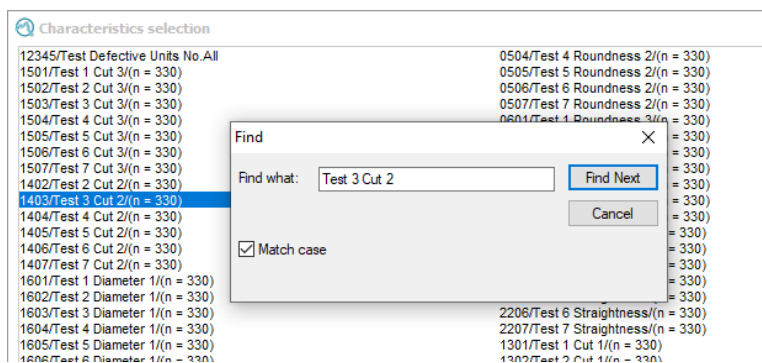
If the option "Switch view" is activated, an extended list of characteristics is available, which is particularly useful for a large number of characteristics:



The characteristics are displayed in a continuous list form. With the right mouse button, the options for searching and sorting the characteristics are now available.



In the search for characteristics, a "starts with xxx" is used to search for a specific characteristic when there are a large number of characteristics



After confirmation, the views are aligned to the selected characteristic.

"Sort" sorts the characteristics according to the displayed K-fields.

It should be noted here that the K-fields displayed are taken from the configuration of the parts characteristics list.

3.3 Close all

This option closes all open windows and graphics.

4 Windows and window layout

The "window layout" is the arrangement of graphics that is opened when a new data set is opened. The following must be observed:

- In the evaluating products qs-STAT and solara.MP, there is one window layout per "characteristic type"
- The first characteristic of the data set defines the layout to be opened.

The different feature types in qs-STAT are

- Variable characteristics (including positional tolerances)
- Attributive characteristics (including ordinal / nominal characteristics)

The different feature types in solara.MP are mainly:

- Procedure 1
- Procedure 2
- Procedure 3
- Linearity
- Stability
- VDA5

A change of the "start windows" should therefore always be done with consideration of the different feature types.

4.1 Show windows

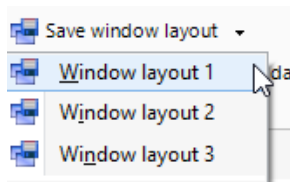
This only displays a list of the opened graphics.

4.2 Save window layout

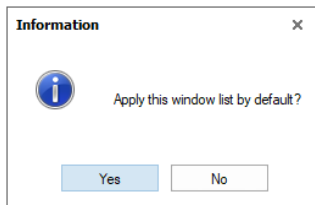
This explanation of this option applies to the evaluating products qs-STAT and solara.MP. In O-QIS, there are other options per module, related to the tasks of the respective module.

"Save window layout" saves the arrangement, position and size of the opened graphics for this feature type as "start graphics" in the respective module.

There are 3 "window layouts" available:



If a window layout is to be saved that is not the current standard, you will be asked whether this layout should be the new standard or only saved as a secondary layout:

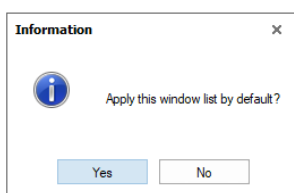


The option to set a layout other than number 1 as the default was created purely for training purposes in order to quickly display other views in training sessions. In productive operation with the software, this has hardly any significance.

4.3 Restore window layout

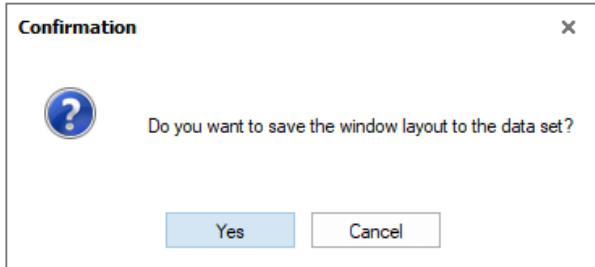
If several window layouts have been saved, they can be recalled with "Restore window layout".

If a window layout is called up that is not the current standard, a query appears asking whether this should now be the standard. If you select "No", only the saved layout is restored.



4.4 Save window layout for data set

If a data set in a module is to have its own window layout, this can be saved here. A security query appears asking whether this is really desired:



From then on, this data set no longer follows the standard layout, but only uses its own layout, the graphics list saved for it.



In general, the option to save one layout per data set should be avoided. Especially in the evaluation products qs-STAT and solara.MP, this option also has a pure "training character" in order to show prepared views of a prepared data set in training courses and presentations.



In contrast to "Save window layout", this option does not follow configuration management. If a layout is saved in a module for a data set, this applies to all users!



When working with *.dfq files, the window layout for the data set is saved in an *.INI file of the same name next to the *.dfq file. When working with the database, this is saved in a separate database table.

4.5 Reset saved window layout (for data set)

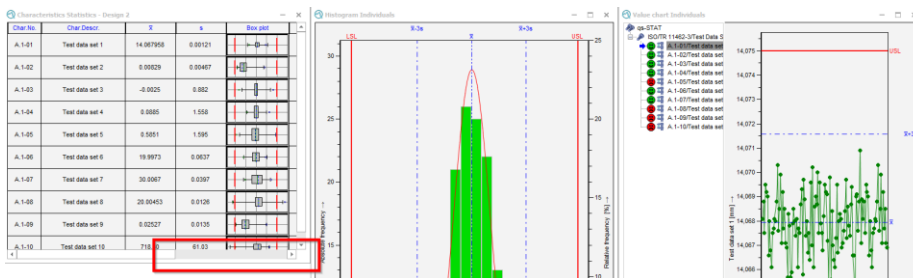
This option only appears when a data set is opened that has its own window layout. When the option is activated, the window layout of the current module for the data set is deleted. Any window layouts in other modules remain.

5 Window display

With the options side by side/underneath each other/overlapping, the opened windows can be arranged automatically.



Especially in the case of graphs that have a defined size and cannot be simply resized like, for example, a value chart, this can lead to a distortion of the representation, as can be seen below in the example of "Characteristics".



6 Copy options

There are 2 copy options available.

6.1 Copy

This option copies the graphic as an image to the clipboard for pasting into e.g. Word or PowerPoint.

6.2 Copy content

In the case of table graphics such as characteristic values - characteristics, the option "Copy content as CSV" is available. Together with the option "Copy headings as well", the heading is also copied to the clipboard as a csv.

The following should be noted:

- This option is not intended for continuous use.
- Individual characteristics graphics included in table graphics are not copied.
- Special formatting such as subscript (C_p) or accents (\bar{x}) are transmitted coded in csv.



If such an option is needed in continuous use, it should be switched to result export, or this should be done by data aggregation for the long term analysis module. Depending on the requirements, the various options can be discussed and set up in a workshop for which a fee is charged.

7 Print options

The following additional print options are available:

7.1 Print current window

The option "Print current window" takes over the current view of the active graphic and prints it (without further specification) sheet-filling without header data directly on the standard printer.

If a newer installation since version 11 was used, templates are defined directly in the paths, depending on whether it is a single-characteristic graphic or a partial graphic.

Print current window	
Report file for part graphic	<input type="text" value="\\DEWEI-LT-00055\Q-DAS\Shares\PLANT\DEFAULT\REPORTS\ALL_PART.DEF"/> ...
Report file for characteristics graphic	<input type="text" value="\\DEWEI-LT-00055\Q-DAS\Shares\PLANT\DEFAULT\REPORTS\ALL_CHAR.DEF"/> ...

If these report templates are included and exist, the option "Print current window" prints this with header and footer on the stand wheel printer.

In the drop-down menu, further templates are available to differentiate between portrait and landscape format for parts or feature graphics. These printouts are also sent directly to the standard printer.

Print current window ▾ All windows → PDF ▾

- Print current graphic with characteristic header
- Print current graphic with characteristic header (landscape)
- Print current graphic with part header
- Print current graphic with part header (landscape)

Only report templates that have been defined with the form designer as "Frame for "Print current window"" are listed here.

Form sheet features

Description	Modules	Intended use	Note	Password
Intended use				
<input type="radio"/>		Standard report		
<input checked="" type="radio"/>		Frame for "Print current window" or for the printout of a table view (i.e. change history)		

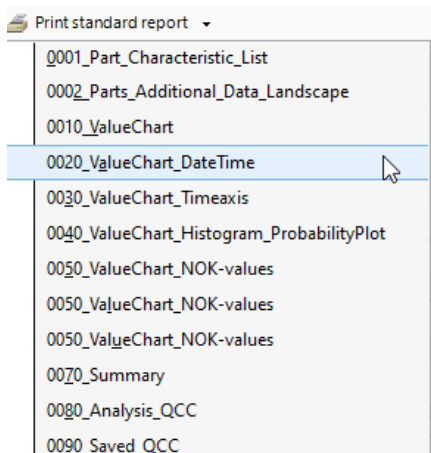


In the case of list graphics capable of consecutive pages, such as characteristics, NO consecutive pages are printed. The characteristics that are currently in the view are transferred as graphics for the report.

If required, the form designer (optional extra) can be used to create your own reports.

7.2 Print Standard Report

All reports that are defined as classic reports for this module are available here.



One recommendation is to no longer use this outdated option, but to work under the "Start" tab with the report views and print options there.

7.3 News / All windows PDF →

In contrast to "Print current window", printing with the internal PDF printer is available here. If the option "All windows →PDF" is used, one page per graphic is created in a PDF. A request is made for the storage space for the PDF.